



**Rotary Mower, Snowcaster
& Snow Blade, For 107
& 117 Compact Tractors
Parts Catalog**

69 + 70

casecoltingersoll.com



Here's your set of
Revision Pages to
keep your Parts Dept.
Up-To-Date!

Parts Catalog No. 1157

For G41 Mower, Etc.
For 107 and 117
Compact Tractors

Revision No. 1

To Pages:

3 - 4
5 - 6
7 - 8

casecoltingersoll.com

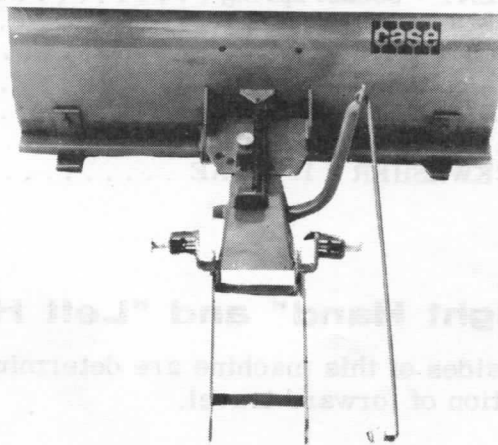
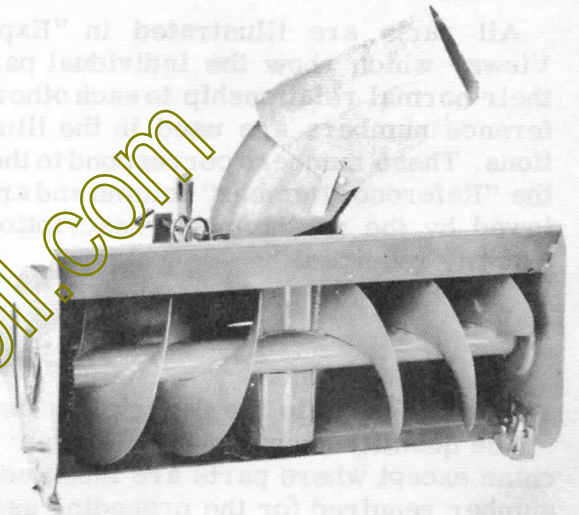
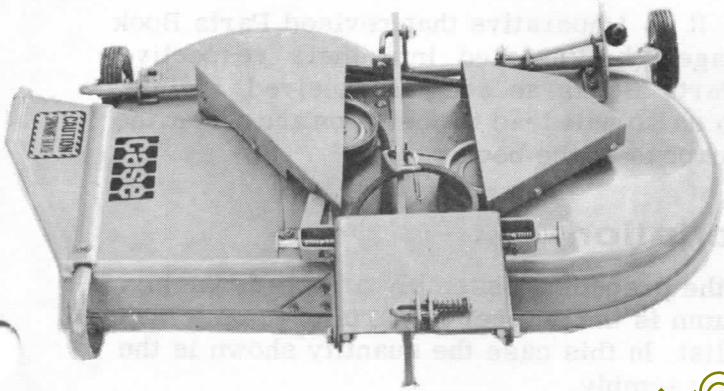
Insert the attached revised pages in your copy of the
above Catalog.

This Catalog has been printed in loose leaf style to
allow your Parts Department to keep their Catalogs
current and up-to-date. Insert these pages promptly
in their proper places. Remove and destroy the pages
they replace.

Issue Date October 1971
Print Shop 1500

MODEL G 41, G 51 AND G 81 ROTARY MOWER, SNOWBLADE AND SNOWCASTER

Parts Catalog No. 1157



casecollectorsoll.com

PRICE 75 CENTS

Indexes

This Parts Catalog is arranged for easy identification of Genuine CASE Service Parts. An alphabetical index is provided at the front of this Catalog to locate the major groups or assemblies. A numerical index at the rear of the Catalog gives the part numbers and the pages on which they are described.

Illustrations

All parts are illustrated in "Exploded Views" which show the individual parts in their normal relationship to each other. Reference numbers are used in the illustrations. These numbers correspond to those in the "Reference Number" column and are followed by the part number, description and quantity required.

Orders

Orders should plainly specify correct part number, full description, quantity required, machine model and engine model, machine and engine serial numbers, method of shipment and shipping address.

Changes

When changes to the machine make it necessary, revised pages for this book will be issued. The revised pages will be issued with the same page number as those they replace and the "issue" number and date will be advanced.

It is imperative that revised Parts Book pages be inserted into their respective Parts Books as soon as received. Failure to do so will lead to confusion and defeat the purpose of the book.

Indented Description

Indented parts in the descriptive list are a part of the preceding assembly or sub-assembly. The quantity shown in the "Number Required" column is the number of parts used on a machine except where parts are indented in descriptive list. In this case the quantity shown is the number required for the preceding assembly or sub-assembly.

REF.	PART NO.	DESCRIPTION	REQ'D
	A 55159	CYLINDER ASSY - rear steering	1
28	A 56208	SOCKET ASSY - rear cylinder	1
29	A 55956	PLUG - adjusting, socket assy	1
30	A 55957	SEAT - socket ball	2
31	A 56210	SPRING - socket	1
32	A 56209	SEAT - socket spring	1
33	G 45175	CLAMP ASSY - socket assy	1
	16- 836	BOLT - 1/2" x 2-1/4" N.F.hex.	1
34	132- 104	PIN - cotter, 3/16" x 3"	1
35	A 55889	STUD - ball,socket & cylinder	2
36	13- 410	BOLT - 1/4" x 5/8" N.C.,hex.	4
37	92- 4	LOCKWASHER - 1/4" SAE	4

Terms "Right Hand" and "Left Hand"

"Right Hand" and "Left Hand" sides of this machine are determined by standing at the rear of the unit and facing in the direction of forward travel.

ALPHABETICAL INDEX

MOWER SECTION

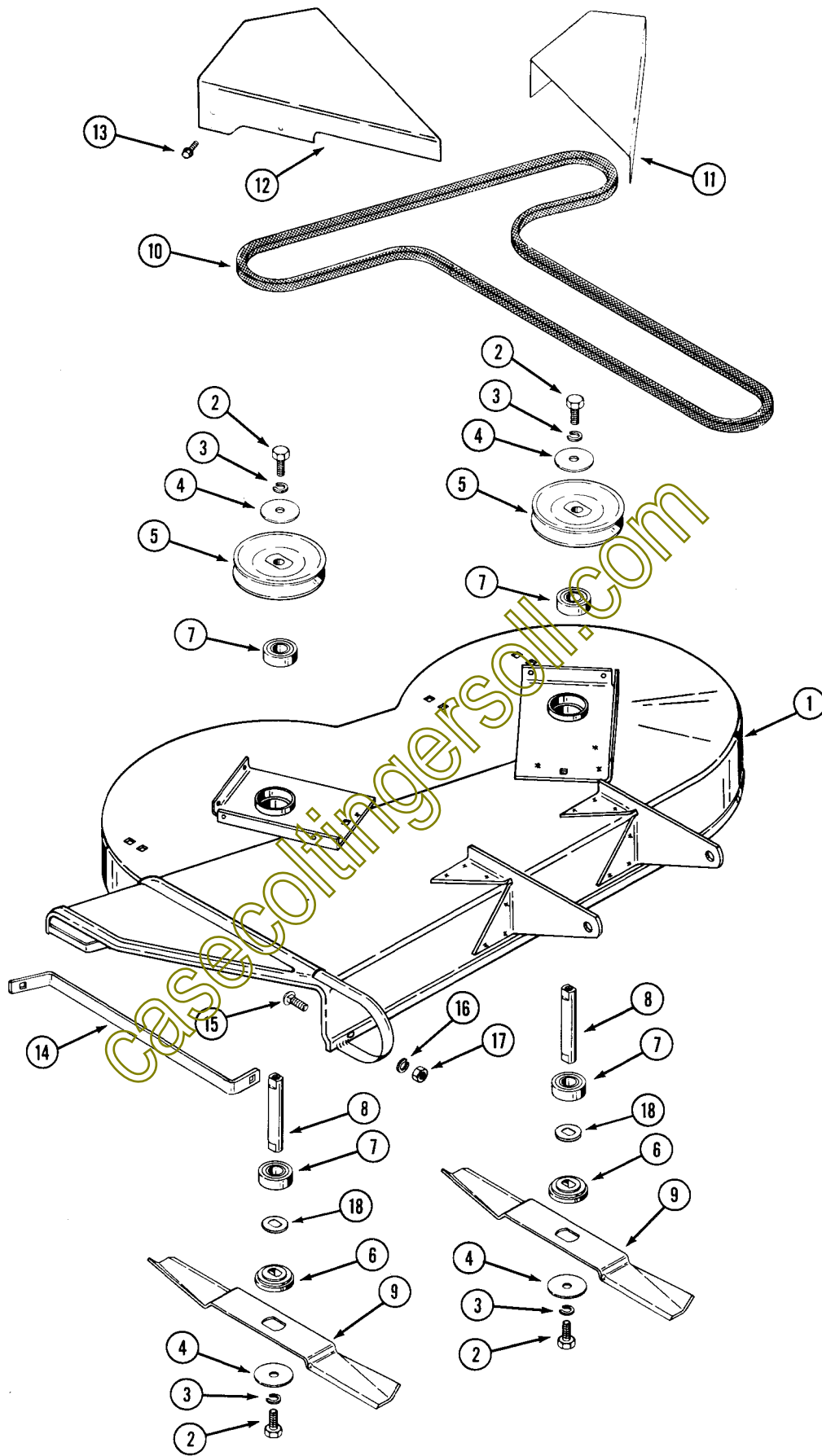
	Page
Belt, Drive	5
Blades	5
Deck	5
Guards	5
Lift Assembly	7
Pulleys	5-7
Spindles	5

SNOW CASTER SECTION

	Page
Auger Assembly	11
Belt	9
Chute Control	11
Drive Assembly	9
Lift Assembly	9

SNOW BLADE SECTION

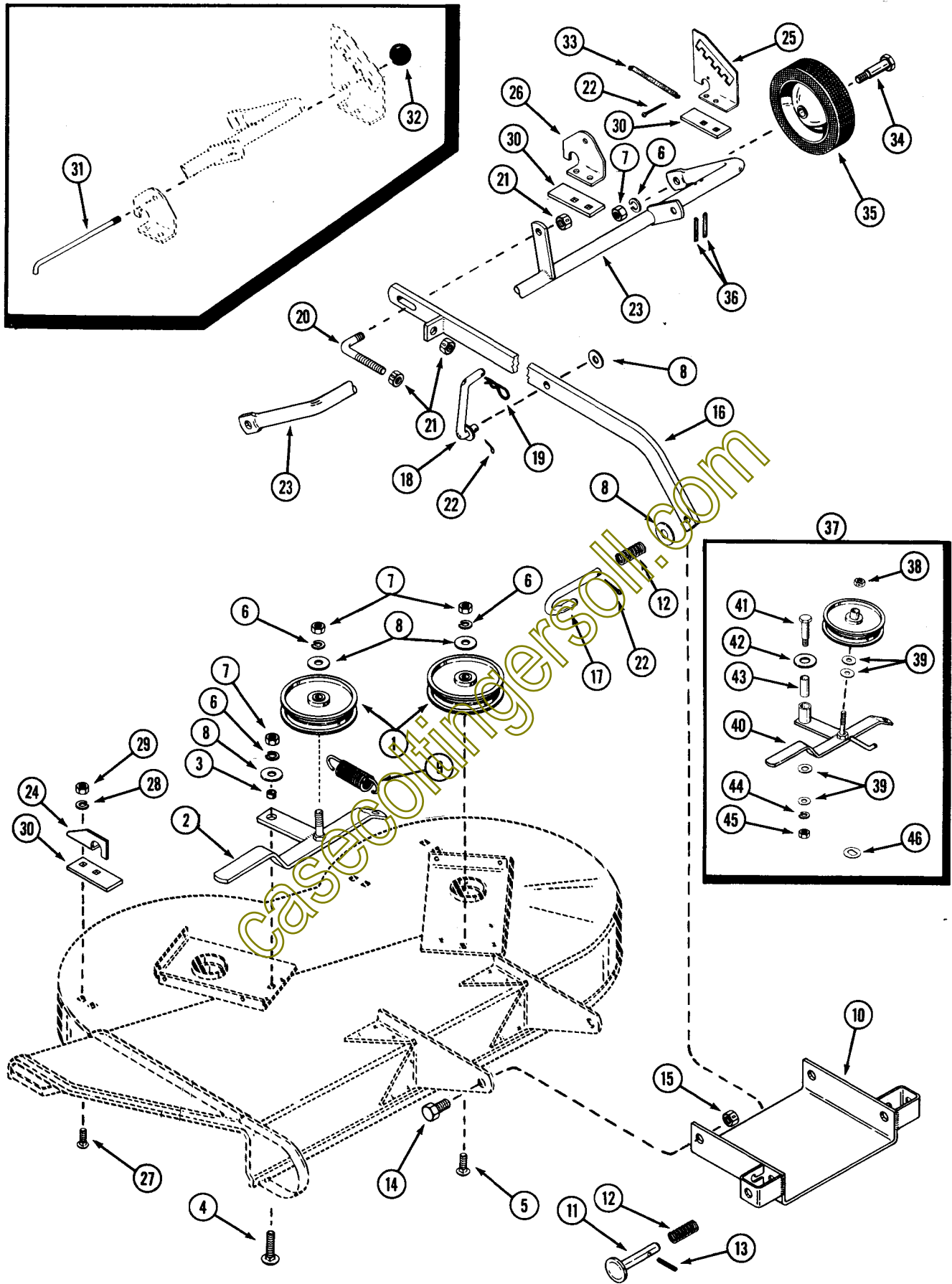
	Page
Blade	13
Edge Cutting	13
Lift Assembly	13
Skids	13



DECK, BELT AND SPINDLE ASSEMBLY

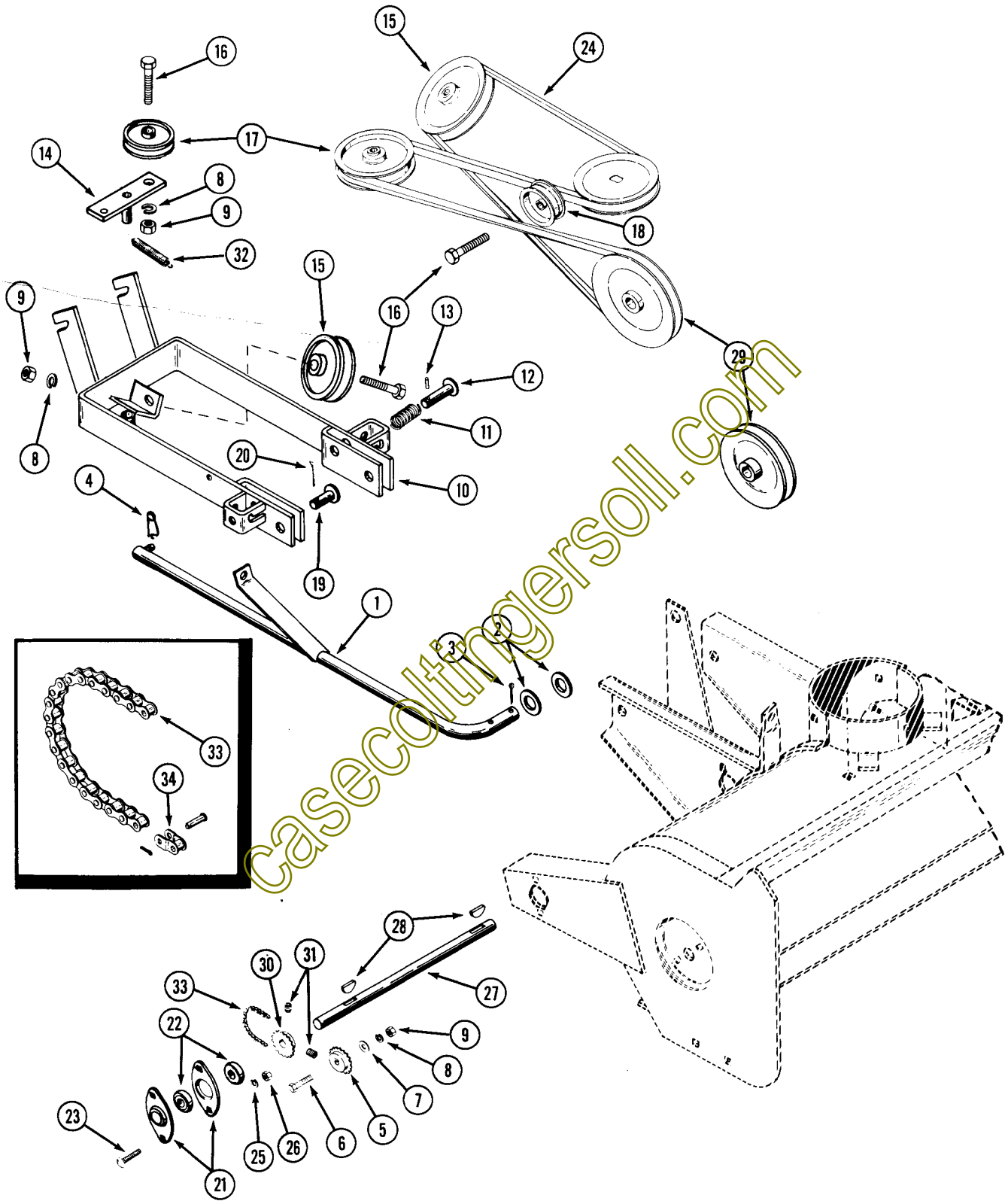
REF. PART NO.	DESCRIPTION	REQ'D
1 C 18135	DECK - mower 34"	1
2 113- 207	BOLT - 3/8" x 1" NC hex	4
3 192- 6	LOCKWASHER - 7/16" ZP	4
4 195- 2037	WASHER - plain 13/32"	4
5 C 15936	PULLEY - spindle	2
6 C 16241	ADAPTER - spindle	4
7 A 70280	BEARING - spindle	4
8 C 15339	SPINDLE - mower	2
9 C 15340	BLADE- mower 17-1/4"	2
10 C 15411	BELT - mower drive	1
11 C 15366	GUARD - pulley L.H.	1
12 C 15367	GUARD - pulley R.H.	1
13 187- 1036	SCREW - 1/4" x 1/2" NC hex head, self-tapping	8
14 C 15625	BAR - mower chute	1
15 111- 215	BOLT - 5/16" x 3/4" NC round head, square neck, ZP	2
16 192- 20	LOCKWASHER - 5/16" ZP	2
17 129- 102	NUT - 5/16" NC hex, ZP	2
18 C 16719	WASHER - mower spindle	2
A 70404	DECAL - "CAUTION"	2
C 12664	DECAL - height indicator	1
C 15678	DECAL - OPEI safety	1
321- 1571	DECAL - "CASE"	1

casecoltingersoil.com



AXLE, IDLER PULLEYS AND LIFT ASSEMBLY

REF.	PART NO.	DESCRIPTION	REQ'D
1	C 15343	PULLEY - idler	2
2	C 15384	ARM - idler	1
3	C 14768	SPACER	1
4	111- 362	BOLT - 3/8" x 1" NC round head, square neck, ZP	1
5	111- 330	BOLT - 3/8" x 1-3/4" NC round head, square neck, ZP	1
6	192- 21	LOCKWASHER - 3/8" ZP	5
7	129- 103	NUT - 3/8" NC hex, ZP	5
8	195- 522	WASHER - 3/8" ZP	5
9	C 15677	SPRING - idler arm	1
10	C 15361	BRACKET - lift	1
11	C 15278	PIN - latch	2
12	C 15280	SPRING - latch	3
13	138- 98	PIN - roll 3/16" x 1-1/4"	2
14	113- 424	BOLT - 1/2" x 1" NC hex, ZP	2
15	131- 165	NUT - lock 1/2" NC hex, ZP	2
16	C 15674	ARM - leveling	1
17	C 15651	LINK - latching	1
18	C 15661	LINK - lift	1
19	A 70176	PIN - safety	1
20	C 15355	"L" BOLT - adjust	1
21	131- 178	NUT - lock 3/8" NC hex	3
22	132- 46	PIN - cotter 1/8" x 3/4"	3
23	C 15358	AXLE - mower	1
24	C 15351	BRACKET - axle mounting	1
25	C 15350	BRACKET - height adjust	1
26	C 15666	BRACKET - axle mounting	1
27	111- 203	BOLT - 5/16" x 1" NC round head, square neck, ZP	6
28	192- 20	LOCKWASHER - 5/16" ZP	6
29	129- 102	NUT - 5/16" NC hex, ZP	6
30	C 15352	SPACER - axle	3
31	C 15663	ROD - height adjust	1
32	C 15618	KNOB - adjust	1
33	C 15676	SPRING - adjust rod	1
34	C 15412	STUD - wheel gauge	2
35	C 15413	WHEEL - mower gauge	2
36	138- 92	PIN - roll 3/16" x 3/4"	2
37	C 16768	KIT - improvement (used prior to S/N E11984)	1
38	131- 178	LOCKNUT - 3/8" NC hex	1
39	195- 103	WASHER - 3/8"	4
40	C 16761	BRACKET - idler	1
41	C 16745	SHOULDER BOLT - 3/8"	1
42	195- 533	WASHER - 1/2"	1
43	C 16714	BUSHING - bronze	1
44	192- 21	LOCKWASHER - 3/8"	1
45	129- 103	NUT - 3/8" NC hex	1
46	C 16719	WASHER - mower spindle	2

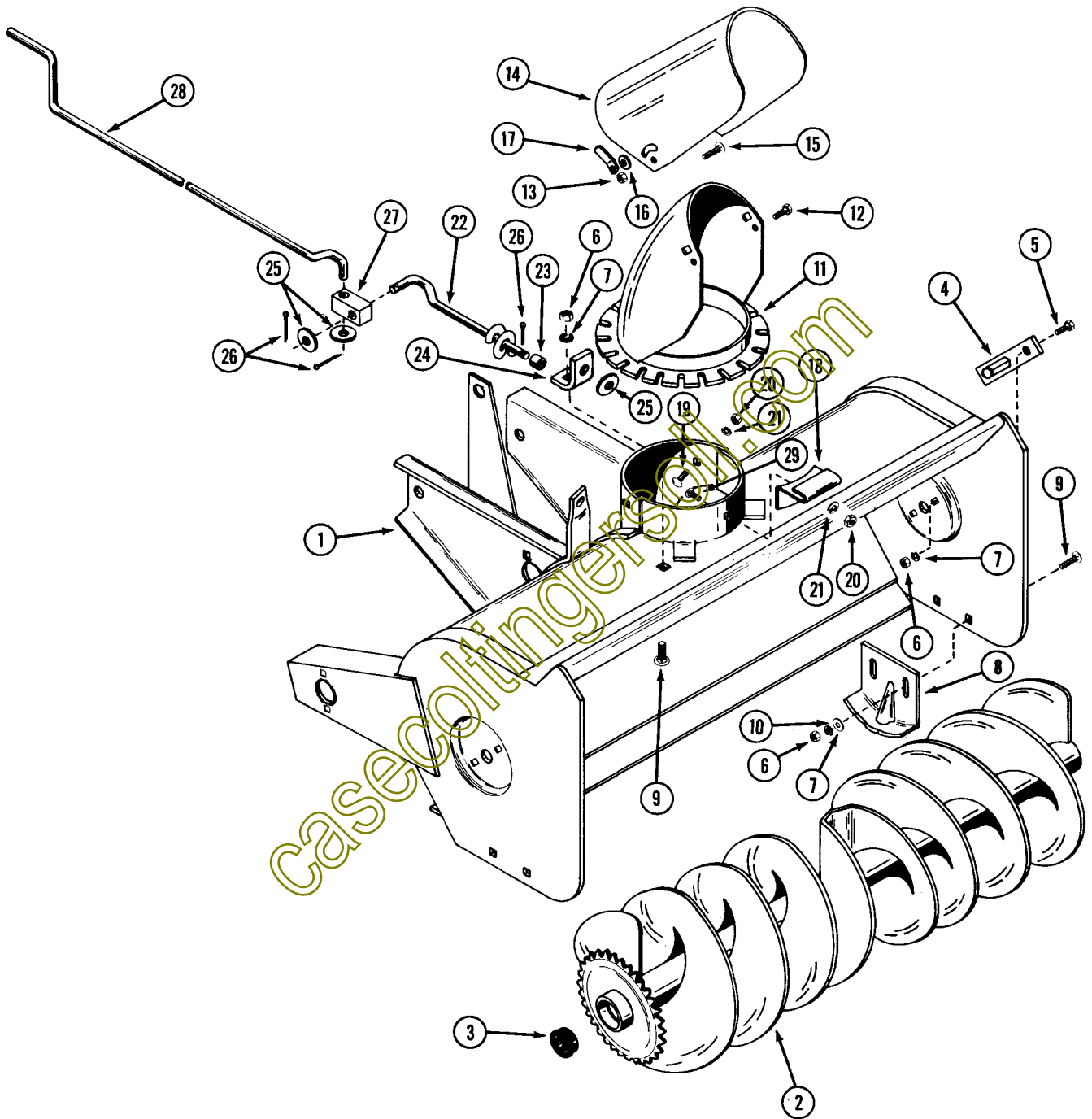


CASE MODEL G 81 SNOWCASTER

MOUNTING COMPONENTS AND

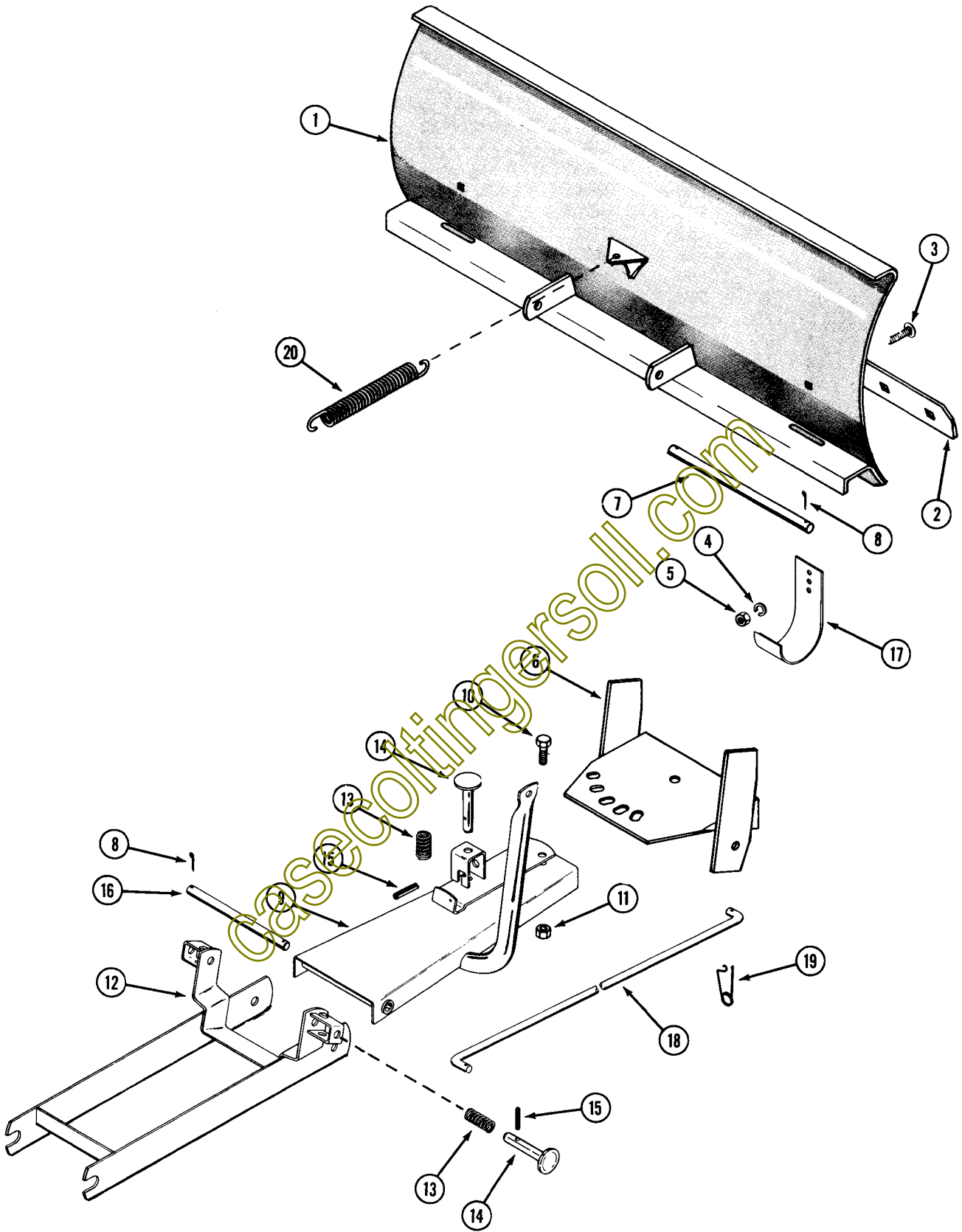
DRIVE ASSEMBLY

REF.	PART NO.	DESCRIPTION	REQ'D
1	C 15375	ROD - lift	1
2	195- 549	WASHER - 7/8" ZP	2
3	132- 306	PIN - cotter 3/16" x 1-3/4"	2
4	C 10898	PIN - safety	1
5	C 15775	SPROCKET - idler	1
6	113- 209	BOLT - 3/8" x 1-1/2" NC hex, ZP	1
7	195- 104	WASHER - 3/8" ZP	4
8	192- 21	LOCKWASHER - 3/8" ZP	4
9	129- 103	NUT - 3/8" NC hex, ZP	4
10	C 15288	BRACKET - mounting	1
11	C 15280	SPRING	2
12	C 15278	PIN - latch	2
13	138- 98	PIN - roll 3/16" x 1-1/4"	2
14	C 15296	ARM - idler	1
15	C 15329	PULLEY - idler 6"	1
16	113- 219	BOLT - 3/8" x 2" NC hex	3
17	C 15343	PULLEY - idler 4-1/2"	1
18	C 15672	PULLEY - idler 2-1/2"	1
19	A 12122	PIN - clevis 1/2"	2
20	132- 310	PIN - cotter 1/8" x 1-1/4"	2
21	C 15386	FLANGETTE	4
22	C 15385	BEARING - includes collar and setscrew	2
23	111- 108	BOLT - 1/4" x 3/4" NC round head, square neck	4
24	C 15337	BELT - drive	1
25	192- 19	LOCKWASHER - 1/4" ZP	4
26	129- 101	NUT - 1/4" NC hex, ZP	4
27	C 15331	SHAFT - drive	1
28	126- 16	KEY - 3/16" x 3/4"	2
29	C 15293	PULLEY - 6"	1
30	C 15330	SPROCKET - 18T (includes setscrew)	1
31	83- 44	SETScrew - 1/4" x 1/4" NC socket head	2
32	C 15671	SPRING - idler arm	1
33		CHAIN - auger drive, 93 pitches, #35 roller chain USE:	1
		1 - B17095 chain, 50 links #35	
		3 - B17096 chain, 10 links #35	
		2 - B17097 chain, 6 links #35	
		1 - T16500 offset link #35	
	B 17095	CHAIN - 50 links, #35 roller chain	1
	B 17096	CHAIN - 10 links, #35 roller chain	3
	B 17097	CHAIN - 6 links, #35 roller chain	2
34	T 16500	LINK - offset, #35 roller chain	1
	321- 1571	DECAL - "CASE"	1
	C 12296	DECAL - "CAUTION"	1



AUGER AND CHUTE ASSEMBLY

REF.	PART NO.	DESCRIPTION	REQ'D
1	C 15305	HOUSING - auger 32"	1
2	C 15297	AUGER	1
3	C 14421	BEARING - auger	2
4	C 15186	SHAFT - stub, auger mounting	2
5	113- 205	BOLT - 3/8" x 5/8" NC hex, ZP	4
6	129- 103	NUT - 3/8" NC hex, ZP	9
7	192- 21	LOCKWASHER - 3/8" ZP	9
8	C 15190	SKID	2
9	111- 302	BOLT - 3/8" x 3/4" NC round head, square neck	5
10	195- 104	WASHER - 7/16" ZP	4
11	C 15248	CHUTE	1
12	13- 48	BOLT - 1/4" x 1/2" NC hex	2
13	131- 1102	NUT - lock 1/4"	2
14	C 14597	DEFLECTOR	1
15	111- 340	BOLT - 3/8" x 3/4" NC round head short, square neck	2
16	D 33544	WASHER - 25/64" dished	2
17	C 14569	LEVER - locking, deflector	1
18	C 15334	BRACKET - chute hold down	3
19	111- 202	BOLT - 5/16" x 3/4" NC round head, square neck	3
20	129- 102	NUT - 5/16" NC hex, ZP	3
21	192- 20	LOCKWASHER - 5/16" ZP	3
22	C 15244	ROD - chute control	1
23	C 15277	SPACER - rod, chute control	1
24	C 15240	BRACKET - control rod	1
25	195- 525	WASHER - 3/8" ZP	3
26	132- 320	PIN - cotter, 3/32" x 3/4"	3
27	C 14583	JOINT - block	1
28	C 15371	CRANK - chute control	1
29	164- 450	SCREW - 5/16" x 3/4" NC button head socket	1



SNOW BLADE

REF.	PART NO.	DESCRIPTION	REQ'D
1	C 15461	BLADE ASSEMBLY - 38" 107 and 117	1
2	C 15462	EDGE - cutting	1
3	11- 516	BOLT - 5/16" x 1" NC round head, square neck	.10
4	92- 5	LOCKWASHER - 5/16"	.10
5	25- 105	NUT - 5/16" NC hex	.10
6	C 15494	PIVOT - blade	1
7	C 15495	PIN - blade pivot	1
8	132- 48	PIN - cotter 1/8" x 1"	4
9	C 15471	BRACKET - push	1
10	113- 417	BOLT - 1/2" x 1-1/4" NC hex	1
11	131- 165	NUT - 1/2" NC hex	1
12	C 15463	BRACKET - mounting	1
13	C 15280	SPRING - compression	3
14	C 15278	PIN - latch	3
15	138- 98	PIN - roll 3/16" x 1-1/4"	3
16	C 15496	PIN - bracket pivot	1
17	C 15469	SHOE - skid	2
18	C 15497	ROD - lift	1
19	C 10898	PIN - safety	2
20	R 15380	SPRING - blade extension	1
	321- 1571	DECAL - "CASE"	1

casecoltingersoil.com

NUMERICAL INDEX

PART NO.	PAGE NO.	REF. NO.	PART NO.	PAGE NO.	REF. NO.	PART NO.	PAGE NO.	REF. NO.		
A	12122	9	19	C	15461	13	1	132- 48	13	8
A	70280	5	7	C	15462	13	2	132- 306	9	3
A	70404	5		C	15463	13	12	132- 310	9	20
B	17095	9		C	15471	13	9	132- 320	11	26
B	17096	9		C	15469	13	17	138- 92	7	36
B	17097	9		C	15494	13	6	138- 98	7	13
C	10898	7	19	C	15495	13	7	138- 98	9	13
C	10898	9	4	C	15496	13	16	138- 98	13	15
C	10898	13	19	C	15497	13	18	164- 450	11	29
C	12296	9		C	15618	7	32	187- 1036	5	13
C	12664	5		C	15625	5	14	192- 19	9	25
C	14421	11	3	C	15651	7	17	192- 20	5	16
C	14569	11	17	C	15661	7	18	192- 20	7	28
C	14583	11	27	C	15663	7	31	192- 20	11	21
C	14597	11	14	C	15666	7	26	192- 21	5	3
C	14768	7	3	C	15671	9	32	192- 21	7	6
C	15186	11	4	C	15672	9	18	192- 21	9	8
C	15190	11	8	C	15674	7	16	192- 21	11	7
C	15240	11	24	C	15676	7	33	195- 104	9	7
C	15244	11	22	C	15677	7	9	195- 104	11	10
C	15248	11	11	C	15678	5		195- 522	7	8
C	15277	11	23	C	15775	9	5	195- 525	11	25
C	15278	7	11	C	15936	5	5	195- 549	9	2
C	15278	9	12	D	33544	11	16	195- 2036	5	4
C	15278	13	14	R	15380	13	20	321- 1571	5	
C	15280	7	12	T	16500	9	34	321- 1571	9	
C	15280	9	11					321- 1571	13	
C	15280	9	11							
C	15280	13	13	HARDWARE CODE NUMBERS						
C	15288	9	10	11-	516	13	3			
C	15293	9	29	13-	48	11	12			
C	15296	9	14	25-	105	13	5			
C	15297	11	2	83-	44	9	31			
C	15305	11	1	92-	5	13	4			
C	15329	9	15	111-	108	9	23			
C	15330	9	30	111-	202	11	19			
C	15331	9	27	111-	203	7	27			
C	15334	11	18	111-	215	5	15			
C	15337	9	24	111-	302	11	9			
C	15339	5	8	111-	314	7	5			
C	15340	5	9	111-	340	11	15			
C	15341	5	6	111-	362	7	4			
C	15343	7	1	113-	205	11	5			
C	15343	9	17	113-	207	5	2			
C	15350	7	25	113-	209	9	6			
C	15351	7	24	113-	219	9	16			
C	15352	7	30	113-	417	13	10			
C	15355	7	20	113-	424	7	14			
C	15358	7	23	126-	16	9	28			
C	15361	7	10	129-	101	9	26			
C	15366	5	11	129-	102	5	17			
C	15367	5	12	129-	102	7	29			
C	15368	5	1	129-	102	11	20			
C	15371	11	28	129-	103	7	7			
C	15375	9	1	129-	103	9	9			
C	15384	7	2	129-	103	11	6			
C	15385	9	22	131-	165	7	15			
C	15386	9	21	131-	165	13	11			
C	15411	5	10	131-	178	7	21			
C	15412	7	34	131-	1102	11	13			
C	15413	7	35	132-	46	7	22			

casecollectingersoll.com