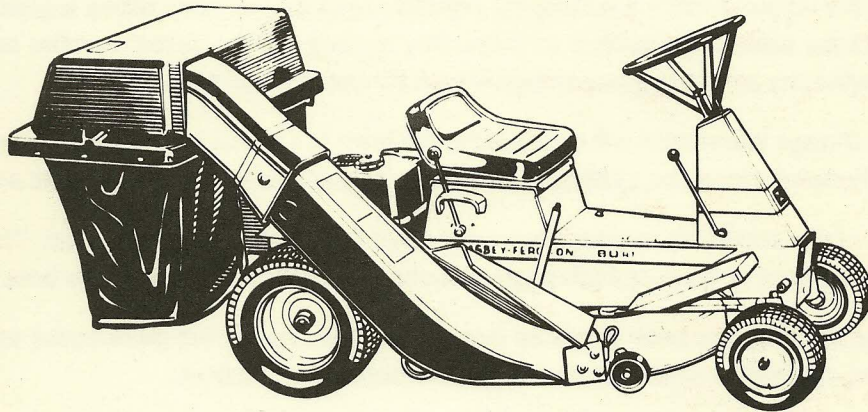


**LAWN & GARDEN
M-F 80RT**



651 623 M91

MASSEY-FERGUSON



GENERAL INFORMATION

This book is printed in two sections. The first section contains a group index plus a numerical index of all part numbers included in this book. The pages in this section are numbered with Roman numerals.

The second section includes a part number listing referenced to item numbers on the illustrated page directly opposite. Pages in this section are numbered with Arabic numerals.

The page numbers appear in the upper outer corner of the page. Parts book number and date appear in the lower right hand corner of the page. The part number listing page will also carry the machine name to assist in identifying the machine to which the parts book applies.

When changes to the machine make it necessary, revised pages for this book will be issued. The revised pages will be issued with the same page number as those they replace and the "issue" number and date will be advanced. New pages will carry an existing page number with an alphabetical suffix.

From time to time change information will be issued in the form of a "parts release and change bulletin". Information from these bulletins should be entered in the proper pages as soon as the bulletins are received.

Whenever a page of this book is re-issued, the current page listing will also be re-issued. This listing will show the issue number and date of issue of each page as a check sheet covering the entire book.

It is imperative that revised parts book pages be inserted into their respective parts books as soon as received. Failure to do so will lead to confusion and defeat the purpose of the book.

Indented parts in the descriptive list are a part of the preceding assembly or sub-assembly.

The quantity shown in the "Number Required" column is the number of parts used on a machine except where parts are indented in descriptive list. In this case the quantity shown is the number required for the preceding assembly or sub-assembly.

For certain parts such as bolts, nuts, washers, shims, etc. an "X" will be shown in the "Number Required" column. This "X" indicates that the quantity to be used is "as required".

Some parts are available only as complete assemblies with the individual component parts not serviced. The parts that are not serviced separately are indicated with an "NSS" in the Part Number column.

Always check illustration and number listing page before ordering. **NEVER ORDER FROM ILLUSTRATION ALONE.**

MASSEY-FERGUSON *equipment is designed and built for maximum performance and long life. All service parts are manufactured with the same care and precision exercised in production.*

Stock and sell only **MASSEY-FERGUSON** *parts*

GROUP INDEX

	Page		Page
Axle, Front.....	27	Fuel System.....	15
Battery.....	19	Gaskets.....	5
Brake Linkage.....	31	Governor.....	9
Carburetor.....	11	Oil Drain and Fill.....	7
Clutch.....	31	Stator.....	7
Control Tower.....	23	Timing Gear.....	5
Decals.....	21	Valves.....	5
Differential.....	35	Frame.....	23
Drive Chain.....	35	Mower Blades.....	39
Electrical System, Hardware.....	17	Mower Deck.....	41
Electrical System.....	19	Mower Drive Control.....	37
Engine		Mower Height and Lift Control.....	37
Air Cleaner.....	15	Mower Drive Assembly.....	39
Armature.....	9	Pistons.....	5
Camshaft.....	5	Seat.....	25
Counter Weight.....	13	Starter.....	13
Crankshaft.....	5	Steering.....	27
Cylinder Block.....	5	Throttle Control.....	17
Exhaust System.....	11	Transmission.....	33
Flywheel.....	7	Travel Control.....	29
Fuel Filter.....	15	Wheels.....	25

M-F 80 RT SUPPLEMENTAL NUMERICAL INDEX

PART NO.	SEE PAGE	PART NO.	SEE PAGE	PART NO.	SEE PAGE
3717 003 M1	17, 14	3717 166 M1	11	3717 318 M1	9
3717 014 M1	33, 35	3717 169 M1	13	3717 319 M1	9
3717 023 M1	39	3717 187 M1	25	3717 321 M1	9
3717 025 M1	27	3717 188 M1	27	3717 322 M1	5
3717 026 M1	35	3717 190 M1	35	3717 323 M1	9
3717 028 M1	39	3717 191 M1	7	3717 324 M1	11
3717 032 M1	39	3717 192 M1	9	3717 325 M1	15
3717 033 M1	37	3717 193 M1	5	3717 326 M1	11, 15
3717 034 M1	27	3717 194 M1	9	3717 327 M1	7
3717 041 M1	29	3717 195 M1	11	3717 329 M1	5
3717 046 M1	31	3717 196 M1	11	3717 330 M1	7
3717 048 M1	17, 31	3717 197 M1	11	3717 349 M1	35
3717 049 M1	17, 29, 41	3717 198 M1	11	3717 354 M1	21
3717 053 M1	27, 31, 35	3717 203 M1	7	3717 356 M1	27, 35
3717 054 M1	17	3717 204 M1	5	3717 369 M1	31, 37
3717 055 M1	27	3717 205 M1	11	3717 377 M1	29
3717 059 M1	31	3717 207 M1	7	3717 393 M1	17
3717 061 M1	41	3717 211 M1	11	3717 395 M1	37
3717 066 M1	27, 29, 31, 39	3717 212 M1	9	3717 405 M1	39
3717 069 M1	39	3717 213 M1	9	3717 411 M1	31, 41
3717 072 M1	25, 41	3717 214 M1	11	3717 417 M1	31, 39
3717 076 M1	17, 23, 25, 27, 29, 35	3717 217 M1	11	3717 465 M1	17
3717 077 M1	35, 37, 41	3717 218 M1	11	3717 479 M1	27, 29
3717 080 M1	37, 41	3717 225 M1	5	3717 491 M1	17
3717 083 M1	31, 37, 41	3717 226 M1	11	3717 492 M1	27
3717 088 M1	27	3717 227 M1	11	3717 494 M1	31
3717 092 M1	27	3717 235 M1	5	3717 497 M1	25
3717 096 M1	37	3717 241 M91	11	3717 516 M1	39
3717 101 M1	39	3717 243 M1	11	3717 518 M1	39
3717 103 M1	37	3717 244 M1	13	3717 568 M1	27
3717 104 M1	29	3717 246 M1	11	3717 569 M1	27
3717 106 M1	29	3717 247 M1	11	3717 590 M1	25
3717 111 M1	31	3717 260 M1	11, 31	3717 647 M1	27
3717 120 M1	31	3717 261 M1	5	3717 684 M1	35
3717 121 M1	17	3717 263 M91	5	3717 694 M1	25
3717 122 M1	17	3717 276 M1	11	3717 713 M1	35
3717 128 M1	23	3717 277 M91	11	3717 768 M1	39
3717 131 M1	17	3717 278 M1	11	3717 769 M1	39
3717 132 M1	17, 29	3717 279 M91	9	3717 907 M1	25
3717 133 M1	17, 29, 33, 39, 41	3717 280 M1	9	3717 918 M91	19
3717 134 M1	39	3717 282 M1	11	3717 919 M1	19
3717 137 M1	7	3717 301 M1	5	3717 920 M1	19
3717 141 M1	7	3717 302 M1	9	3717 977 M1	21
3717 142 M1	41	3717 307 M1	9	3717 978 M1	21
3717 148 M1	31, 37	3717 309 M1	11	3717 984 M1	19
3717 154 M1	29	3717 310 M1	7	3718 000 M1	39
3717 156 M1	31, 37	3717 311 M1	9	3718 034 M1	17, 25, 29
3717 158 M1	31, 37, 41	3717 312 M1	9	3718 061 M1	17
3717 159 M1	31	3717 315 M1	11	3718 062 M1	17
3717 160 M1	41	3717 316 M1	7	3718 066 M1	17

M-F 80 RT SUPPLEMENTAL NUMERICAL INDEX

PART NO.	SEE PAGE	PART NO.	SEE PAGE	PART NO.	SEE PAGE
3718 088 M1	19	3718 498 M1	9	3718 548 M91	5
3718 112 M1	21	3718 499 M1	11	3718 549 M91	5
3718 113 M1	17	3718 500 M1	9	3718 550 M91	5
3718 115 M1	21	3718 501 M1	5	3718 551 M91	5
3718 159 M1	37	3718 502 M1	15	3718 552 M91	5
3718 179 M1	7	3718 503 M1	15	3718 553 M91	5
3718 202 M1	9	3718 504 M1	11	3718 554 M1	13,19
3718 226 M1	29	3718 505 M1	11	3718 555 M1	13
3718 240 M1	5	3718 506 M1	7	3718 556 M91	13
3718 254 M1	27	3718 507 M1	5	3718 557 M91	13
3718 260 M1	37	3718 508 M1	5	3718 559 M1	5
3718 326 M1	9	3718 509 M1	5	3718 560 M91	5
3718 328 M1	5	3718 510 M1	5	3718 561 M1	15
3718 356 M1	17	3718 511 M1	13	3718 562 M1	9
3718 460 M91	35	3718 512 M1	7	3718 563 M1	5
3718 461 M1	41	3718 513 M1	9	3718 564 M1	11
3718 462 M1	35	3718 514 M1	5	3718 565 M1	15
3718 463 M1	31	3718 515 M91	5	3718 566 M1	5
3718 464 M1	31	3718 516 M91	5	3718 567 M1	7
3718 465 M1	41	3718 517 M1	5	3718 568 M1	35
3718 466 M1	29	3718 518 M1	15	3718 569 M1	33
3718 467 M1	27	3718 519 M1	15	3718 570 M1	33
3718 469 M1	31	3718 520 M91	5	3718 571 M91	35
3718 470 M1	31	3718 521 M91	13	3718 572 M1	35
3718 472 M1	31, 41	3718 522 M91	15	3718 573 M1	33
3718 473 M1	11	3718 523 M1	11	3718 574 M1	33
3718 474 M1	5	3718 524 M91	15	3718 575 M1	33
3718 475 M1	5	3718 525 M91	5	3718 576 M91	35
3718 476 M1	7	3718 526 M91	15	3718 577 M1	35
3718 477 M1	15	3718 527 M91	15	3718 578 M1	33
3718 478 M1	5	3718 528 M91	5	3718 579 M1	33
3718 479 M1	11	3718 529 M1	9	3718 580 M1	33
3718 480 M1	15	3718 530 M1	11	3718 581 M1	33
3718 481 M1	11	3718 531 M91	13	3718 582 M1	33
3718 482 M1	15	3718 532 M1	11	3718 583 M1	33
3718 483 M1	5	3718 533 M1	7	3718 584 M1	33
3718 484 M1	15	3718 534 M91	9	3718 585 M1	33
3718 485 M1	15	3718 535 M1	7	3718 586 M1	33
3718 486 M1	11	3718 536 M91	7	3718 587 M1	33
3718 487 M1	15	3718 537 M1	7	3718 588 M1	11, 33
3718 488 M1	7	3718 538 M91	5	3718 589 M1	33
3718 489 M1	5	3718 539 M91	5	3718 590 M1	35
3718 490 M1	15	3718 540 M91	13	3718 591 M1	35
3718 491 M1	5	3718 541 M1	13	3718 592 M1	33
3718 492 M1	11	3718 542 M1	7	3718 593 M1	35
3718 493 M1	15	3718 543 M91	7	3718 594 M1	33
3718 494 M1	5	3718 544 M1	7	3718 595 M1	35
3718 495 M1	5	3718 545 M91	13	3718 596 M1	33
3718 496 M1	5	3718 546 M91	5	3718 597 M1	33
3718 497 M1	9	3718 547 M91	5	3718 598 M1	33

M-F 80 RT SUPPLEMENTAL NUMERICAL INDEX

PART NO.	SEE PAGE	PART NO.	SEE PAGE	PART NO.	SEE PAGE
3718 599 M1	33	3718 649 M1	11	3718 700 M1	21
3718 600 M91	33	3718 650 M1	29, 37	3718 701 M1	21
3718 601 M1	33	3718 651 M1	39	3718 702 M1	21
3718 602 M1	35	3718 652 M1	17	3718 703 M1	21
3718 603 M1	35	3718 653 M1	31	3718 704 M1	23
3718 604 M1	33	3718 654 M1	39	3718 705 M1	27
3718 605 M1	33	3718 655 M1	31, 39	3718 706 M1	27
3718 606 M1	33	3718 656 M1	27	3718 707 M1	31
3718 607 M1	33	3718 657 M1	27	3718 708 M1	31
3718 608 M1	33	3718 658 M1	27	3718 709 M1	31
3718 609 M1	33	3718 659 M1	27	3718 710 M1	31
3718 610 M1	33	3718 660 M1	37, 41	3718 711 M1	31
3718 611 M1	33	3718 661 M1	39	3718 712 M1	31
3718 612 M1	33	3718 662 M1	17	3718 713 M1	27, 31
3718 613 M1	33	3718 663 M1	19	3718 714 M91	31
3718 614 M1	33	3718 664 M1	37	3718 715 M1	31
3718 615 M1	33	3718 665 M1	37	3718 716 M1	31
3718 616 M1	33	3718 666 M1	31	3718 717 M1	31
3718 617 M1	33	3718 667 M91	39	3718 718 M1	39
3718 618 M1	35	3718 668 M1	39	3718 719 M1	37
3718 619 M1	35	3718 669 M1	39	3718 720 M1	23
3718 620 M1	33	3718 670 M1	31, 39	3718 721 M1	23
3718 621 M1	33	3718 671 M91	35	3718 722 M1	23
3718 622 M1	33	3718 672 M1	41	3718 723 M1	29
3718 623 M1	33	3718 673 M1	41	3718 724 M1	31
3718 624 M1	33	3718 674 M1	41	3718 725 M1	31
3718 625 M1	33	3718 675 M1	41	3718 726 M1	17
3718 626 M1	33	3718 676 M1	41	3718 727 M1	35
3718 627 M1	33	3718 677 M1	27, 35	3718 728 M1	37
3718 628 M1	33	3718 678 M1	31	3718 729 M1	29
3718 629 M1	35	3718 679 M1	41	3718 730 M1	29
3718 630 M1	15	3718 680 M1	31	3718 731 M1	25
3718 631 M1	15	3718 681 M1	35	3718 732 M1	25
3718 632 M1	5	3718 682 M1	21	3718 733 M1	37
3718 633 M1	9	3718 683 M1	27	3718 734 M1	37
3718 634 M1	15	3718 684 M1	41	3718 735 M1	37
3718 635 M1	5	3718 685 M1	23	3718 736 M1	37
3718 636 M1	5	3718 686 M1	23	3718 737 M91	19
3718 637 M1	15	3718 687 M1	39	3718 738 M1	19
3718 638 M1	11	3718 688 M1	25, 29, 31	3718 739 M1	19
3718 639 M1	11	3718 689 M1	29	3718 740 M1	19
3718 640 M1	5	3718 690 M1	39	3718 741 M1	17
3718 641 M1	15	3718 691 M1	39	3718 742 M1	21
3718 642 M1	15	3718 692 M1	39	3718 743 M1	21
3718 643 M1	11	3718 693 M91	25	3718 744 M1	21
3718 644 M1	13	3718 695 M1	19	3718 745 M1	21
3718 645 M1	15	3718 696 M1	27	3718 746 M1	41
3718 646 M1	7	3718 697 M1	27	3718 747 M1	41
3718 647 M1	13	3718 698 M1	21	3718 748 M1	41
3718 648 M91	13	3718 699 M1	21	3718 749 M91	39

M-F 80 RT SUPPLEMENTAL NUMERICAL INDEX

PART NO.	SEE PAGE	PART NO.	SEE PAGE	PART NO.	SEE PAGE
3718 750 M1	39	3718 757 M1	37	3719 625 M1	37
3718 751 M1	39	3719 617 M1	5	3719 626 M1	25
3718 752 M1	31	3719 618 M91	13	3719 627 M1	29
3718 753 M1	29	3719 621 M91	35	3719 628 M1	29
3718 754 M1	27	3719 622 M1	35	3719 629 M1	27
3718 755 M1	19	3719 623 M91	5		
3718 756 M1	7	3719 624 M91	29		

M-F 80 RT

PAGE RESERVED

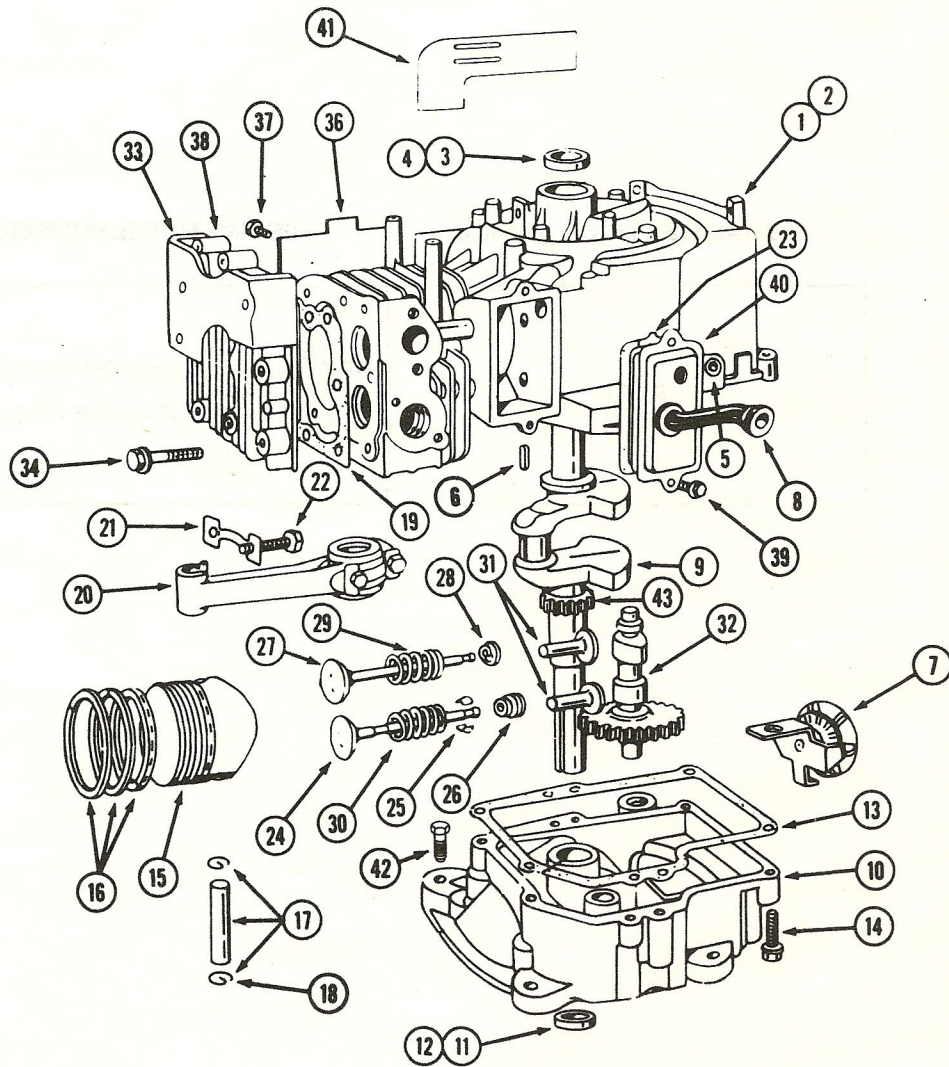
77 03 1-45

LAWNMOWER MODEL NUMBER

ENGINE MODEL NUMBER

80 RT	BRIGGS AND STRATTON 3719 605 M91 SPEC. 193707 - TYPE 4012-01
-------	---

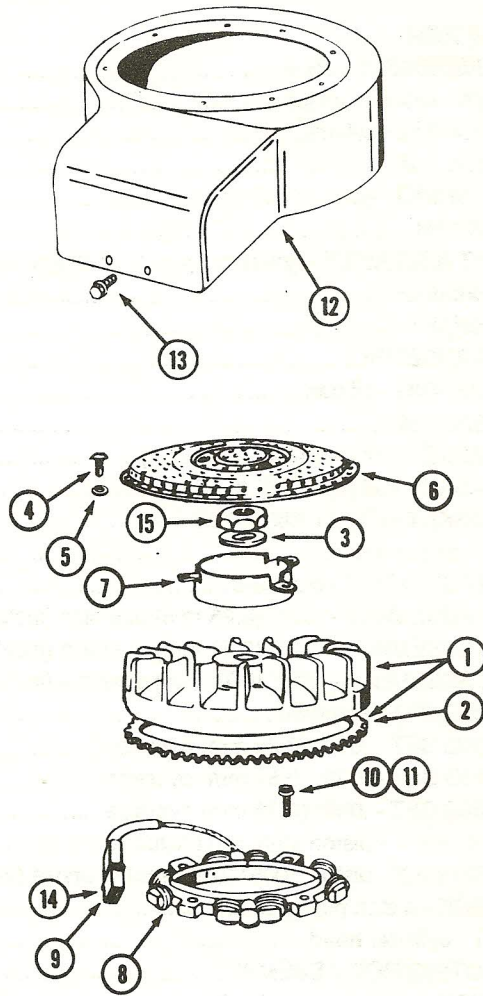
ENGINE BLOCK ASSEMBLY



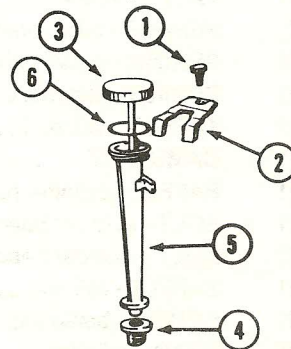
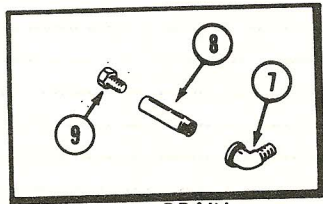
ENGINE BLOCK ASSEMBLY

REF	PART NO.	DESCRIPTION	NO. REQ'D M-F 80 RT
1	3718 560 M91	BLOCK ASSEMBLY - short	1
2	NSS	BLOCK - cylinder, stripped.....	1
3	3718 563 M1	BUSHING - cylinder	1
4	3718 514 M1	SEAL - oil.....	1
5	3718 494 M1	BUSHING - governor shaft.....	1
6	3717 204 M1	KEY - flywheel	1
7	3718 539 M91	BRACKET ASSEMBLY - governor gear & oil slinger	1
8	3718 510 M1	TUBE - breather	1
9	3718 559 M1	CRANKSHAFT	1
10	3718 538 M91	OIL PAN ASSEMBLY.....	1
11	3718 517 M1	BUSHING - oil pan	1
12	3717 261 M1	SEAL - oil.....	1
13	3718 507 M1	GASKET - oil pan 1/64" (0.40 mm)	1
13	3718 508 M1	GASKET - oil pan .005" (0.13 mm)	1
13	3718 509 M1	GASKET - oil pan .009" (0.23 mm)	1
14	3718 640 M1	SCREW - oil pan mtg.	4
15	3718 546 M91	PISTON ASSEMBLY - standard	1
15	3718 547 M91	PISTON ASSEMBLY - .010" (0.25 mm) oversize (includes rings)	1
15	3718 548 M91	PISTON ASSEMBLY - .020" (0.51 mm) oversize (includes rings)	1
15	3718 549 M91	PISTON ASSEMBLY - .030" (0.76 mm) oversize (includes rings)	1
16	3718 550 M91	RING SET - standard	1
16	3718 551 M91	RING SET - .010" (0.25 mm) oversize.....	1
16	3718 552 M91	RING SET - .020" (0.51 mm) oversize.....	1
16	3718 553 M91	RING SET - .030" (0.76 mm) oversize.....	1
17	3718 515 M91	PIN ASSEMBLY - piston standard (includes locks).....	1
17	3718 516 M91	PIN ASSEMBLY - piston, .005" (0.13 mm) oversize (includes locks).....	1
18	3718 566 M1	LOCK - piston pin	1
19	3718 501 M1	GASKET - cylinder head	1
20	3718 525 M91	CONNECTING ROD ASSEMBLY	1
21	3718 483 M1	LOCK - connecting rod bolt	1
22	3718 632 M1	BOLT - connecting rod	2
23	3717 235 M1	GASKET - valve cover	1
24	3718 528 M91	VALVE - exhaust.....	1
25	3717 328 M1	LOCK - exhaust valve	2
26	3717 240 M1	ROTATOR - exhaust valve	1
27	3718 496 M1	VALVE - intake	1
28	3717 193 M1	KEEPER - intake valve.....	1
29	3717 301 M1	SPRING - intake valve	1
30	3717 225 M1	SPRING - exhaust valve	1
31	3718 495 M1	TAPPET - valve.....	2
32	3718 474 M1	CAMSHAFT.....	1
33	3718 489 M1	BAFFLE - cylinder head	1
34	3717 329 M1	BOLT - cylinder head, 3"	X
34	3718 636 M1	BOLT - cylinder head, 2-21/32"	X
36	3718 491 M1	BAFFLE - cylinder	1
37	3718 635 M1	SCREW - baffle mtg.....	1
38	3718 475 M1	HEAD - cylinder	1
39	3717 322 M1	SCREW - sems	2
40	3717 263 M91	BREATHER - crankcase	1
41	3718 478 M1	GUIDE - air.....	1
	3718 520 M91	GASKET SET - includes items 13, 19, 23 and carburetor mounting gasket	1
42	3719 619 M1	BOLT - 3/8" - 16 x 1-1/4" self-tapping	4
43	3719 617 M1	GEAR - timing	1

FLYWHEEL AND STATOR



OIL DRAIN AND FILL



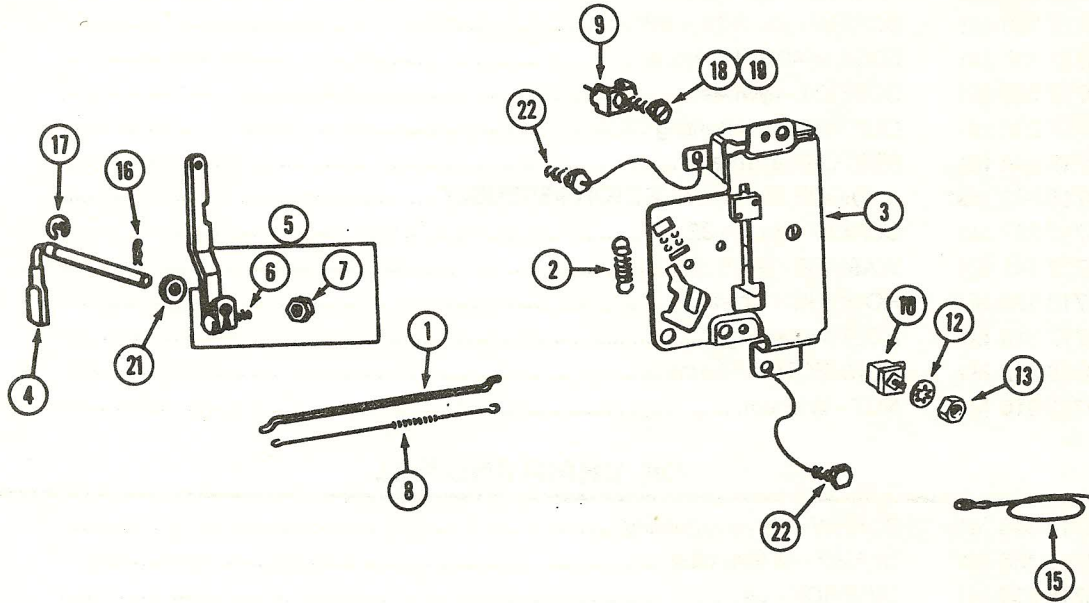
FLYWHEEL AND STATOR

REF	PART NO.	DESCRIPTION	NO. REQ'D M-F 80 RT
1	3718 536 M91	FLYWHEEL ASSEMBLY	1
2	3718 537 M1	RING GEAR	1
3	3717 191 M1	WASHER - spring.....	1
4	3717 330 M1	SCREW - No. 8-32 x 3/8".....	3
5	3717 137 M1	LOCK WASHER - No. 8.....	3
6	3717 207 M1	SCREEN - flywheel	1
7	3717 203 M1	CUP - screen mounting.....	1
8	3718 544 M1	STATOR - alternator	1
9	3718 543 M91	DIODE AND CONNECTOR ASSEMBLY	1
10	3717 327 M1	SCREW - No. 8 - 32 x 1".....	4
11	3717 141 M1	WASHER - No. 8.....	4
12	3718 533 M1	HOUSING - blower.....	1
13	3717 316 M1	BOLT - retaining	4
14	3718 542 M1	CONNECTOR - harness.....	1
15	3717 310 M1	NUT - flywheel.....	1

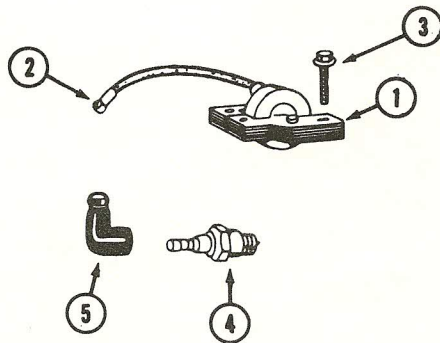
OIL DRAIN AND FILL

1	3718 646 M1	SCREW - clamp mounting	1
2	3718 488 M1	CLAMP - oil filler tube.....	1
3	3718 535 M1	DIPSTICK - oil.....	1
4	3718 567 M1	SEAL - filler tube	1
5	3718 512 M1	TUBE - oil filler.....	1
6	3718 506 M1	SEAL - filler cap.....	1
7	3718 476 M1	ELBOW - 90° street.....	1
8	3718 756 M1	NIPPLE - pipe.....	1
9	3718 179 M1	PLUG - oil drain.....	1

GOVERNOR



MAGNETO ARMATURE



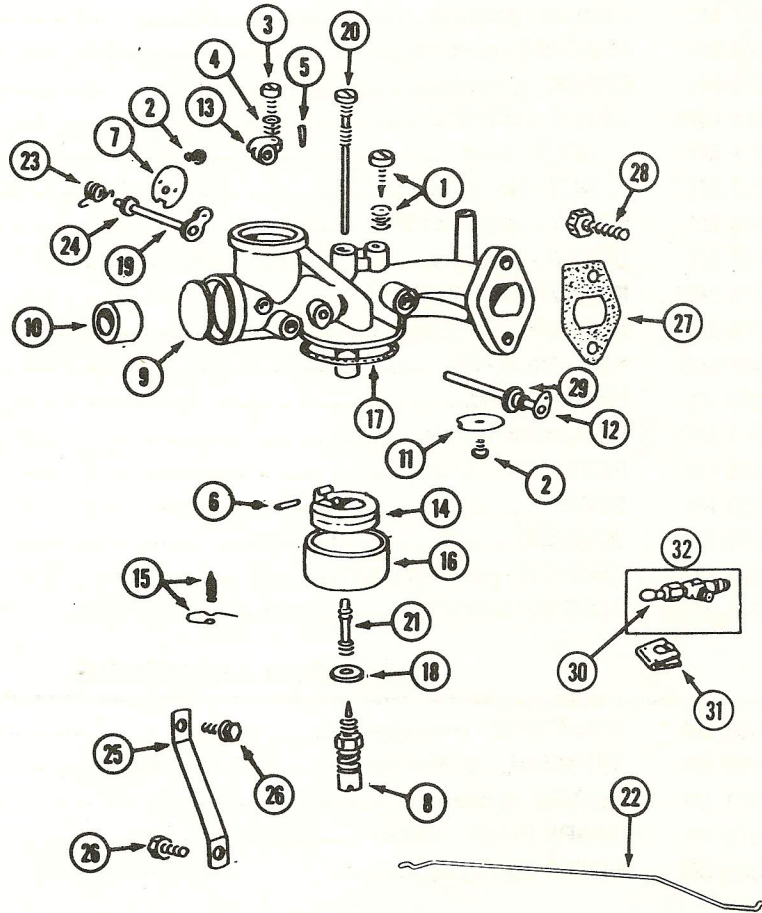
GOVERNOR

REF	PART NO.	DESCRIPTION	NO. REQ'D M-F 80 RT
1	3718 498 M1	LINK - governor	1
2	3718 497 M1	SPRING - governor	1
3	3718 529 M1	BRACKET - governor	1
4	3717 212 M1	CRANK - governor	1
5	3718 534 M91	LEVER ASSEMBLY	1
6	3717 311 M1	BOLT - lever	1
7	3717 213 M1	NUT - No. 10 - 24	1
8	3718 500 M1	SPRING - governor link	1
9	3717 192 M1	CLAMP - casing	1
10	3717 279 M91	INSULATOR ASSEMBLY	1
12	3717 312 M1	LOCKWASHER	2
13	3717 307 M1	NUT - No. 8 - 32	2
15	3717 280 M1	WIRE - ground	1
16	3717 318 M1	PIN - cotter hair pin	1
17	3717 319 M1	RETAINER - "E" ring	1
18	3717 323 M1	SCREW	1
19	3718 633 M1	WASHER	1
21	3717 202 M1	WASHER - governor crank	1
22	3717 326 M1	SCREW - mounting	1

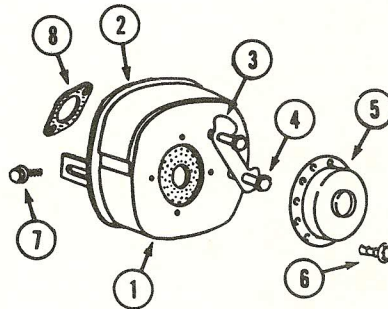
MAGNETO ARMATURE

1	3718 562 M1	ARMATURE - magneto	1
2	3717 194 M1	TERMINAL - ignition cable	1
3	3717 321 M1	SCREW - mounting	2
4	3718 513 M1	SPARK PLUG - resistor	1
5	3717 302 M1	BOOT - spark plug	1

CARBURETOR



EXHAUST SYSTEM



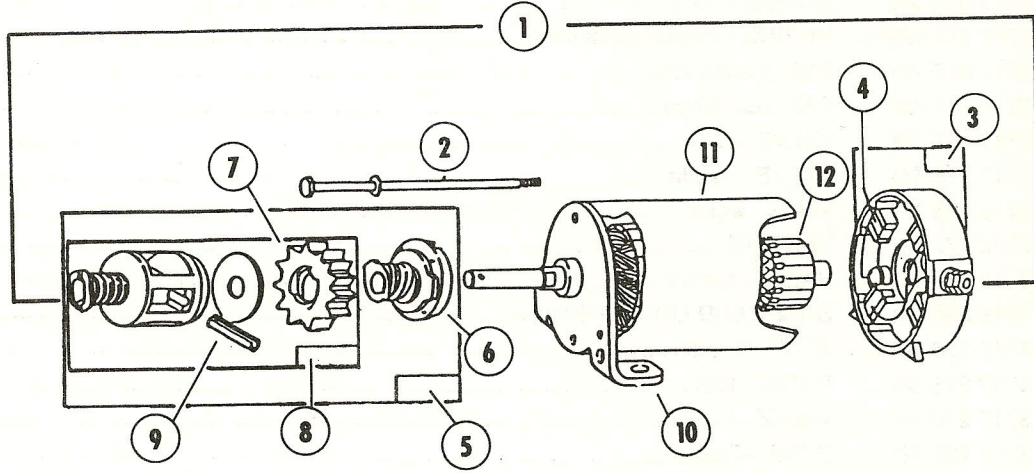
CARBURETOR

REF	PART NO.	DESCRIPTION	NO. REQ'D M-F 80 RT
	3718 530 M1	CARBURETOR	1
1	3717 241 M91	VALVE - idle (includes spring)	1
2	3717 324 M1	SCREW - throttle and choke valve mounting	3
3	3717 309 M1	SCREW - No. 8 - 32 x 5/8"	1
4	3717 218 M1	SPRING - throttle adjustment	1
5	3717 315 M1	PIN - throttle stop	1
6	3717 211 M1	PIN - float hinge	1
7	3717 197 M1	VALVE - choke	1
8	3717 278 M1	VALVE - needle	1
9	3717 196 M1	PLUG - welch	1
10	3718 473 M1	VENTURI	1
11	3718 479 M1	VALVE - throttle	1
12	3718 564 M1	SHAFT AND LEVER - throttle	1
13	3717 166 M1	STOP - throttle	1
14	3717 246 M1	FLOAT - fuel	1
15	3717 276 M1	VALVE - fuel inlet	1
16	3717 195 M1	BOWL - float	1
17	3717 227 M1	GASKET - float bowl	1
18	3717 198 M1	WASHER - float bowl	1
19	3717 260 M1	SHAFT AND LEVER - choke	1
20	3717 247 M1	NOZZLE - fuel	1
21	3717 214 M1	SCREW - nozzle	1
22	3718 499 M1	LINK - choke	1
23	3717 217 M1	SPRING - choke return	1
24	3717 226 M1	WASHER - choke shaft	1
25	3718 481 M1	BRACKET - mounting	1
26	3717 326 M1	SCREW - mounting	2
27	3718 504 M1	GASKET - carburetor mounting	1
28	3718 638 M1	SCREW - mounting	2
29	3717 282 M1	SEAL - throttle shaft	1
	3717 277 M91	KIT - carburetor overhaul (includes 1, 6, 8, 9, 15, 17, 18, 20, and 21)	1
30	3717 243 M1	VALVE - fuel shuf off	1
31	3717 205 M1	HANDLE - fuel shut off	1
32	3718 523 M1	CONNECTOR - fuel pipe	1

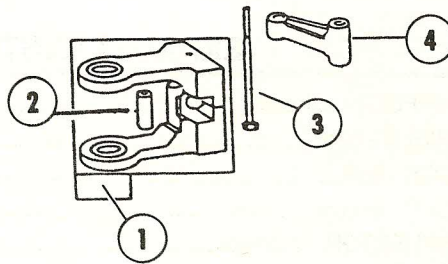
EXHAUST SYSTEM

1	3718 532 M1	MUFFLER - exhaust	1
2	3718 492 M1	SHIELD - heat	1
3	3718 486 M1	LOCK - bolt	1
4	3718 649 M1	BOLT - muffler	2
5	3718 558 M1	DEFLECTOR - exhaust	1
6	3718 643 M1	SCREW - special	4
7	3718 639 M1	SCREW	1
8	3718 505 M1	GASKET - exhaust	1

STARTER MOTOR



COUNTER WEIGHT



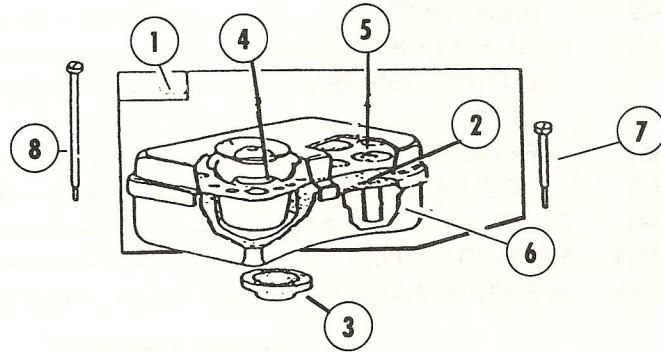
STARTER MOTOR

REF	PART NO.	DESCRIPTION	NO. REQ'D
			M-F 80 RT
1	3718 554 M1	MOTOR - starting 12 volt	1
2	3718 648 M91	BOLT ASSEMBLY	1
3	3718 556 M91	END CAP ASSEMBLY	1
4	3718 557 M91	BRUSH ASSEMBLY	1
5	3719 618 M91	DRIVE ASSEMBLY	1
6	3718 531 M91	CLUTCH ASSEMBLY	1
7	3718 511 M1	GEAR	1
8	3718 541 M1	RETAINER and pin	1
9	3718 644 M1	ROLL PIN	1
10	3718 555 M1	DRIVE - end cap assembly	1
11	3718 545 M91	HOUSING ASSEMBLY	1
12	3718 540 M91	ARMATURE ASSEMBLY	1

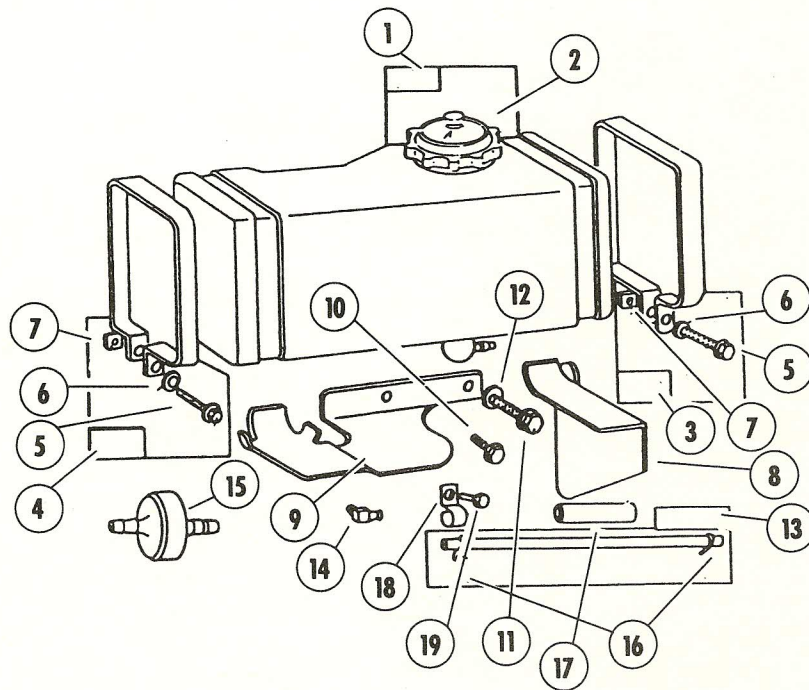
COUNTER WEIGHT

1	3718 521 M91	COUNTERWEIGHT ASSEMBLY	1
2	3717 244 M1	PIN - counterweight	1
3	3718 647 M1	SCREW - counterweight	1
4	3717 169 M1	LINK - counterweight	1

AIR CLEANER



FUEL SYSTEM



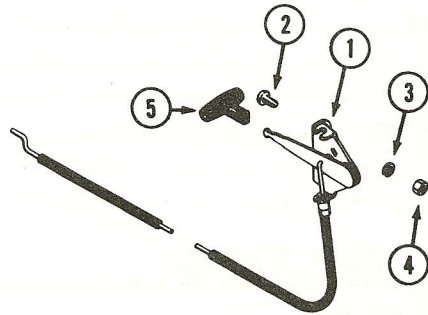
AIR CLEANER

REF	PART NO.	DESCRIPTION	NO. REQ'D M-F 80 RT
1	3718 524 M91	CLEANER ASSEMBLY.....	1
2	3718 502 M1	ELEMENT - air cleaner.....	1
3	3718 503 M1	GASKET - element.....	1
4	3718 484 M1	CUP - air cleaner.....	1
5	3718 480 M1	SCREEN - air cleaner.....	1
6	3718 487 M1	SPACER - air cleaner.....	1
7	3718 637 M1	SCREW - air cleaner.....	1
8	3718 641 M1	SCREW - air cleaner.....	1

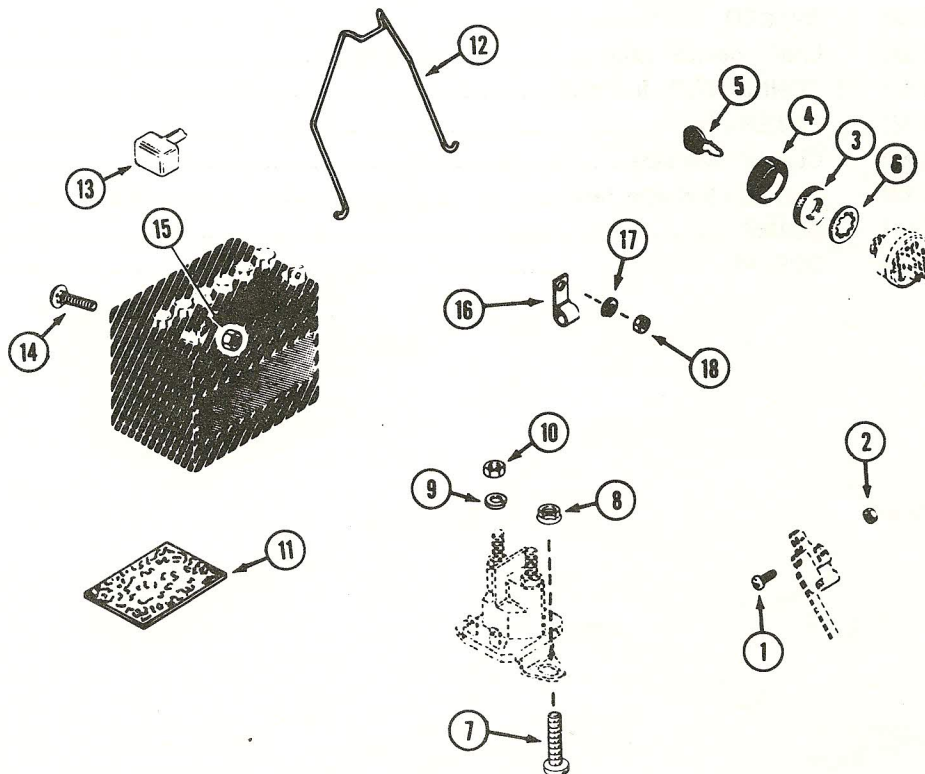
FUEL SYSTEM

1	3718 522 M91	TANK ASSEMBLY - fuel (3 quart).....	1
2	3718 561 M1	CAP - fuel tank.....	1
3	3718 527 M91	STRAP ASSEMBLY - fuel tank (R.H.).....	1
4	3718 526 M91	STRAP ASSEMBLY - fuel tank (L.H.).....	1
5	3718 645 M1	SCREW - hex head.....	1
6	3718 630 M1	WASHER - lock, 1/4 x 3/32 x 5/64".....	1
7	3718 631 M1	NUT - square, 1/4 - 20.....	1
8	3718 490 M1	BRACKET - fuel tank (R.H.).....	1
9	3718 482 M1	BRACKET - fuel tank (L.H.).....	1
10	3717 325 M1	SCREW.....	1
11	3718 642 M1	SCREW - hex head.....	1
12	3718 493 M1	SPACER - fuel tank.....	1
13	3718 518 M1	LINE - fuel (23" long).....	1
14	3718 565 M1	CONNECTOR - fuel pipe.....	1
15	3718 519 M1	FILTER - fuel.....	1
16	3718 634 M1	CLAMP - fuel pipe.....	2
17	3718 485 M1	SHIELD - fuel pipe, heat.....	1
18	3718 477 M1	CLAMP.....	2
19	3717 326 M1	SCREW.....	1

THROTTLE CONTROL



ELECTRICAL SYSTEM HARDWARE



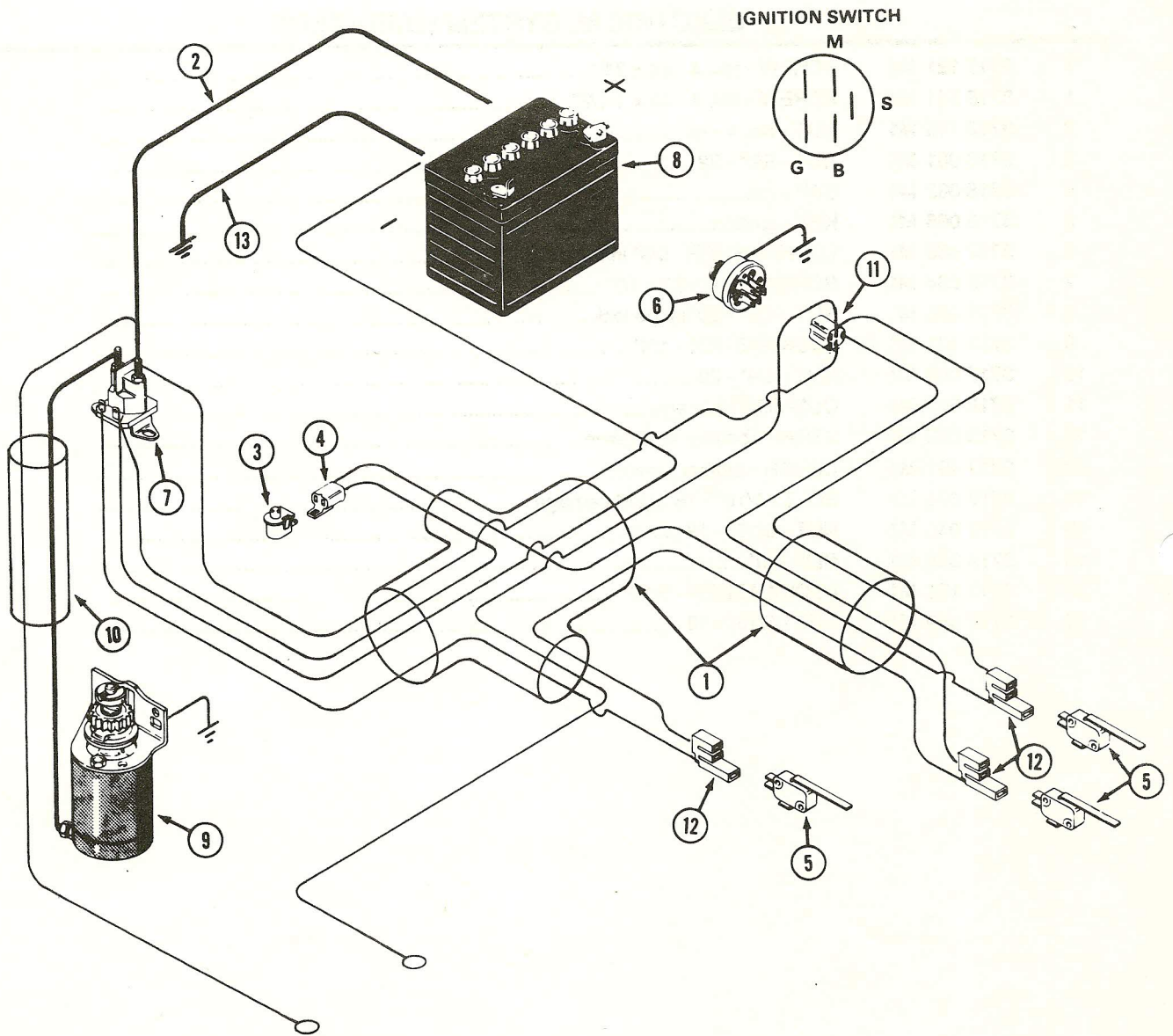
THROTTLE CONTROL

REF	PART NO.	DESCRIPTION	NO. REQ'D M-F 80 RT
1	3718 726 M1	CONTROL - choke/throttle.....	1
2	3717 122 M1	SCREW - No. 10 - 24 x 3/4".....	2
3	3717 131 M1	LOCKWASHER - No. 10.....	2
4	3717 054 M1	NUT - No. 10 - 24.....	2
5	3717393 M1	HANDLE - control.....	1

ELECTRICAL SYSTEM HARDWARE

1	3717 121 M1	SCREW - No. 4 - 40 x 7/8".....	2
1	3718 741 M1	SCREW - No. 4 - 40 x 1-1/8".....	2
2	3718 113 M1	NUT - No. 4 - 40.....	4
3	3718 061 M1	NUT - 5/8" - 32.....	1
4	3718 062 M1	CAP - nut.....	1
5	3718 066 M1	KEY - ignition.....	1
6	3717 465 M1	LOCKWASHER - 5/8" internal tooth.....	1
7	3718 034 M1	SCREW - 1/4" - 20 x 1/2".....	2
8	3717 076 M1	NUT - 1/4" - 20 flange lock.....	2
9	3717 132 M1	LOCKWASHER - 1/4".....	2
10	3717 048 M1	NUT - 1/4" - 20.....	2
11	3718 662 M1	CUSHION - battery.....	2
12	3718 652 M1	STRAP - battery hold down.....	1
13	3717 491 M1	COVER - battery terminal.....	1
14	3717 003 M1	BOLT - 5/16" - 18 x 3/4" carriage.....	2
15	3717 049 M1	NUT - 5/16" - 18.....	2
16	3718 356 M1	CLIP - "J".....	2
17	3717 133 M1	LOCKWASHER - 5/16".....	1
18	3717 049 M1	NUT - 5/16" - 18.....	1

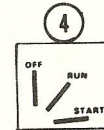
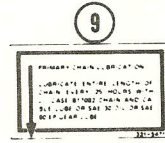
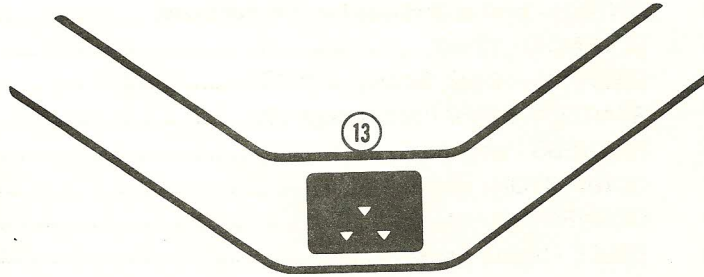
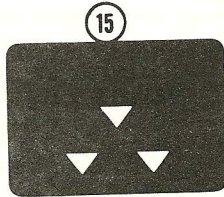
ELECTRICAL SYSTEM



ELECTRICAL SYSTEM

REF	PART NO.	DESCRIPTION	NO. REQ'D M-F 80 RT
1	3718 737 M91	HARNESS - wire	1
2	3718 739 M1	CABLE - battery positive to solenoid.....	1
3	3718 755 M1	SWITCH - seat	1
4	3718 695 M1	CONNECTOR - switch.....	1
5	3717 919 M1	SWITCH - interlock.....	3
6	3717 918 M91	SWITCH - ignition (includes key and hardware).....	1
7	3718 088 M1	SOLENOID - 12 volt.....	1
8	3717 984 M1	BATTERY - 12 volt, 32 amp, 230 CCA.....	1
9	3718 554 M1	STARTER - 12 volt (repairs page 13).....	1
10	3718 738 M1	HARNESS - wire	1
11	3718 663 M1	CONNECTOR - ignition switch	1
12	3717 920 M1	CONNECTOR - interlock switch	3
13	3718 740 M1	CABLE - battery negative.....	1

MASSEY-FERGUSON 80RT



1

CAUTION

READ OPERATOR'S MANUAL. KEEP ALL SHIELDS AND SAFETY SWITCHES FUNCTIONAL. KNOW LOCATION AND FUNCTION OF ALL CONTROLS. REMOVE OBJECTS FROM THE TERRAIN THAT COULD BE THROWN BY THE MOWER. NEVER CARRY PASSENGERS. KEEP PEOPLE AND PETS A SAFE DISTANCE AWAY.

ALWAYS LOOK BEHIND RIDER BEFORE BACKING. TIP OVER CAN OCCUR WHEN OPERATING ON LOADING RAMPS OR HILLS; BACK UP RAMPS OR HILLS. DRIVE FORWARD GOING DOWN RAMPS OR HILLS. TO PARK RIDER: PLACE TRAVEL CONTROL IN NEUTRAL, ENGAGE PARKING BRAKE, DISENGAGE MOWER DRIVE, SHUT ENGINE OFF AND REMOVE KEY. PARK RIDER AND WAIT FOR ALL MOTION TO STOP BEFORE SERVICING OR MAKING ADJUSTMENTS TO RIDER OR MOWER. REMOVE KEY WHEN LEAVING RIDER.

FAILURE TO OBSERVE THESE PRECAUTIONS COULD RESULT IN INJURY.

OPERATION INSTRUCTIONS

REFER TO OPERATOR'S MANUAL FOR COMPLETE INSTRUCTIONS

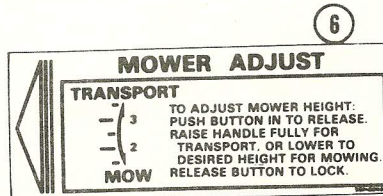
TRAVEL CONTROL - NEUTRAL - LEVER SLIDES OUTWARD INTO "N" NOTCH
FORWARD - PULL LEVER INWARD, MOVE FORWARD
REVERSE - PULL LEVER INWARD, MOVE REARWARD

CLUTCH/BRAKE - TO DECLUTCH - DEPRESS PEDAL HALFWAY. TO BRAKE - DEPRESS PEDAL FULLY

PARKING BRAKE - TO ENGAGE - APPLY BRAKE AND PRESS LOCK DOWN. TO RELEASE - DEPRESS PEDAL

MOWER DRIVE - TO ENGAGE - PUSH FORWARD. TO DISENGAGE - PULL REARWARD.
TO START ENGINE - DISENGAGE MOWER DRIVE AND SET PARKING BRAKE.

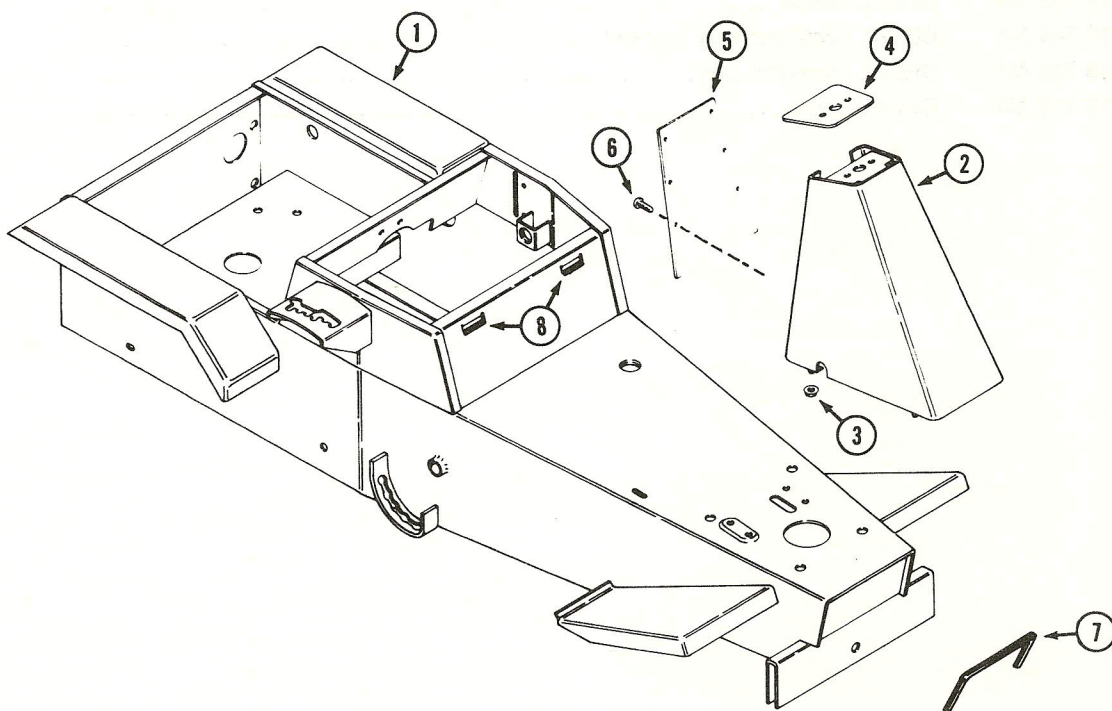
PRESS DOWN TO LOCK LOCK **P** PARKING BRAKE



DECALS

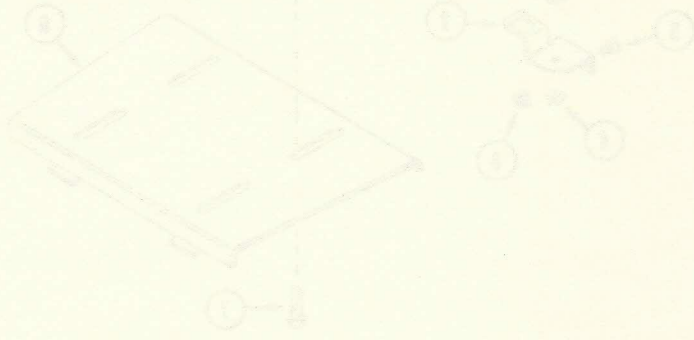
REF	PART NO.	DESCRIPTION	NO. REQ'D
			M-F 80 RT
1	3718 742 M1	DECAL - operation	1
2	3718 112 M1	DECAL - clutch/brake	1
3	3718 698 M1	DECAL - throttle	1
4	3718 699 M1	DECAL - ignition switch	1
5	3718 702 M1	DECAL - attachment drive	1
6	3718 703 M1	DECAL - mower height adjust	1
7	3718 700 M1	DECAL - shift pattern	1
8	3718 701 M1	DECAL - travel control	1
9	3718 682 M1	DECAL - chain lubrication	1
10	3717 978 M1	DECAL - "Danger" spinning blade	1
11	3717 354 M1	DECAL - "No Step"	1
12	3717 977 M1	DECAL - "Danger" flying debris	1
13	3718 743 M1	DECAL - tower	1
14	3718 744 M1	DECAL - side trim R.H. (shown)	1
14	3718 745 M1	DECAL - side trim L.H.	1
15	3718 115 M1	DECAL - logo	1

FRAME AND CONTROL TOWER

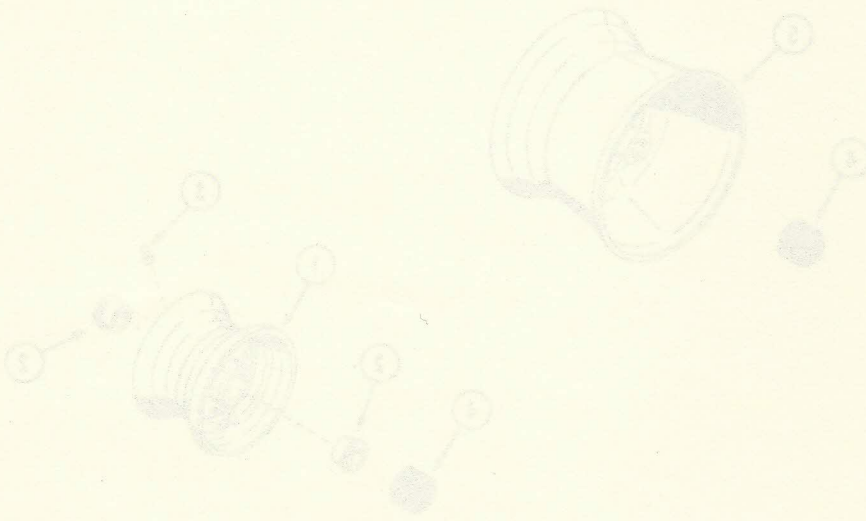


FRAME AND CONTROL TOWER

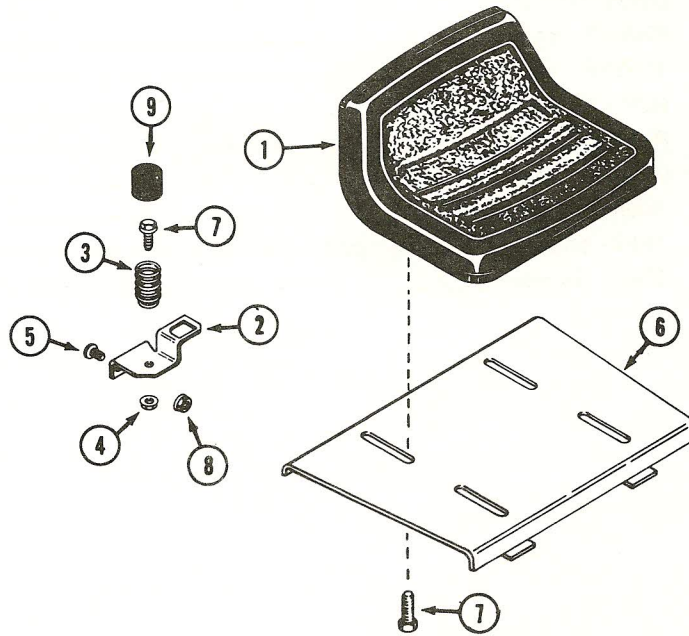
REF	PART NO.	DESCRIPTION	NO. REQ'D M-F 80 RT
1	3718 704 M1	FRAME - main.....	1
2	3718 720 M1	TOWER - control.....	1
3	3717 076 M1	NUT - 1/4" - 20 flange lock.....	4
4	3718 721 M1	PLATE - crown.....	1
5	3718 722 M1	PANEL - tower.....	1
6	3717 128 M1	SCREW - No. 8 - 18 x 1/2".....	6
7	3718 685 M1	TRIM - channel and seat support.....	2
8	3718 686 M1	TRIM - channel.....	2



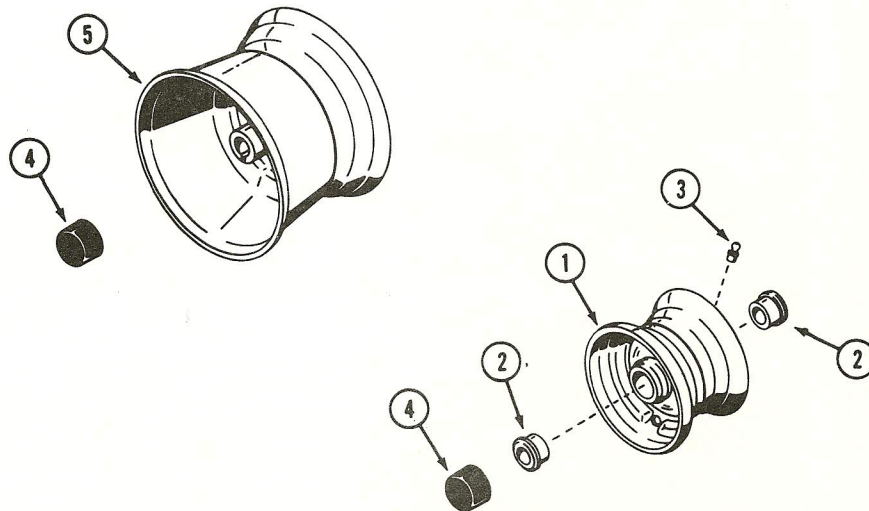
FRONT AND REAR WHEELS



SEAT AND SUPPORT



FRONT AND REAR WHEELS



SEAT AND SUPPORT

25

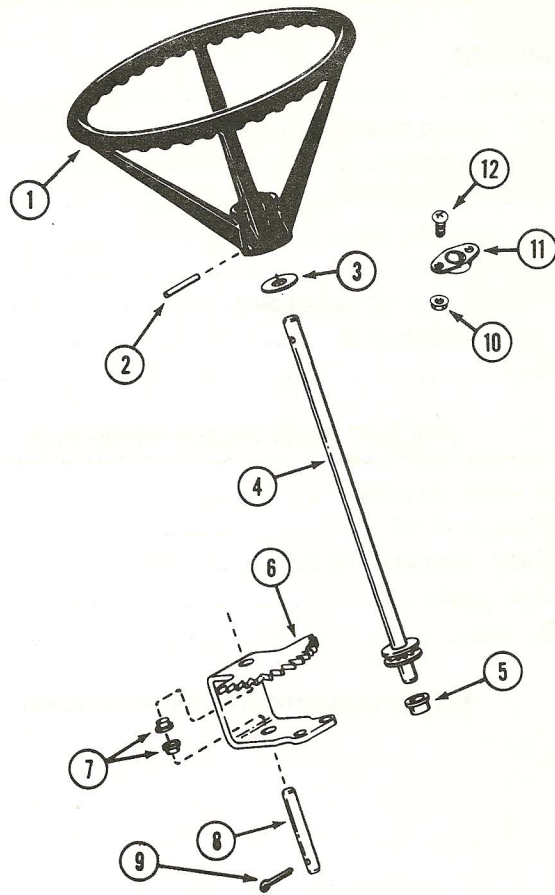
REF	PART NO.	DESCRIPTION	NO. REQ'D
			M-F 80 RT
1	3717 907 M1	SEAT - black	1
2	3718 731 M1	BRACKET - spring mounting	1
3	3718 732 M1	SPRING - seat switch.....	1
4	3717 072 M1	NUT - 5/16" - 18 flange lock	1
5	3718 034 M1	SCREW - 1/4" - 20 x 1/2"	2
6	3719 626 M1	SUPPORT - seat.....	1
7	3718 688 M1	BOLT - 5/16" - 18 x 1/2" self-tapping	5
8	3717 076 M1	NUT - 1/4" - 20 flange lock	2
9	3717 590 M1	CAP - dust.....	1

FRONT AND REAR WHEELS

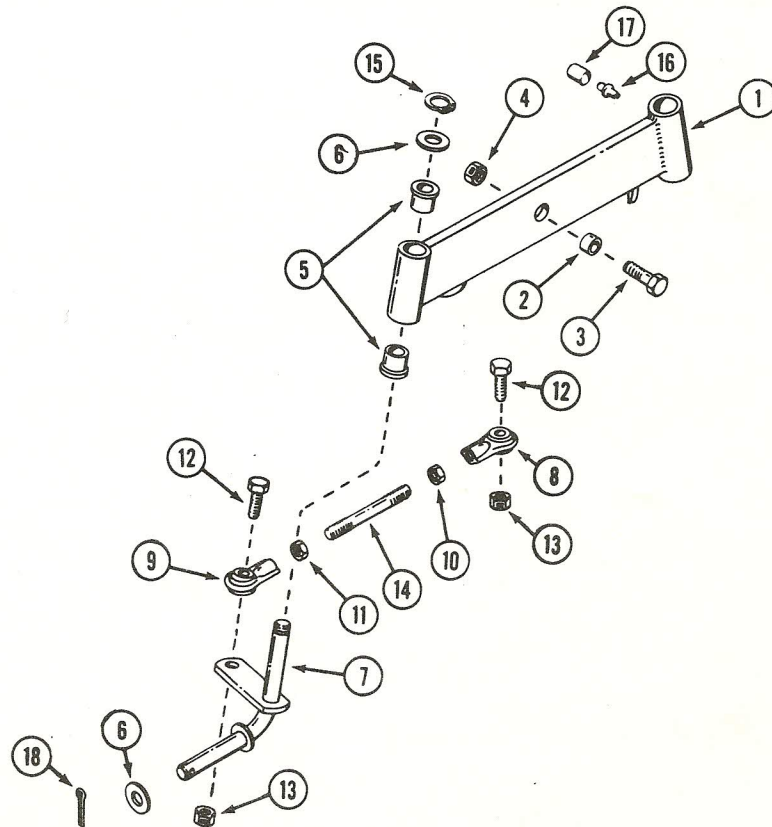
1	3718 693 M91	WHEEL - front assembly	2
2	3717 497 M1	BUSHING - wheel	2
3	3717 187 M1	FITTING - lube 1/4" - 28 taper.....	1
4	3717 590 M1	CAP - hub, plastic.....	4
5	3718 694 M1	WHEEL - rear	2

NOTE: obtain tires at your local tire dealer.

STEERING ASSEMBLY



FRONT AXLE



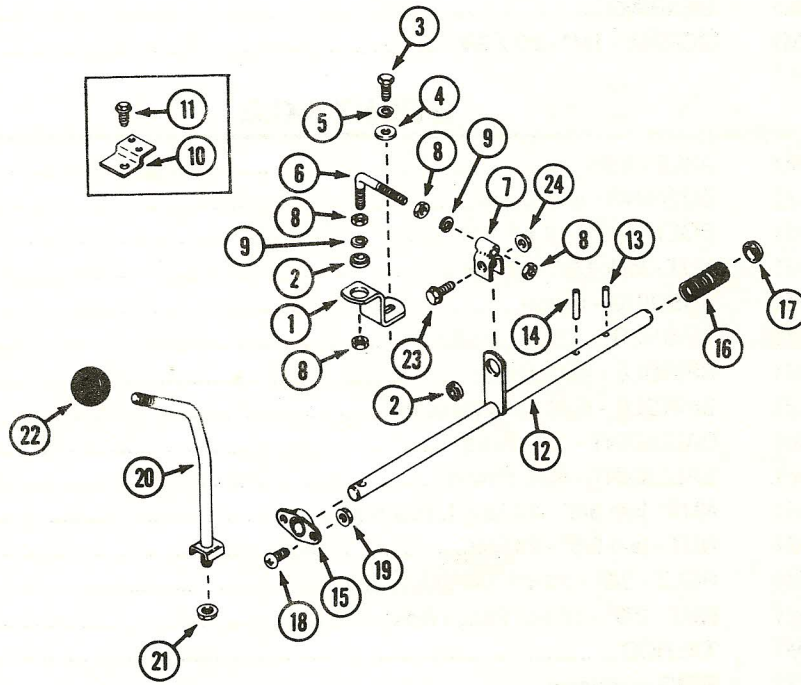
STEERING ASSEMBLY

REF	PART NO.	DESCRIPTION	NO. REQ'D
			M-F 80 RT
1	3718 657 M1	WHEEL - steering.....	1
2	3717 092 M1	PIN - steering wheel to shaft 1/4" x 2".....	1
3	3718 754 M1	WASHER - 5/8" nylon	4
4	3718 706 M1	SHAFT - steering.....	1
5	3717 647 M1	BUSHING - flange, bronze.....	1
6	3718 658 M1	GEAR - sector, steering	1
7	3717 492 M1	BUSHING - flange, bronze.....	2
8	3718 659 M1	PIN - pivot, sector gear (service part)	1
9	3717 088 M1	PIN - cotter 1/8" x 1-1/8".....	1
10	3717 076 M1	NUT - 1/4 - 20 flange lock	2
11	3717 479 M1	BEARING	1
12	3719 629 M1	SCREW - 1/4" - 20 x 3/4"	2

FRONT AXLE

1	3718 705 M1	AXLE - front.....	1
2	3718 683 M1	BUSHING - axle pivot.....	1
3	3717 034 M1	BOLT - 1/2" - 13 x 1-1/2".....	1
4	3718 467 M1	NUT - lock 1/2" - 13 hex	1
5	3718 677 M1	BUSHING - flange	4
6	3717 713 M1	WASHER.....	4
7	3718 696 M1	SPINDLE - left hand.....	1
7	3718 697 M1	SPINDLE - right hand (shown).....	1
8	3717 569 M1	BALLJOINT - L.H. thread	2
9	3717 568 M1	BALLJOINT - R.H. thread	2
10	3717 055 M1	NUT - jam 3/8" - 24 hex, L.H. thread.....	2
11	3717 053 M1	NUT - jam 3/8" - 24 hex.....	2
12	3717 025 M1	BOLT - 3/8" - 16 x 1-1/4".....	4
13	3717 066 M1	NUT - 3/8" - 16 hex flange lock	4
14	3718 656 M1	TIE ROD.....	2
15	3718 254 M1	RING - retaining	4
16	3717 188 M1	FITTING - lubrication.....	2
17	3717 356 M1	COVER - lubrication fitting	2
18	3717 088 M1	PIN - cotter 1/8" x 1-1/8".....	2

TRAVEL CONTROL



TRAVEL CONTROL

REF	PART NO.	DESCRIPTION	NO. REQ'D M-F 80 RT
1	3719 624 M91	CRANK - shift (includes Ref. 2).....	1
2	3718 689 M1	BUSHING - ball 5/16".....	2
3	3717 041 M1	BOLT - 1/4" - 28 x 1/2".....	1
4	3717 154 M1	WASHER - 1/4".....	1
5	3717 132 M1	LOCKWASHER - 1/4".....	1
6	3718 729 M1	BOLT - "J".....	1
7	3718 730 M1	YOLK - adjustment.....	1
8	3717 049 M1	NUT - 5/16" - 18.....	4
9	3717 133 M1	LOCKWASHER - 5/16".....	2
10	3719 627 M1	BRACKET - interlock switch.....	1
11	3718 688 M1	BOLT - 5/16" - 18 x 1/2" self-tapping.....	1
12	3719 628 M1	SHAFT - cross (includes Ref. 2).....	1
13	3717 104 M1	PIN - roll 3/16" x 1".....	1
14	3717 106 M1	PIN - roll 3/16" x 1-3/8".....	1
15	3717 479 M1	BEARING - side flange.....	1
16	3718 226 M1	SPRING - compression.....	1
17	3717 377 M1	BUSHING - flange 5/8".....	1
18	3718 034 M1	SCREW - 1/4" - 20 x 1/2".....	2
19	3717 076 M1	NUT - 1/4" - 20 flange lock.....	2
20	3718 723 M1	LEVER - travel.....	1
21	3717 066 M1	NUT - 3/8" - 16 flange lock.....	1
22	3718 650 M1	KNOB - travel lever.....	1
23	3718 466 M1	BOLT - 5/16" - 18 x 1-1/4" flange lock.....	1
24	3718 753 M1	NUT - 5/16" - 18 flange lock.....	1

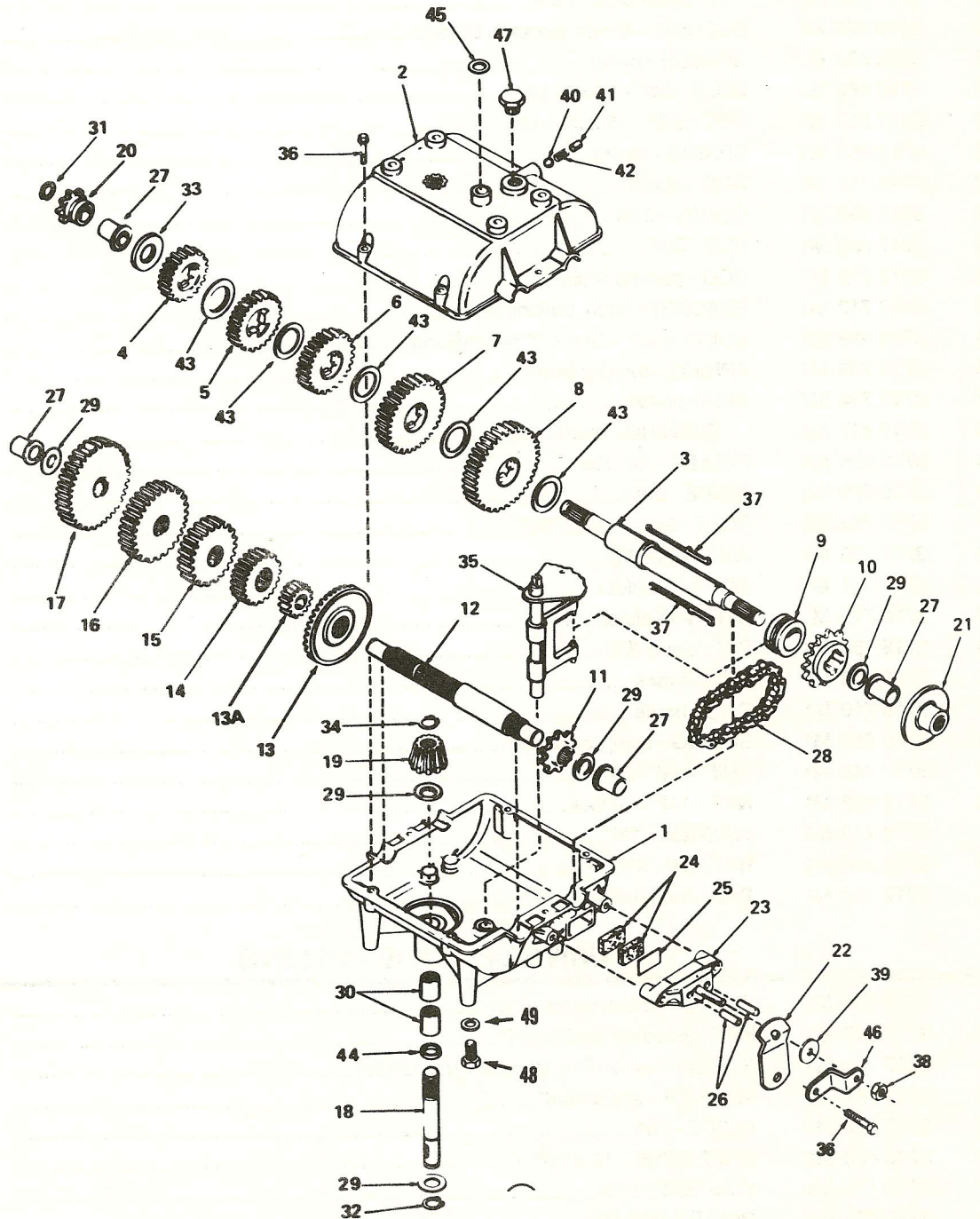
CLUTCH AND BRAKE LINKAGE

REF	PART NO.	DESCRIPTION	NO. REQ'D M-F 80 RT
1	3718 707 M1	PEDAL - foot	1
2	3718 708 M1	LINK - clutch/brake	1
3	3717 156 M1	WASHER - 5/16"	3
4	3717 083 M1	PIN - cotter 3/32" x 3/4"	5
5	3718 678 M1	BUSHING - flange (press in chasis)	2
6	3718 680 M1	SPACER - pedal	1
7	3718 463 M1	BOLT - 3/8" - 16 x 2-3/4"	1
8	3717 066 M1	NUT - 3/8" - 16 flange lock	1
9	3718 653 M1	SPRING - return	1
10	3718 711 M1	ROD - clutch	1
11	3718 260 M1	CLEVIS - 3/8"	1
12	3717 053 M1	NUT - 3/8"	1
13	3718 712 M1	ROD - parking brake	1
14	3718 713 M1	BRACKET - latch, parking brake	1
15	3718 688 M1	BOLT - 5/16" - 18 x 1/2" self-tapping	2
16	3718 752 M1	SPRING - parking brake	1
17	3718 714 M91	ARM - clutch	1
18	3717 417 M1	BUSHING - sleeve	2
19	3718 655 M1	PULLEY - flat idler	1
20	3718 670 M1	GUIDE - belt	1
21	3718 464 M1	BOLT - 3/8" - 16 x 2-1/2"	1
22	3717 158 M1	WASHER - 3/8"	1
23	3717 411 M1	BOLT - shoulder	1
24	3718 715 M1	SPRING - clutch	1
25	3718 159 M1	PIN - clevis 3/8"	1
26	3718 709 M1	LINK - brake	1
27	3718 710 M1	ROD - brake	1
28	3718 666 M1	SPRING - compression	1
29	3717 048 M1	NUT - 1/4" - 20	2
30	3717 059 M1	NUT - 1/4" - 20 lock	1
31	3718 472 M1	WASHER - 1/4"	1
32	3717 369 M1	BUTTON - thumb	1
33	3717 494 M1	PAD - foot, rubber	1

DRIVE BELT AND PULLEYS

1	3718 724 M1	PULLEY - transmission drive	1
2	3717 046 M1	KEY - woodruff 3/16" x 3/4"	1
3	3717 120 M1	SCREW - set 5/16" x 18 x 3/8" (use loctite)	1
4	3717 148 M1	WASHER - spacer 5/8"	1
5	3718 716 M1	GUIDE - belt	1
6	3718 688 M1	BOLT - 5/16" - 18 x 1/2"	3
7	3718 470 M1	WASHER - 5/16"	1
8	3718 655 M1	PULLEY - flat idler	1
9	3718 724 M1	PULLEY - double	1
10	3718 469 M1	WASHER - 7/16" - 20 x 3/4"	1
11	3717 111 M1	BOLT - 7/16" - 20 x 3/4"	1
12	3718 725 M1	BELT - drive	1
13	3718 717 M1	GUIDE - belt	1

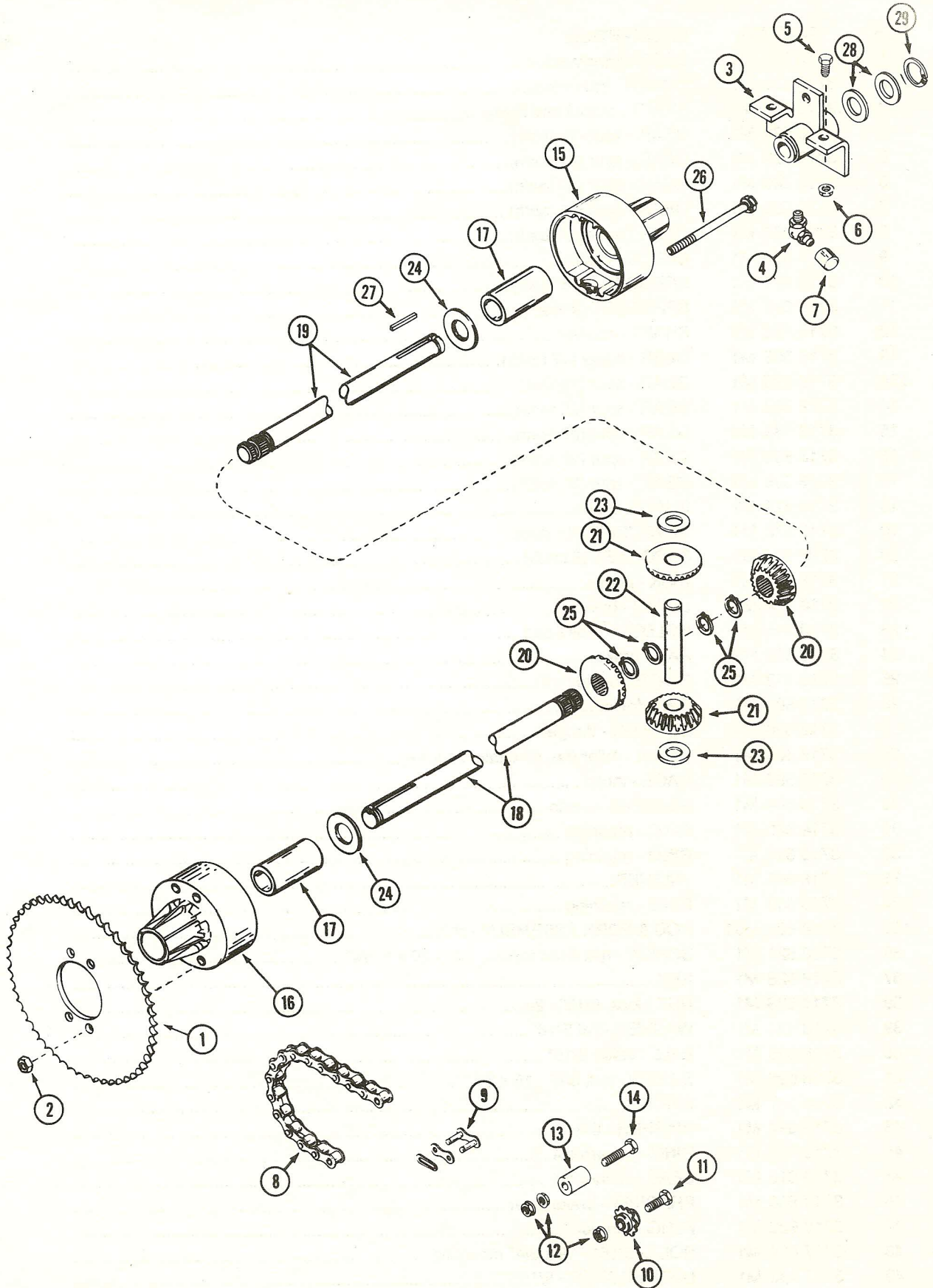
TRANSMISSION



TRANSMISSION

REF	PART NO.	DESCRIPTION	NO. REQ'D M-F 80 RT
1	3718 569 M1	CASE - transmission	1
2	3718 570 M1	COVER - transmission	1
3	3718 575 M1	SHAFT - output and brake	1
4	3718 589 M1	GEAR - spur (19 teeth).....	1
5	3718 579 M1	GEAR - spur (22 teeth).....	1
6	3718 580 M1	GEAR - spur (25 teeth).....	1
7	3718 581 M1	GEAR - spur (30 teeth).....	1
8	3718 587 M1	GEAR - spur (37 teeth).....	1
9	3718 599 M1	COLLAR - shift	1
10	3718 607 M1	SPROCKET (18 teeth)	1
11	3718 606 M1	SPROCKET (9 teeth)	1
12	3718 573 M1	SHAFT - counter	1
13	3718 585 M1	GEAR - bevel (42 teeth).....	1
13A	3718 586 M1	GEAR - spur (12 teeth).....	1
14	3718 582 M1	GEAR - spur (20 teeth).....	1
15	3718 583 M1	GEAR - spur (25 teeth).....	1
16	3718 584 M1	GEAR - spur (28 teeth).....	1
17	3718 588 M1	GEAR - spur (31 teeth).....	1
18	3718 574 M1	SHAFT - input.....	1
19	3718 578 M1	BEVEL PINION - input	1
20	3718 604 M1	SPROCKET (8 teeth)	1
21	3718 611 M1	DISK - brake	1
22	3718 614 M1	LEVER - brake	1
23	3718 615 M1	HOLDER - brake pad	1
24	3718 612 M1	PAD - brake	2
25	3718 613 M1	PLATE - brake pad	1
26	3718 601 M1	PIN - dowel.....	2
27	3718 596 M1	BUSHING - flanged	4
28	3718 605 M1	CHAIN - roller (no. 41 chain, 24 links).....	1
29	3718 592 M1	RACE - thrust	5
30	3718 594 M1	BEARING- needle	2
31	3718 620 M1	RING - retaining	1
32	3718 617 M1	RING - retaining	1
33	3718 598 M1	WASHER.....	1
34	3718 609 M1	RING - retaining	1
35	3718 600 M91	ROD & FORK ASSEMBLY - shift.....	1
36	3718 621 M1	SCREW - hex head taptite, 1/4" - 20 x 1-1/4"	8
37	3718 628 M1	KEY	2
38	3718 623 M1	NUT - lock, 5/16" - 24	1
39	3718 624 M1	WASHER - flat 5/16"	1
40	3718 625 M1	BALL - steel, 5/16".....	1
41	3718 626 M1	SCREW - set, 3/8" - 16 x 3/8"	1
42	3718 627 M1	SPRING.....	1
43	3718 597 M1	WASHER - thrust	5
44	3718 616 M1	RING - square cut	1
45	3718 610 M1	SEAL - square cut	1
46	3718 608 M1	BRACKET - brake lever	1
47	3718 622 M1	PLUG - threaded	1
48	3717 014 M1	BOLT - 5/16" - 18 x 3/4" mounting	4
49	3717 133 M1	LOCKWASHER - 5/16"	1

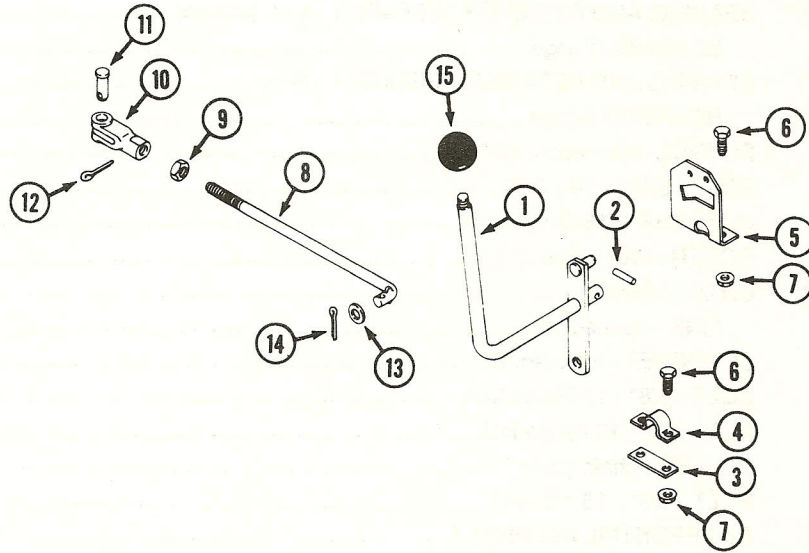
DIFFERENTIAL ASSEMBLY AND DRIVE CHAIN



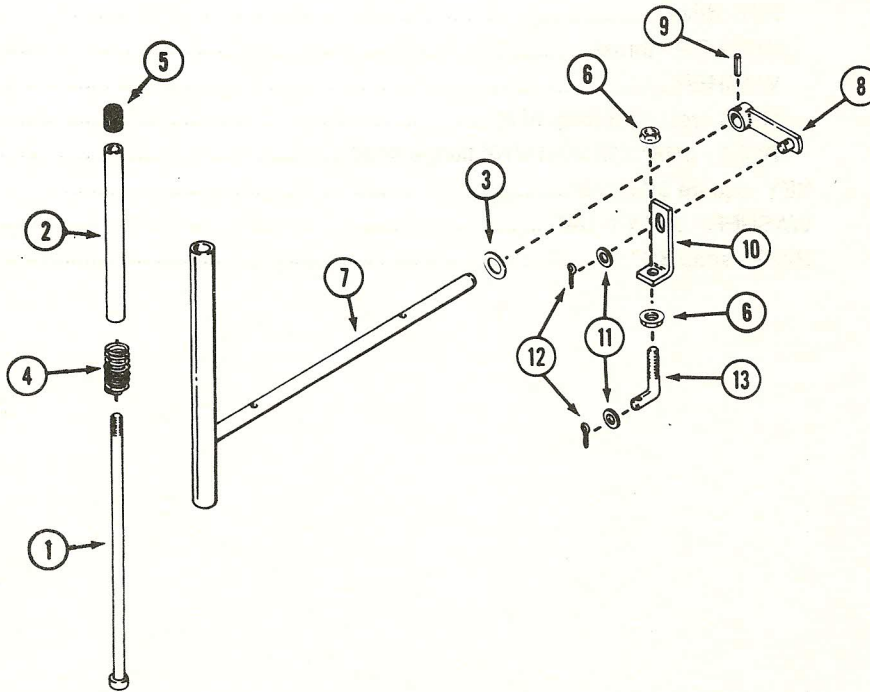
DIFFERENTIAL ASSEMBLY AND DRIVE CHAIN

REF	PART NO.	DESCRIPTION	NO. REQ'D
			M-F 80 RT
1	3718 603 M1	SPROCKET - drive No. 41 (45 teeth)	1
2	3718 619 M1	NUT - 5/16" - 18 lock	4
3	3718 671 M91	BEARING AND RETAINER ASSEMBLY - L.H. (shown)	1
	3718 677 M1	BEARING - flange	2
3	3718 727 M91	BEARING AND RETAINER ASSEMBLY - R.H.	1
	3718 677 M1	BEARING - flange	2
4	3717 190 M1	FITTING - lubrication, 45°	2
5	3717 014 M1	BOLT - 5/16" - 18 x 3/4"	6
6	3718 619 M1	NUT - 5/16" - 18 flange lock	6
7	3717 356 M1	COVER - lubrication fitting	2
8	3719 621 M91	CHAIN - drive	1
9	3719 622 M1	LINK - connector	1
10	3718 727 M1	SPROCKET - idler No. 41	1
11	3717 026 M1	BOLT - 3/8" - 16 flange lock	3
12	3717 077 M1	NUT - 3/8" - 16 flange lock	3
13	3718 681 M1	ROLLER - chain guide	1
14	3718 462 M1	BOLT - 3/8" - 16 x 2-1/4"	1
	3718 460 M91	DIFFERENTIAL ASSEMBLY	1
15	3718 571 M91	HOUSING - differential L.H. (includes Ref. 17)	1
16	3718 576 M91	HOUSING - differential R.H. (includes Ref. 17)	1
17	3718 593 M1	BUSHING - sleeve	2
18	3718 568 M1	AXLE - R.H. 8-19/32" long	1
19	3718 572 M1	AXLE - L.H. 16-7/16" long	1
20	3718 590 M1	GEAR - bevel	2
21	3718 577 M1	GEAR - pinion	2
22	3718 602 M1	PIN - drive	1
23	3718 595 M1	WASHER - thrust	2
24	3718 591 M1	WASHER	2
25	3718 629 M1	RING - retaining (pkg. of 2)	4
26	3718 618 M1	BOLT - 5/16" - 18 x 3-11/16" flange head	4
27	3717 349 M1	KEY -square 3/16" x 2"	2
28	3717 713 M1	WASHER - 3/4" x 1-1/4"	4
29	3717 684 M1	RING - snap 3/4"	2

MOWER DRIVE CONTROL



MOWER HEIGHT AND LIFT CONTROL



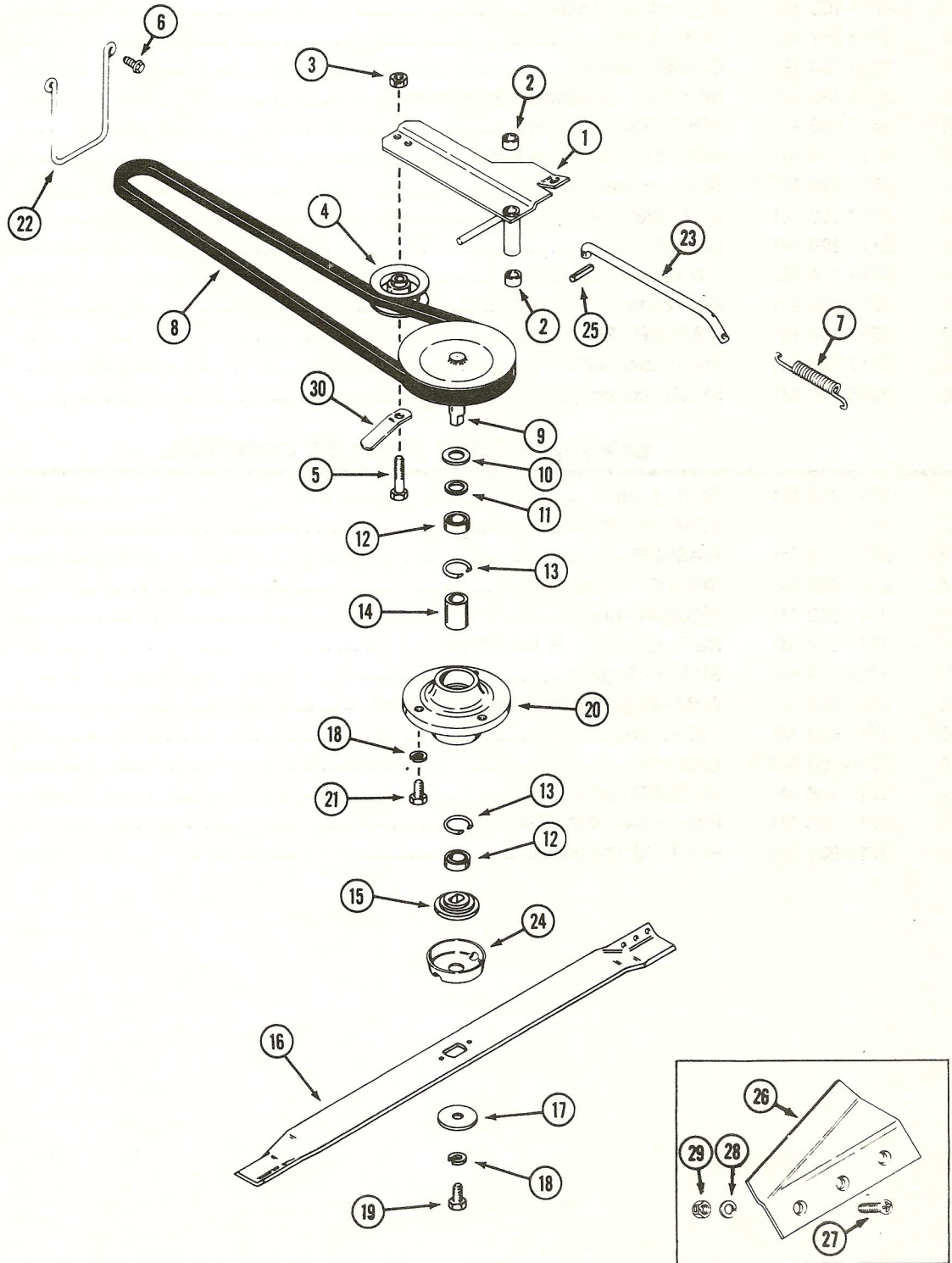
MOWER DRIVE CONTROL

REF	PART NO.	DESCRIPTION	NO. REQ'D M-F 80 RT
1	3718 733 M1	LEVER - mower drive.....	1
2	3717 103 M1	PIN - roll 3/16" x 3/4".....	1
3	3718 757 M1	SHIM - lever.....	1
4	3718 734 M1	CLAMP - saddle.....	2
5	3718 735 M1	BRACKET - interlock switch mounting.....	1
6	3717 033 M1	BOLT - 1/4" - 20 x 3/4".....	4
7	3717 076 M1	NUT - 1/4" - 20 flange lock.....	4
8	3718 736 M1	ROD - mower drive.....	1
9	3717 053 M1	NUT - 3/8" - 24.....	1
10	3718 260 M1	CLEVIS - 3/8".....	1
11	3718 159 M1	PIN - clevis.....	1
12	3717 083 M1	PIN - cotter 3/32" x 3/4".....	1
13	3717 158 M1	WASHER - 3/8".....	2
14	3717 080 M1	PIN - cotter 1/8" x 1".....	1
15	3718 650 M1	KNOB - control.....	1

MOWER HEIGHT AND LIFT CONTROL

1	3719 625 M1	ROD - push.....	1
2	3718 728 M1	SPACER - lift.....	1
3	3717 148 M1	WASHER.....	X
4	3717 395 M1	SPRING - return.....	1
5	3717 369 M1	BUTTON - push.....	1
6	3717 077 M1	NUT - lock 3/8" - 16 hex flange.....	4
7	3718 719 M1	SHAFT - lift pivot.....	1
8	3718 665 M1	ARM - lift (L.H. side mounts in reverse).....	2
9	3717 096 M1	PIN - spirol.....	2
10	3718 664 M1	LINK - lift.....	2
11	3717 156 M1	WASHER - 5/16".....	4
12	3717 083 M1	PIN - cotter 3/32" x 3/4".....	4
13	3718 660 M1	BOLT - "J" link adjust.....	2

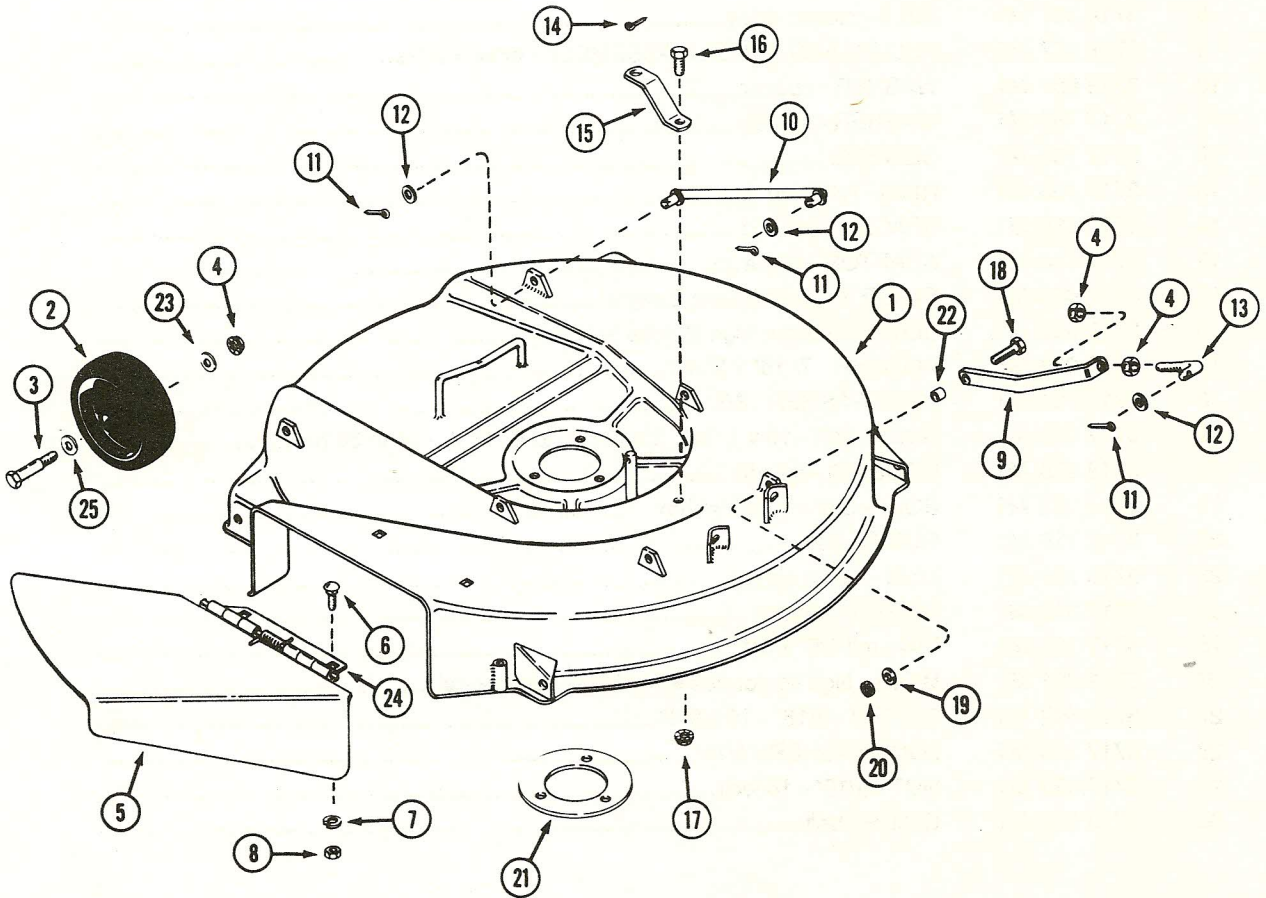
MOWER DRIVE ASSEMBLY



MOWER DRIVE ASSEMBLY

REF	PART NO.	DESCRIPTION	NO. REQ'D M-F 80 RT
1	3718 749 M91	ARM - clutching (including bushing).....	1
2	3717 417 M1	BUSHING - bearing.....	2
3	3717 066 M1	NUT - lock 3/8" - 16 hex, flange	1
4	3718 655 M1	PULLEY - "backside" idler.....	1
5	3717 028 M1	BOLT - 3/8" - 16 x 1-3/4" hex	1
6	3718 687 M1	BOLT - 5/16" - 18 x 3/4" self-tapping	2
7	3718 751 M1	SPRING - tension.....	1
8	3718 661 M1	BELT - mower drive.....	1
9	3718 667 M91	PULLEY AND SPINDLE ASSEMBLY - mower drive.....	1
10	3718 651 M1	WASHER - spacer.....	1
11	3717 769 M1	WASHER - spindle.....	1
12	3717 768 M1	BEARING	2
13	3717 405 M1	RING - retaining	2
14	3718 669 M1	SPACER - bearing	1
15	3717 516 M1	ADAPTOR - blade.....	1
16	3718 654 M1	BLADE - mower (use in Europe).....	1
16	3718 690 M1	BLADE - mower, high lift (use in U.S.A.).....	1
17	3718 000 M1	WASHER - 7/16" x 2"	1
18	3717 134 M1	LOCKWASHER - 3/8"	4
19	3717 032 M1	BOLT - 3/8" - 16 x 1" hex (torque 40 to 43 lb. ft. - 54 to 58 Nm).....	1
20	3718 668 M1	HOUSING - spindle.....	1
21	3717 023 M1	BOLT - 3/8" - 16 x 3/4" hex	3
22	3718 718 M1	GUIDE - belt.....	1
23	3718 750 M1	LINK - clutch spring.....	1
24	3717 518 M1	SHIELD - bearing	1
25	3717 101 M1	PIN - roll 1/8" x 3/4"	1
26	3718 691 M1	WING - high lift (for use when bagging) optional	1
27	3718 692 M1	SCREW - 5/16" - 18 x 3/4"	6
28	3717 133 M1	LOCKWASHER - 5/16"	6
29	3717 069 M1	NUT - 5/16" - 18 lock.....	6
30	3718 670 M1	GUIDE - belt.....	1

MOWER DECK



MOWER DECK

REF	PART NO.	DESCRIPTION	NO. REQ'D M-F 80 RT
1	3718 747 M1	DECK - mower 30"	1
2	3718 746 M1	WHEEL - anti-scalp	4
3	3717 411 M1	BOLT - shoulder	2
4	3717 077 M1	NUT - lock 3/8" hex flange	8
5	3718 675 M1	CHUTE	1
6	3717 003 M1	BOLT - carriage 5/16" - 18 x 3/4"	2
7	3717 133 M1	LOCKWASHER - 5/16"	2
8	3717 049 M1	NUT - 5/16" - 18 hex	2
9	3718 672 M1	LINK - connecting, L.H., front (shown)	1
9	3718 673 M1	LINK - connecting, R.H., front	1
10	3718 684 M1	LINK - rear	2
11	3717 083 M1	PIN - cotter, 3/32" x 3/4"	6
12	3717 158 M1	WASHER - 3/8"	6
13	3718 660 M1	BOLT - "J" level adjust	2
14	3717 080 M1	PIN - cotter 1/8" x 1"	1
15	3718 748 M1	BRACKET - pivot	1
16	3718 461 M1	BOLT - 5/16" - 18 x 1/2"	1
17	3717 072 M1	NUT - 5/16" - 18 flange lock	1
18	3718 465 M1	BOLT - 1/4" - 20 x 1"	2
19	3718 472 M1	WASHER - 1/4"	2
20	3717 061 M1	NUT - lock, 1/4" - 20	2
21	3718 679 M1	PLATE - stiffener	1
22	3718 674 M1	SPACER	2
23	3717 142 M1	WASHER - 3/8" (rear wheels only)	2
24	3718 676 M1	HINGE - pivot	1
25	3717 160 M1	WASHER - 1/2"	4

MASSEY-FERGUSON

