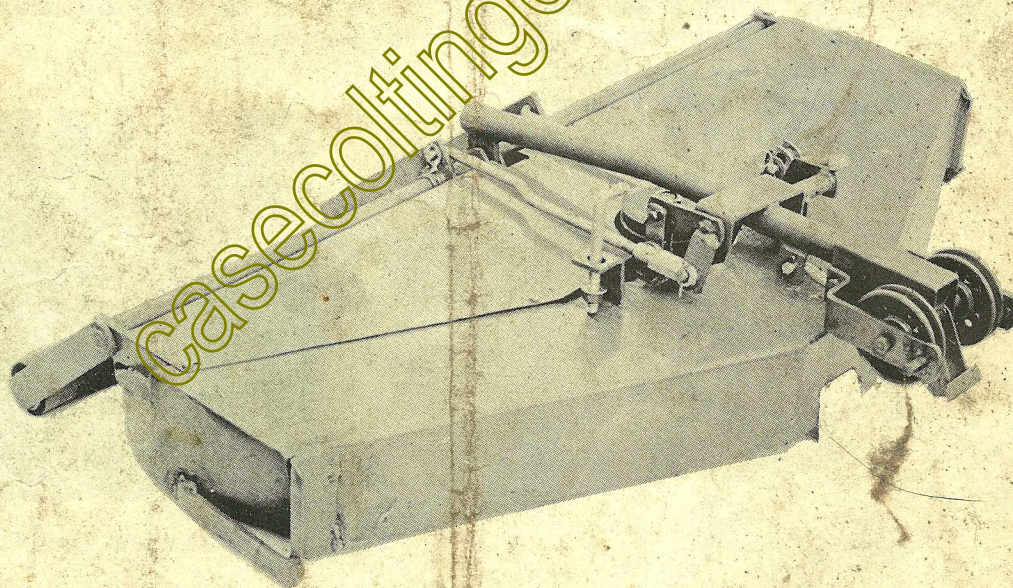


**INSTRUCTIONS FOR
INSTALLING - OPERATING - ADJUSTING
THE
38" AND 44" ROTARY MOWERS
USED ON
CASE 155-195 COMPACT TRACTORS**



NOTE

The J. I. Case Company reserves the right to make improvements in design or changes in specifications at any time without incurring any obligation to install them on units previously sold.

INTRODUCTION

1. This Rotary Mower is precision engineered, carefully manufactured and checked prior to shipment. Proper performance and operational satisfaction is highly dependent on correct initial assembly and adjustment.
2. The Rotary Mower should be assembled to the tractor working on a smooth and level surface. Tractor tire pressures should be at recommended levels.
3. Your Rotary Mower has been preassembled and adjusted to the fullest extent possible in order to reduce your initial installation and adjustment time to an absolute minimum. These instructions

cover all adjustment procedures in the event readjustments are necessary as a result of shipping or disassembly.

4. The items "Right, Left, Front, and Rear" whenever used in this instruction apply to the tractor when facing in the direction the tractor will move in forward operation.

CAUTION

Never attempt to remove, install or make adjustments on the mower while engine is running.

INSTALLATION

1. Attach the two front hanger brackets (A and B, Figure 1) loosely to the forward set of square holes on each side of the tractor frame channels using the four $\frac{3}{8}$ " carriage bolts, lockwashers, and nuts which are connected to the brackets. The bracket (B) with the greater offset is attached to the right hand side of the tractor.

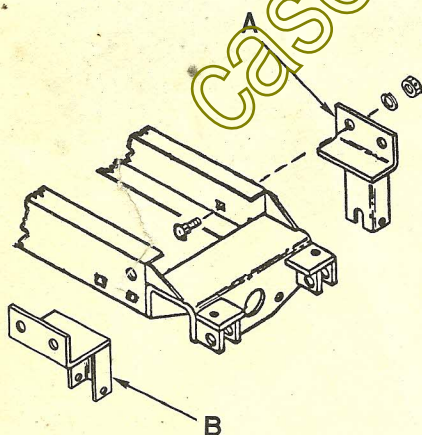


Figure 1. Front Hanger Brackets

3. Install the "V" belt on the attachment drive clutch, Figure 2, and reconnect the linkage to the front of the control rod. Care must be exercised to avoid bending the fan blades.

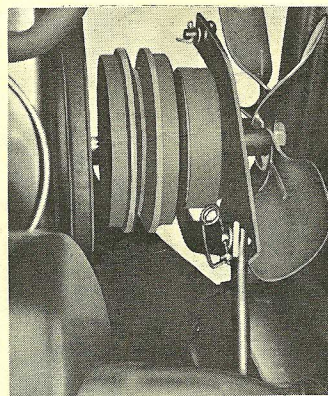


Figure 2. Attachment Drive Clutch

2. Remove the safety pin and clevis pin which connect the tractor attachment drive clutch linkage to the control rod. See Figure 2.

4. For shipping purposes the "L" shaped, right hand hanger link (C, Figure 3) is installed with the drilled end through the mower deck attaching bracket. Remove this rod, insert the shoulder bushing (D) up through the slotted hole in same deck attaching bracket and place the threaded end of the rod down through the bushing. Turn the lock nut (E) part way on to hold the rod in position until further adjusted as covered in paragraph 12.

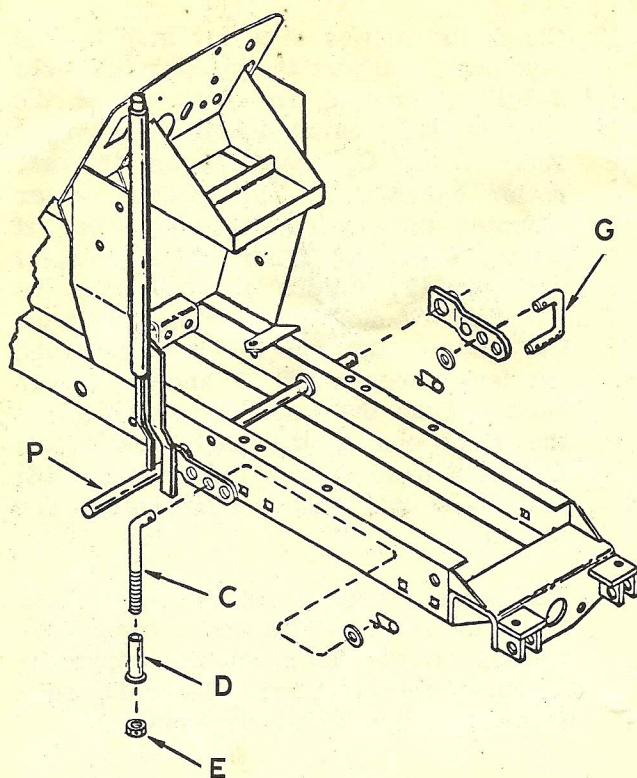


Figure 3. Lift Lever Linkage

5. The roller adjustment stop pin (F, Figure 4) is factory installed in the second from the bottom hole of the left roller pivot arm. This location provides roller to ground engagement for mowing height up to two inches. If a different maximum cutting height adjustment is desired, refer to paragraph 4 under "Adjustments" for proper mounting hole and relocate the stop rod accordingly. Refer to "Adjustments" for further explanation on the roller adjustment stop pin.

IMPORTANT

The stop pin must be located above the mower deck plate.

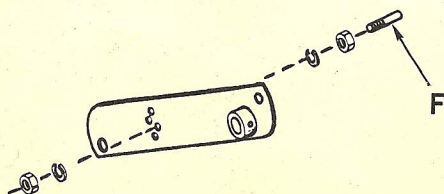


Figure 4. Roller Height Adjustment Stop

6. Position the deck assembly under the tractor.

NOTE With reasonable caution, the tractor front wheels can be driven over the mower deck. A stop should be placed in front of the deck to prevent the deck from sliding when driving the tractor over it.

7. Connect the "L" shaped and "U" shaped hanger links (C and G, Figure 3) to the center holes in the tractor lift lever arms and secure with plain washers and safety pins furnished.
8. Remove the safety pins from the front hanger brackets (A and B, Figure 5) and raise the idler pulley assembly up by pulling back on the tractor lift lever until the pins (H) in the idler pulley support brackets engage in the slots of the hanger brackets. Replace the safety pins and tighten the four carriage bolt nuts on the hanger brackets (A and B).
9. Remove the safety pin from the tensioner housing (J, Figure 5) and pull up on the tensioner lever (K) to release the adjusting rod (L) and nut (M).

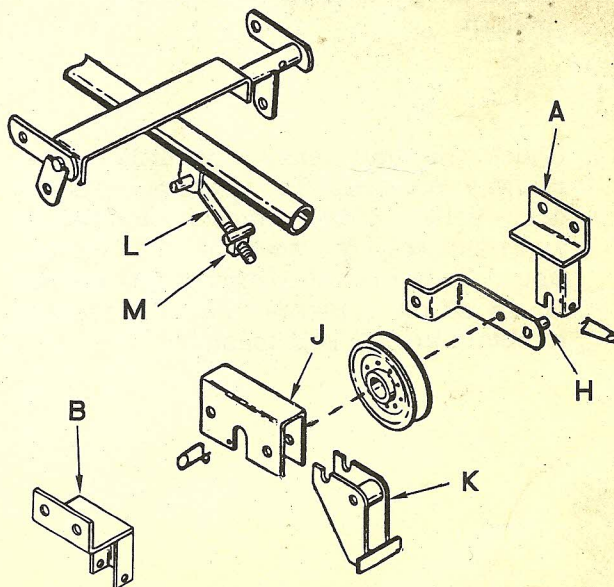


Figure 5. Idler Pulley Assembly and Adjustment

10. Place the drive belt under the idler pulleys and around the mower deck pulley. Position the mower deck as far ahead as possible to facilitate belt installation. Turn the adjusting nut (M) onto the adjusting rod (L) until about $3/4$ " of threads extend beyond the nut, leaving the pin welded to the nut in the upward position. Place the adjusting nut into the slots of the tensioner lever (K). Using foot pressure, push the tensioner lever to the rear until it locks into the tensioner housing (J).



The drive belt furnished with this mower is of special 3V steel wire cord construction to provide maximum life and minimum stretch. Care must be exercised when initially installing and adjusting the tension on this belt not to overtighten or to "rope" it over a pulley when under tension as permanent damage may result.

11. Check the belt tension on either side, midway between the idler pulleys and deck pulley. Recommended tension is approximately 5 pounds at $3/8$ " deflection. Turn the adjusting nut (M) further on or off the adjusting rod as necessary to obtain proper belt tension.

12. Check the mower deck for side to side levelness. Adjust the tractor lift lever J-bolt by turning the wing nut so the deck is being carried on the two hanger links (C and G, Figure 3) and the rear roller assembly. The inboard center mounted anti-scalp roller should be just off the floor, and the roller adjustment stop pin (F, Figure 4) should not be touching the deck plate. Then measure the distance between the left end of the lift lever cross shaft (P) and the mower deck. Take the same measurement at the right end of the shaft, and adjust the right hand hanger link lock nut (E) until both rod end measurements are identical.

13. The mower deck must be level from front to rear. With the mower deck resting off the floor, equally adjust the length of the right and left leveling rods (N and O, Figure 6), if necessary.

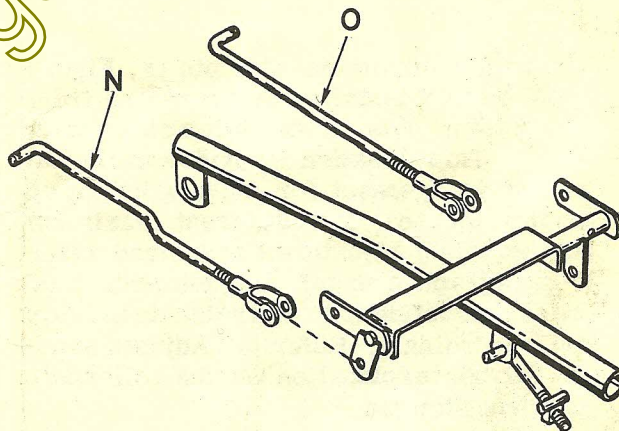


Figure 6. Front to Rear Level Adjustment

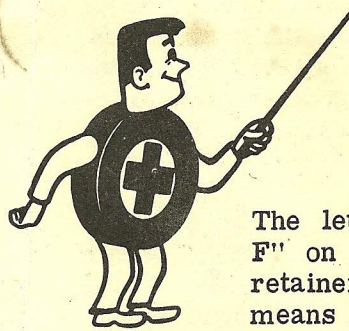
ADJUSTMENTS (CONT'D)

4. Roller Adjustments (Cont'd). Although four hole settings are provided for the stop pin (F, Figure 4), only the upper three are used for normal mowing conditions. The factory setting at the second from the bottom hole will provide roller ground contact at most commonly used lawn mowing heights and also provide adequate ground clearance while in the transport position. The bottom hole setting is not intended to be used on mowers mounted on the Model 195 Compact Tractor.
5. Drive Belt - Although the mower drive belt was properly tensioned by you or your dealer when your mower was installed on the tractor as covered by paragraphs 10 and 11 under "Installation", it should be rechecked after approximately 5 hours of mowing. The belt is properly tensioned when about 5 pounds of finger pressure midway between the two idler pulleys and the mower deck pulley will deflect the belt about $3/8$ ". Normally very limited readjustment of this steel cord belt is ever required.
6. Deck Belt - The deck belt was properly tensioned at the factory before shipment. The tension should be checked after the first 5 hours of mowing as some slack may develop during the initial run-in period. When properly tensioned, about 10 pounds of finger pressure against the back edge of the belt midway between the two rear pulleys will deflect the belt $3/8$ ". Only the left side deck cover need be removed to check and adjust the deck belt tension. To adjust the tension, loosen the nut on the deck idler pulley bracket one turn and apply pressure using a pry bar or lever to the side of the pulley opposite the belt. Be careful not to damage the pulley.

casecoltingersoll.com

ADJUSTMENTS

NOTE This Rotary Mower was adjusted at the factory to the furthest extent possible. The roller height and side to side deck adjustments should have been made during the initial installation. The following instructions are provided for reference in the event readjustments are necessary as a result of mower removal or disassembly.



NOTE

The lettered decal "A through F" on the top of the lift lever retainer housing provides a means of visual reference to the operating height of the mower once the initial adjustment is made and the desired setting is established.

1. Deck "Level" - Front to Rear. The mower is adjusted at the factory to be level, fore and aft. Should readjustment be required, equally adjust the length of the leveling rods (N and O, Figure 6).

To check for proper "level", the mower must be mounted on the tractor and set for desired cutting height. Tire pressures must be correct and equal. Take measurements between a level surface and the mower blades.

2. Deck "Level" - Side to Side. To check for side to side levelness, the mower deck must be set at normal cutting height and be fully supported by the two hanger links (C and G, Figure 3) and the rear roller assembly. The inboard center mounted anti-scalp roller should be just off the floor, and the roller adjustment stop pin (F, Figure 4) should not be touching the deck plate. Then measure the distance between the left end of the lift lever cross shaft (P, Figure 3) and the mower deck. Take the same measurement at the right end of the shaft and adjust the right hand hanger link lock nut (E) until both rod end measurements are identical.

3. Cutting Height. The mower is designed to provide a cutting height range from 1-1/2" to 3-1/2" with infinite adjustment available in between. To increase the cutting height, turn in the lift lever wing nut. To decrease the cutting height, back off on the wing nut.

4. Roller Adjustments. There are four mounting holes in the left roller pivot arm. The roller adjustment stop pin is installed in the second from the bottom hole in the pivot arm. The implement lift lever wing nut should be adjusted so the stop pin (F, Figure 4) contacts the deck plate. This will provide a cutting height of up to 2" before the stop pin contacts the deck plate. Above this cutting height, the stop pin will come in contact with the deck plate and raise the roller assembly off the ground.

Backing off on the lift lever wing nut will reduce the cutting height to a minimum of 1-1/2" at which time the inboard, anti-scalp roller contacts the ground.

By installing the stop pin in the bottom hole, the roller assembly will begin to lift off the ground above 1-1/2" cutting height.

In the third hole, the roller assembly begins to lift off at 2-1/2" cutting height, and in the top hole the assembly begins to lift off the ground at 3".

The greatest range of roller contact is achieved with the stop rod in the bottom hole. Each user should select the setting most suitable for his purposes.

OPERATION

1. Before operating the mower, check the capscrews holding the blades. **THEY MUST BE TIGHT.** After the first 8 hours, check them again. Whenever the blades are removed it is a good practice to install new lockwashers under the capscrews.
2. To achieve clean mowing, a high and constant blade RPM is **IMPORTANT.** Operate the engine at 3/4 to full throttle. At the same time regulate the ground speed according to mowing condition. Unless grass is unusually light, always operate in the low speed range.

If the grass is heavy or long the ground speed should be decreased.



NOTE The ground speed is controlled by the speed control lever on the tractor. The farther this lever is moved in either direction, the faster the tractor will go.

3. The cutting height of the mower ranges from 1-1/2" to 3-1/2". It is controlled by the lift lever and wing nut setting.

NOTE Do not step on the mower deck when getting on or off the tractor. If mounting the tractor from the right side, place right



foot on right foot rest, right hand on steering wheel and left hand on seat back and step onto tractor, swinging left foot through between steering wheel and seat.

When mounting from the left side, start with the left foot on left foot rest, left hand on steering wheel and right hand on seat back and step onto tractor swinging the right foot through between the steering wheel and seat.

Dismount the tractor using the reverse of the above procedures.

4. The tractor implement lever is used to raise or lower the mower and also to hold the mower at any desired cutting height. The wing nut at the base can be turned in or out to set the mower at the desired cutting height. The lettered decals "A through F" provide a means of visual reference to the cutting height of the mower once the initial adjustment is made and the desired setting is established.

When transporting the mower, pull the lift lever back until the catch engages. Depress the button at the top of the lift lever to release and lower the mower to the desired cutting height. A slight pulling pressure on the lever will permit the release button to be more easily depressed.