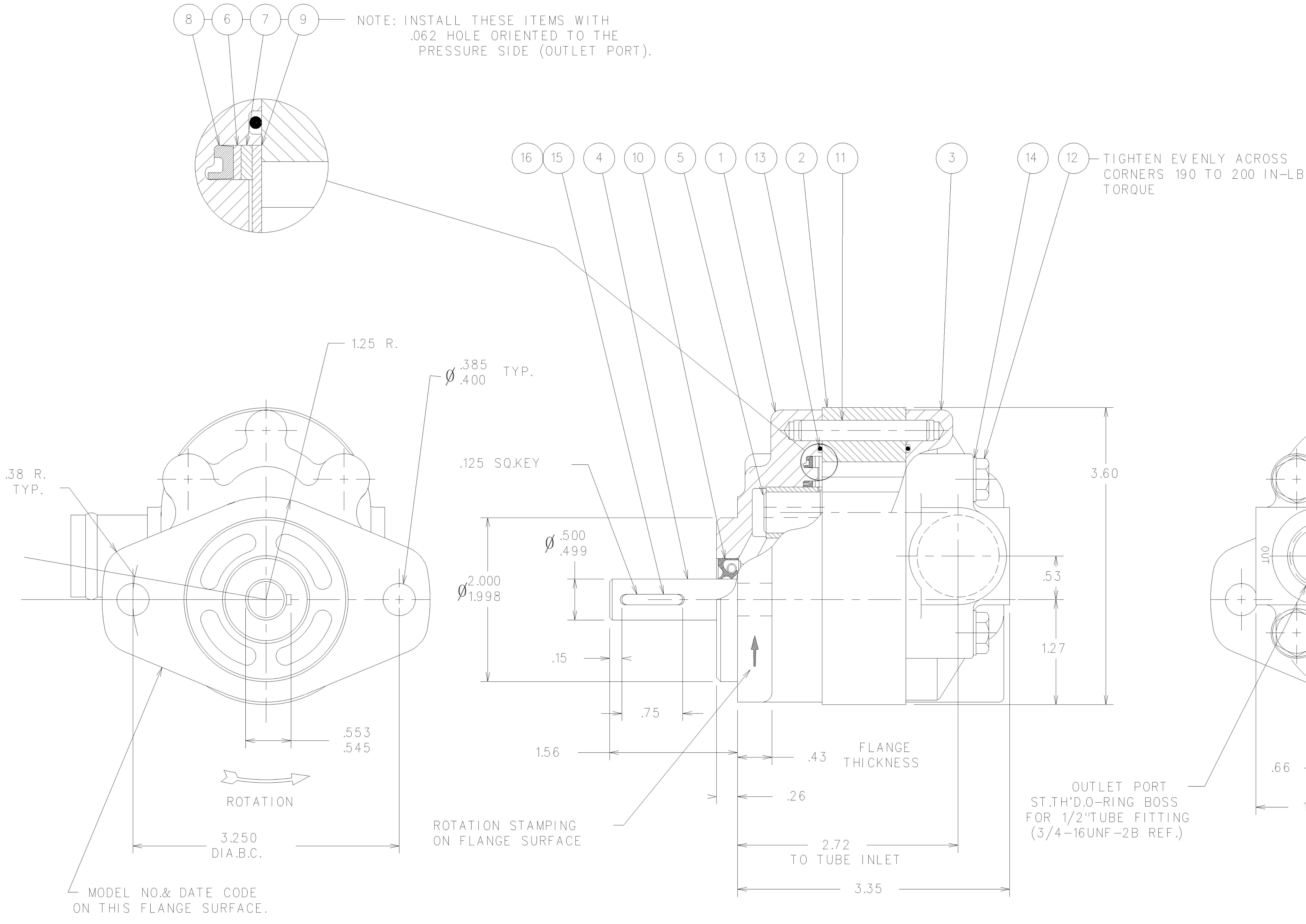



ITEM	PART NUMBER	QTY	DESCRIPTION
1	655276	1	FRONT COVER ASSY.
2	695755	1	CENTER SECTION
3	901447	1	REAR COVER ASSY.
4	815018	1	DRIVE GEAR ASSY.
5	695155	1	DRIVEN GEAR ASSY.
6	655288	1	GASKET
7	655287	1	HEAT SHIELD
8	655273	1	V-SEAL
9	655317	1	WEAR PLATE
10	655279	1	ROTARY LIP SEAL
11	117 X 158	2	DOWEL PIN
12	116 X 32	4	SCREW-HEX HEAD
13	104 X 34A	2	O-RING
14	34 X 143	4	FLAT WASHER
A	726087	1	KEY-SQUARE
16	825611	1	PROTECTIVE CAP
17	120 X 19	1	CAPLUG
18	120 X 27	1	CAPLUG



NOTE:

1. PUMP TO BE TESTED PER W-461.CODE D.
2. STAMP D27X2921,ROTATION ARROW,AND DATE CODE ON FLANGE.

A	130472	WAS 901450		LCB	6/13/95
	127958	RELS TO X2921		BJS	3/10/88
REV	ECR NO	REVISION		CHG BY	DATE
DRAWN BY: STREHLOW	DATE: 3/10/88	 FLUIDPOWER PUMP DIVISION			
APP'D BY:	DATE:				
SCALE:	FULL				
TITLE: PUMP ASSEMBLY - D27X2921 (CCW)					
INGERSOLL		DRAWING NO. MC 901451		REV. A	STATUS SP