

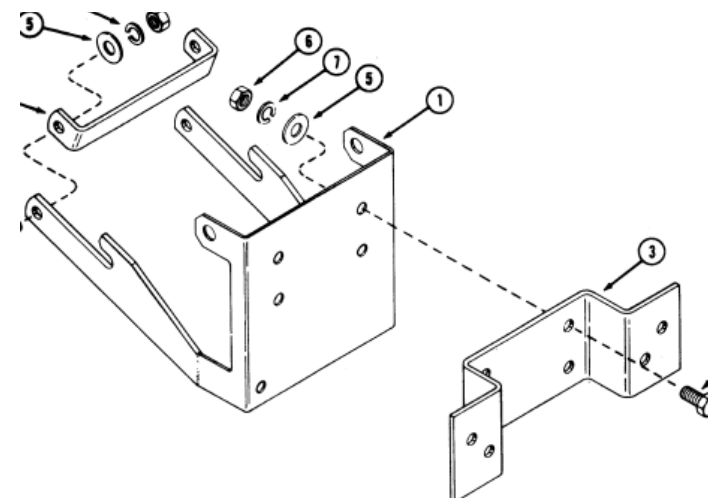
Manufacturer	Model	Type	Weight	Comment	Fits	Picture
Case	D8	Rear Wheel	27 ½ Pounds	200 series GTs	12" Wheels	



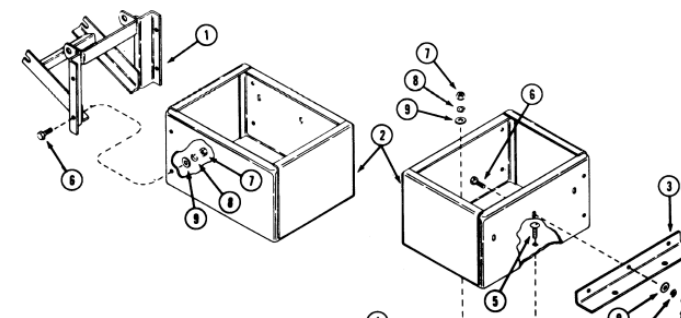
Case	D10	Rear Wheel	37 Pounds	400 series GTs and Loaders	15",16" Wheels	
------	-----	------------	-----------	----------------------------	----------------	--



Case	G14	Rear Weight Box			Lawn Tractors	
Case	H18	Front Weight Bracket		Used to Bolt Case D8 or Garden D10 cast iron weights to front of tractor		



Case	H13	Front or Rear Weight Box		200 and 400 series GTs		
------	-----	--------------------------	--	------------------------	--	--

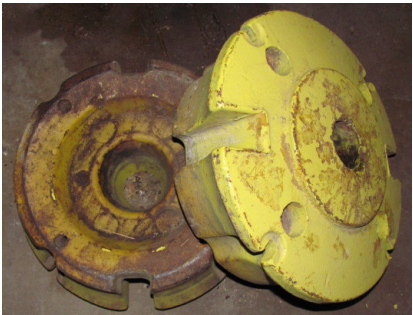


Ingersoll	K-10	Rear wheel		Post 1977 400 Series Plastic Outer Shell		
-----------	------	------------	--	--	--	--

John Deere H78062 Rear Wheel 104 lbs. 2-piece, 400 series GTs 16” Wheels



John Deere Combine 16”
rims H93849 or
H80070 Rear Wheel 162 lbs. 400 series GTs 16” Wheels



Custom	Cast Iron		449.3 Lbs/Cu Ft	
Custom	Steel		487.3 Lbs/Cu Ft	1.1 times weight of Cast Iron
Custom	Lead		706.7 Lbs/Cu Ft	1.6 times weight of Cast Iron
Custom	Concrete		150 Lbs/Cu Ft	1/3 the weight of Cast Iron

Rim Guard	Beet Juice	Liquid tire Ballast	11 lbs/gal	Non-toxic (1.3 Times water Weight)	All tires	Need Air / Water type (all Brass Valve Stems) Freeze-resistant to -35°F
Generic	Calcium Chloride	Liquid tire Ballast	12.51 lbs/gal	Corrosive not recommended (1.5 times water Weight)	_____	MUST use Inner tubes in tires. CaCl is corrosive to metal. Solution at 6 lbs per gallon will slush at - 53 F
Generic	Washer Fluid	Liquid tire Ballast	7.8 ->8.3 lbs/gal	Same weight as Water	All tires	
Generic	Antifreeze	Liquid tire Ballast	Less than 8 lbs/gal	Toxic to Animals Not recommended, same weight as water	_____	