



**Model E Rotary Mower &
D40 Blade & C50 Cart
for Compact Tractors**

Parts Catalog A1060

casecoltingersoll.com

J I Case
A Tenneco Company



**MODEL E38-E44R-E44T
D40-D40R DOZER BLADES
C50 DUMP CART**
Parts Catalog No. A1060

PRICE 75¢

Hi-Liter 2500 6-73 PRINTED IN U.S.A.

ROTARY MOWER, GRADER BLADE AND DUMP CART

**MOWER
SERIAL
NUMBER**



NOTE

The grader blade serial number is located on the back of the mould board. There is no serial number located on the dump cart.

MODEL DESIGNATIONS	TRACTOR APPLICATION		
	155	195	T90
E38 ROTARY MOWER	X		
E44 ROTARY MOWER	X		
E44R ROTARY MOWER		X	
E44T ROTARY MOWER			X
D40 GRADER BLADE	X	(1)	(1)
D40R GRADER BLADE	(1)	X	X
C50 DUMP CART	X	X	X

(1) Will fit, but not recommended.

Indexes

This Parts Catalog is arranged for easy identification of Genuine CASE Service Parts. An alphabetical index is provided at the front of this Catalog to locate the major groups or assemblies. A numerical index at the rear of the Catalog gives the part numbers and the pages on which they are described.

Illustrations

All parts are illustrated in "Exploded Views" which show the individual parts in their normal relationship to each other. Reference numbers are used in the illustrations. These numbers correspond to those in the "Reference Number" column and are followed by the part number, description and quantity required.

Orders

Orders should plainly specify correct part number, full description, quantity required, machine model and engine model, machine and engine serial numbers, method of shipment and shipping address.

Changes

When changes to the machine make it necessary, revised pages for this book will be issued. The revised pages will be issued with the same page number as those they replace and the "issue" number and date will be advanced.

It is imperative that revised Parts Book pages be inserted into their respective Parts Books as soon as received. Failure to do so will lead to confusion and defeat the purpose of the book.

Indented Description

Indented parts in the descriptive list are a part of the preceding assembly or sub-assembly. The quantity shown in the "Number Required" column is the number of parts used on a machine except where parts are indented in descriptive list. In this case the quantity shown is the number required for the preceding assembly or sub-assembly.

REF.	PART NO.	DESCRIPTION	REQ'D
	A 55159	CYLINDER ASSY - rear steering	1
28	A 56208	SOCKET ASSY - rear cylinder	1
29	A 55956	PLUG - adjusting, socket assy	1
30	A 55957	SEAT - socket ball.	2
31	A 56210	SPRING - socket	1
32	A 56209	SEAT - socket spring	1
33	G 45175	CLAMP ASSY - socket assy	1
	16- 836	BOLT - 1/2" x 2-1/4" N.F.hex.	1
34	132- 104	PIN - cotter, 3/16" x 3"	1
35	A 55889	STUD - ball, socket & cylinder	2
36	13- 410	BOLT - 1/4" x 5/8" N.C., hex.	4
37	92- 4	LOCKWASHER - 1/4" SAE	4

Terms "Right Hand" and "Left Hand"

"Right Hand" and "Left Hand" sides of this machine are determined by standing at the rear of the unit and facing in the direction of forward travel.

MOWER SECTION

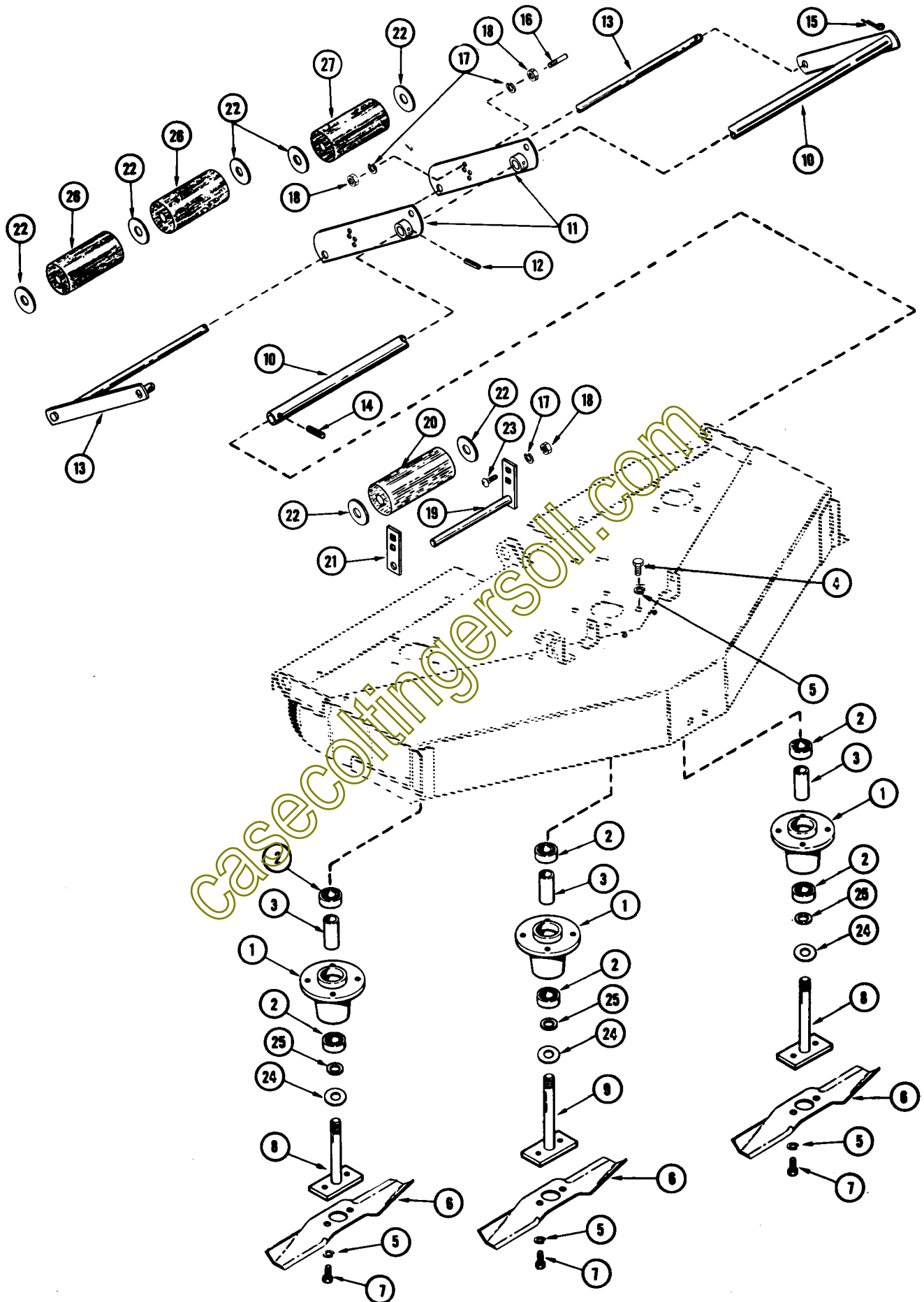
	Page			
	155		195	T90
	E38	E44	E44R	E44T
Belts, Drive	11	13	15	17
Driven.	11	13	15	17
Blades	5	7	9	7
Deck	11	13	15	17
Guards.	11	13	15	17
Housing, Spindle	5	7	9	7
Pulleys	11	13	15	17
Rod, Lift Lever	11	13	15	17
Spindles	5	7	9	7

GRADER SECTION

	Page		
	155	195	T90
	D40	D40R	D40R
Blade.	19	21	21
Carriage	19	21	21
Edge, Cutting	19	21	21
Skids	19	21	21

DUMP CART SECTION

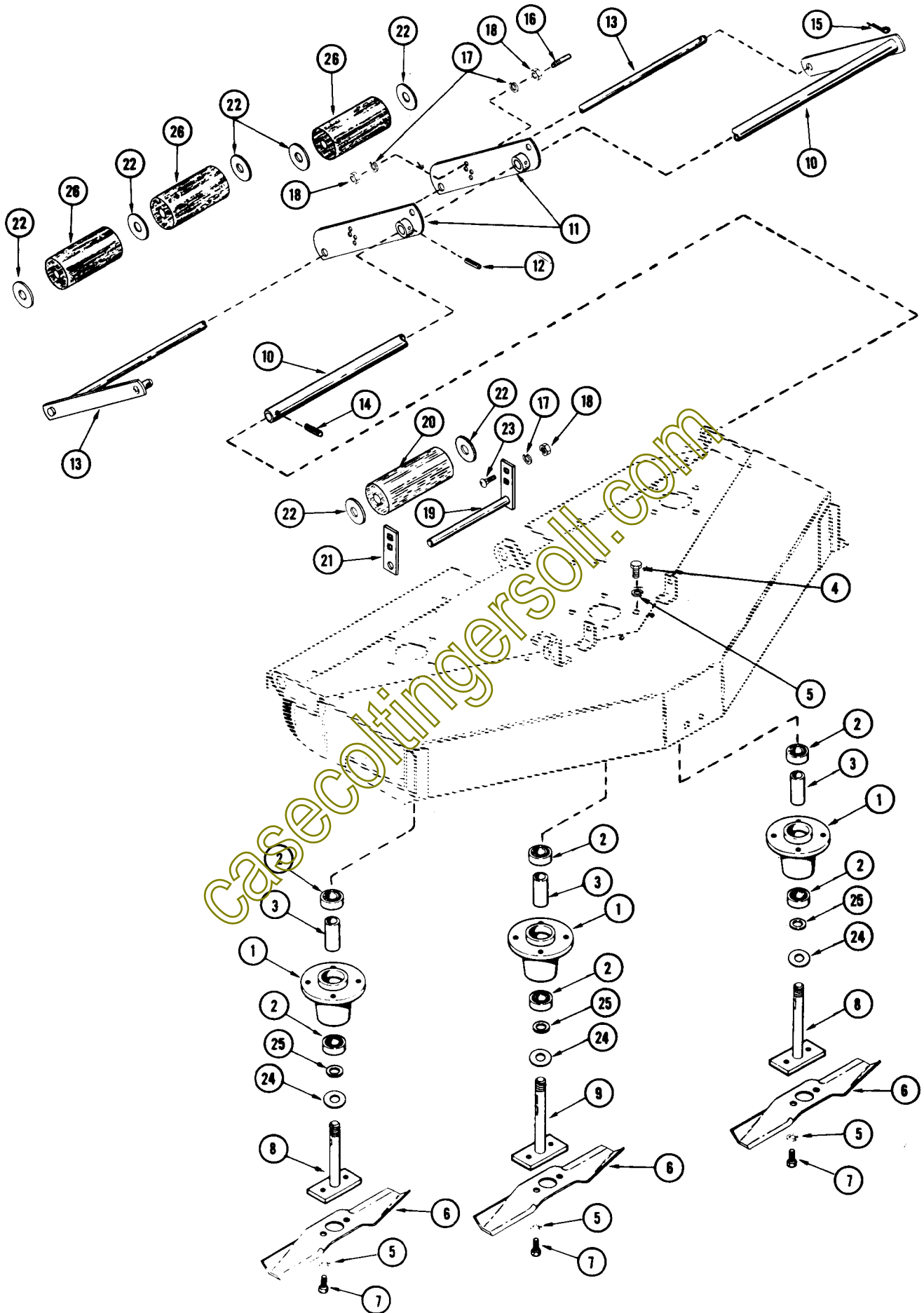
	Page
Dump Cart	23



MODEL E38 ROTARY MOWER

155 GARDEN TRACTOR

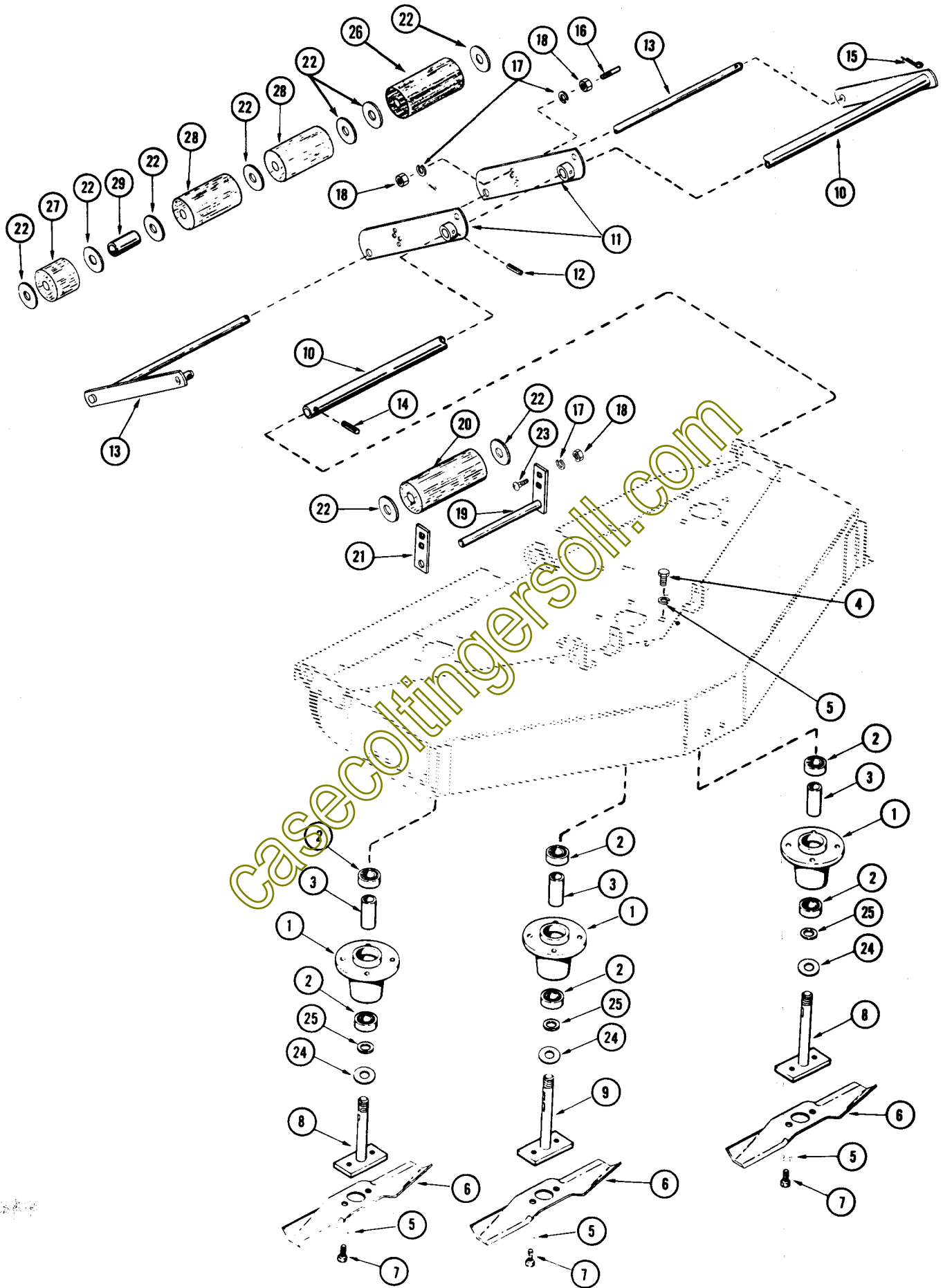
REF.	PART NO.	DESCRIPTION	REQ'D
1	C 10807	HOUSING - mower spindle	3
2	C 10899	BEARING - spindle	6
3	C 10810	SPACER - bearing	3
4	15- 612	BOLT - 3/8" x 3/4" N.C. Hex	12
5	92- 6	LOCKWASHER - 3/8"	18
6	C 12261	BLADE - mower 14"	3
7	115- 206	BOLT - 3/8" x 5/8" N.C. Hex	6
8	C 10808	SPINDLE - outboard	2
9	C 12177	SPINDLE - center	1
10	C 12309	AXLE & ARM - roller lower	1
11	C 12323	LEVER - rear lift	2
12	138- 2033	PIN - spirol roll 1/4" x 1-3/8"	2
13	C 12307	TUBE & ARM - upper, roller support	1
14	138- 2008	PIN - spirol roll 1/4" x 1-1/8"	1
15	132- 310	PIN - cotter 1/8" x 1"	1
16	C 12520	STUD - roller stop	1
17	192- 21	LOCKWASHER - 3/8"	6
18	129- 103	NUT - 3/8"	6
19	C 12311	BRACKET - center roller	1
20	A 70524	ROLLER - center rubber 6-13/16" long	1
21	C 12272	PLATE - rear roller	1
22	195- 108	WASHER - plain 11/16" I.D. 1-3/4" O.D.	12
23	111- 362	BOLT - 3/8" x 1" Rd. Hd. Sq. Neck	4
24	C 10942	WASHER - bearing seal	6
25	C 10822	WASHER - mower spindle	3
26	A 70523	ROLLER - rubber 4-13/16"	6
27	C 12518	ROLLER - rubber 5-13/16"	1



MODEL E44 AND E44T ROTARY MOWER

155 GARDEN TRACTOR AND T-90 UTILITY TRANSPORTER

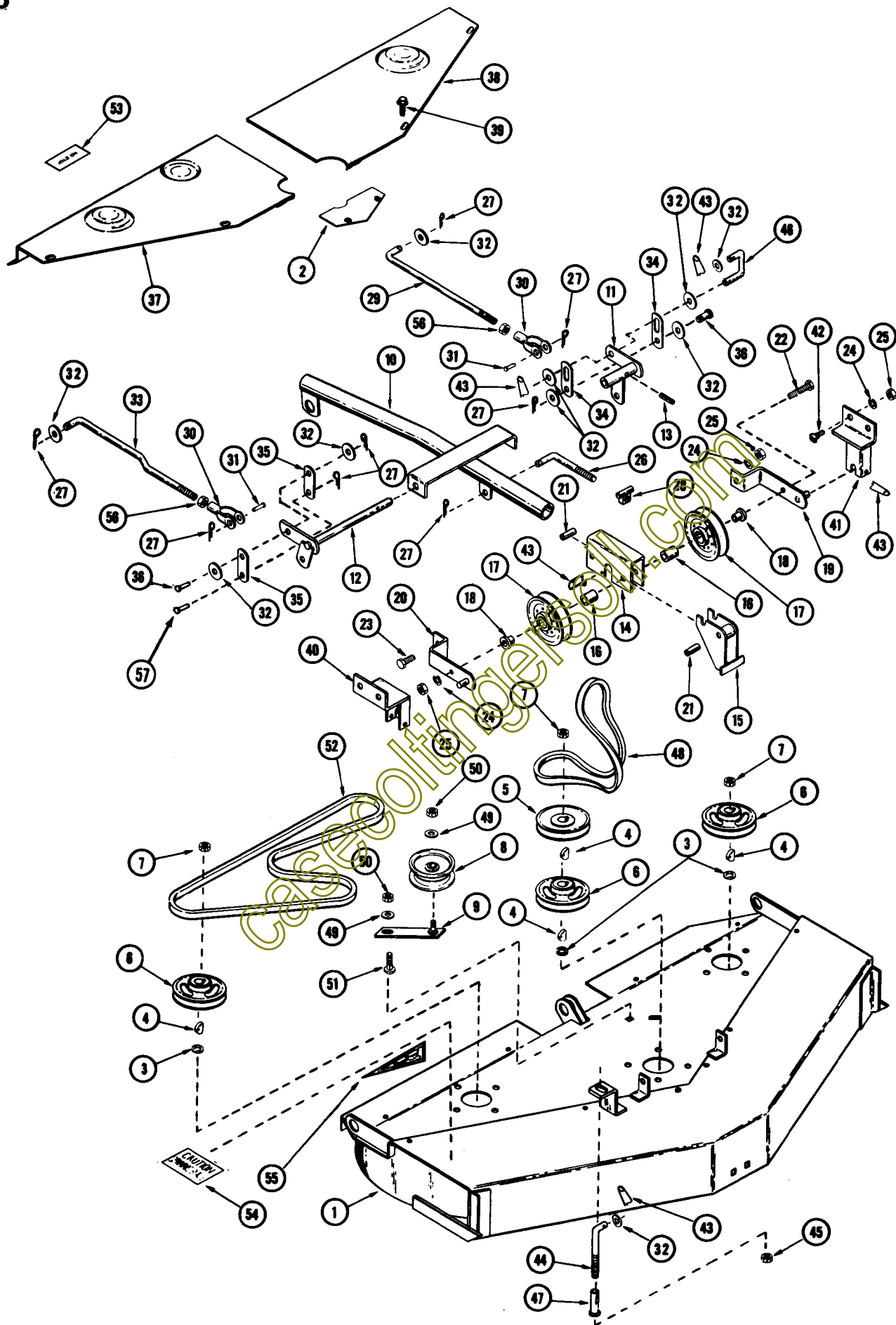
REF.	PART NO.	DESCRIPTION	REQ'D
1	C 10807	HOUSING - mower spindle	3
2	C 10899	BEARING - spindle	6
3	C 10810	SPACER - bearing	3
4	15- 612	BOLT - 3/8" x 3/4" N.C. Hex	12
5	92- 6	LOCKWASHER - 3/8"	18
6	C 12262	BLADE - mower 15-1/2"	3
7	115- 206	BOLT - 3/8" x 5/8" N.C. Hex	6
8	C 10808	SPINDLE - outboard	2
9	C 12177	SPINDLE - center	1
10	C 11992	AXLE & ARM - roller lower	1
11	C 12323	LEVER - rear lift	2
12	138- 2033	PIN - spirol roll 1/4" x 1-3/8"	2
13	C 11990	TUBE & ARM - upper, roller support	1
14	138- 2008	PIN - spirol roll 1/4" x 1-1/8"	1
15	132- 310	PIN - cotter 1/8" x 1"	1
16	C 12520	STUD - roller stop	1
17	192- 21	LOCKWASHER - 3/8"	6
18	129- 103	NUT - 3/8"	6
19	C 12311	BRACKET - center roller	1
20	A 70524	ROLLER - center rubber 6-13/16" long	1
21	C 12272	PLATE - rear roller	1
22	195- 108	WASHER - plain 11/16" I.D., 1-3/4" O.D.	12
23	111- 362	BOLT - 3/8" x 1" N.C. Hex	4
24	C 10942	WASHER - bearing seal	3
25	C 10822	WASHER - mower spindle	3
26	C 12518	ROLLER - rubber 5-13/16"	7



MODEL E44R ROTARY MOWER

195 GARDEN TRACTOR

REF.	PART NO.	DESCRIPTION	REQ'D
1	C 10807	HOUSING - mower spindle	3
2	C 10899	BEARING - spindle	6
3	C 10810	SPACER - bearing	3
4	15- 612	BOLT - 3/8" x 3/4" N.C. Hex	12
5	92- 6	LOCKWASHER - 3/8"	18
6	C 12262	BLADE - mower 15-1/2"	3
7	115- 206	BOLT - 3/8" x 5/8" N.C. Hex	6
8	C 10808	SPINDLE - outboard	2
9	C 12177	SPINDLE - center	1
10	C 11992	AXLE & ARM - roller lower	1
11	C 12323	LEVER - rear lift	2
12	138- 2033	PIN - spirol roll 1/4" x 1-3/8"	2
13	C 11990	TUBE & ARM - upper, roller support	1
14	138- 2008	PIN - spirol roll 1/4" x 1-1/8"	1
15	132- 310	PIN - cotter 1/8" x 1"	1
16	C 12520	STUD - roller stop	1
17	192- 21	LOCKWASHER - 3/8"	6
18	129- 103	NUT - 3/8"	6
19	C 12311	BRACKET - center roller	1
20	A 70524	ROLLER - center, rubber 5-13/16" long	1
21	C 12272	PLATE - rear roller	1
22	195- 108	WASHER - plain 11/16" I.D., 1-3/4" O.D.	14
23	111- 362	BOLT - 3/8" x 1" N.C. Hex	4
24	C 10942	WASHER - bearing seal	3
25	C 10822	WASHER - mower spindle	3
26	C 12518	ROLLER - rubber 5-13/16"	1
27	A 70514	ROLLER - rubber 2-3/8"	2
28	A 70523	ROLLER - rubber 4-13/16"	4
29	C 12266	SPACER - rear roller	2

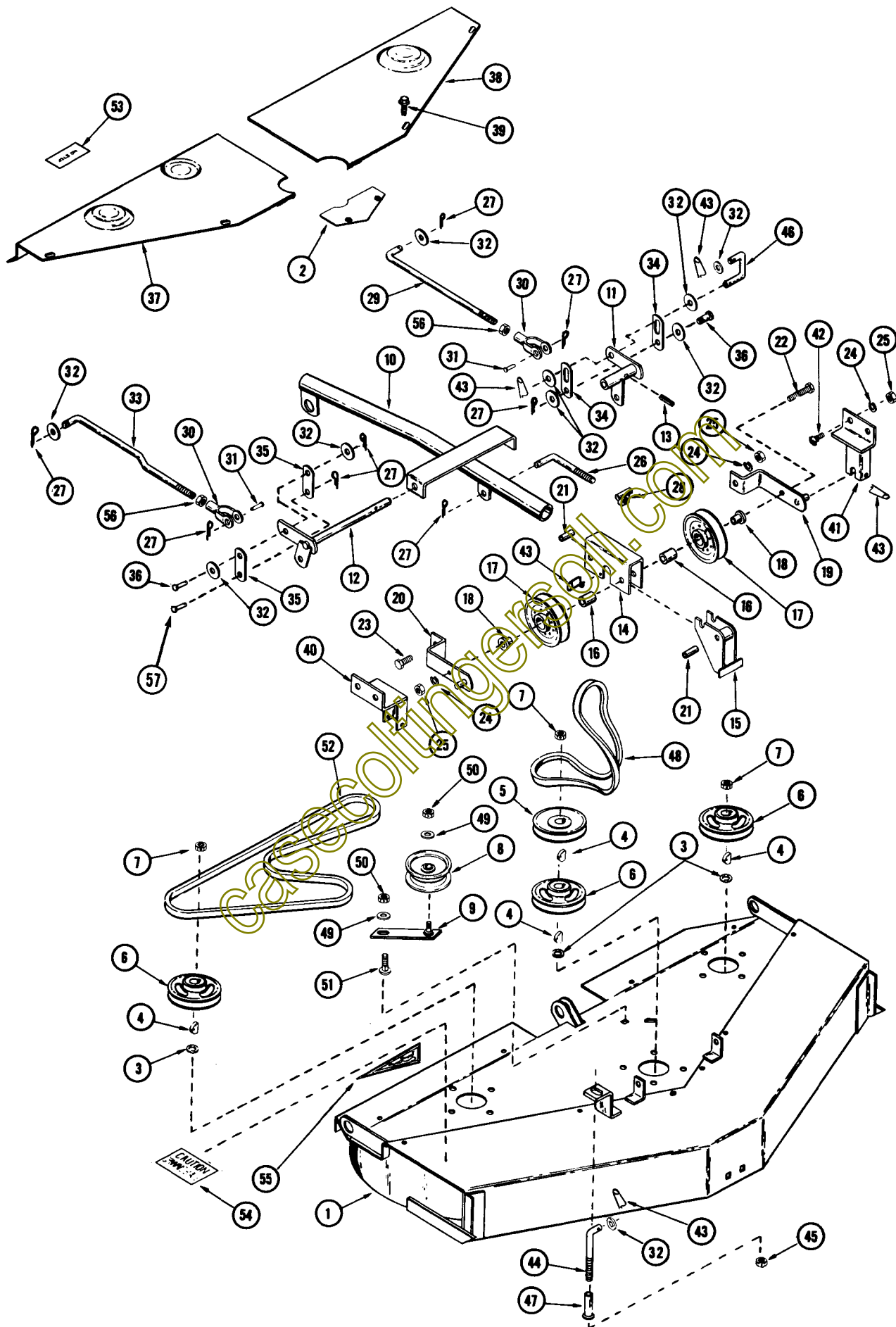


ROTARY MOWER, GRADER BLADE AND DUMP CART MODEL E38 ROTARY MOWER

11

155 GARDEN TRACTOR

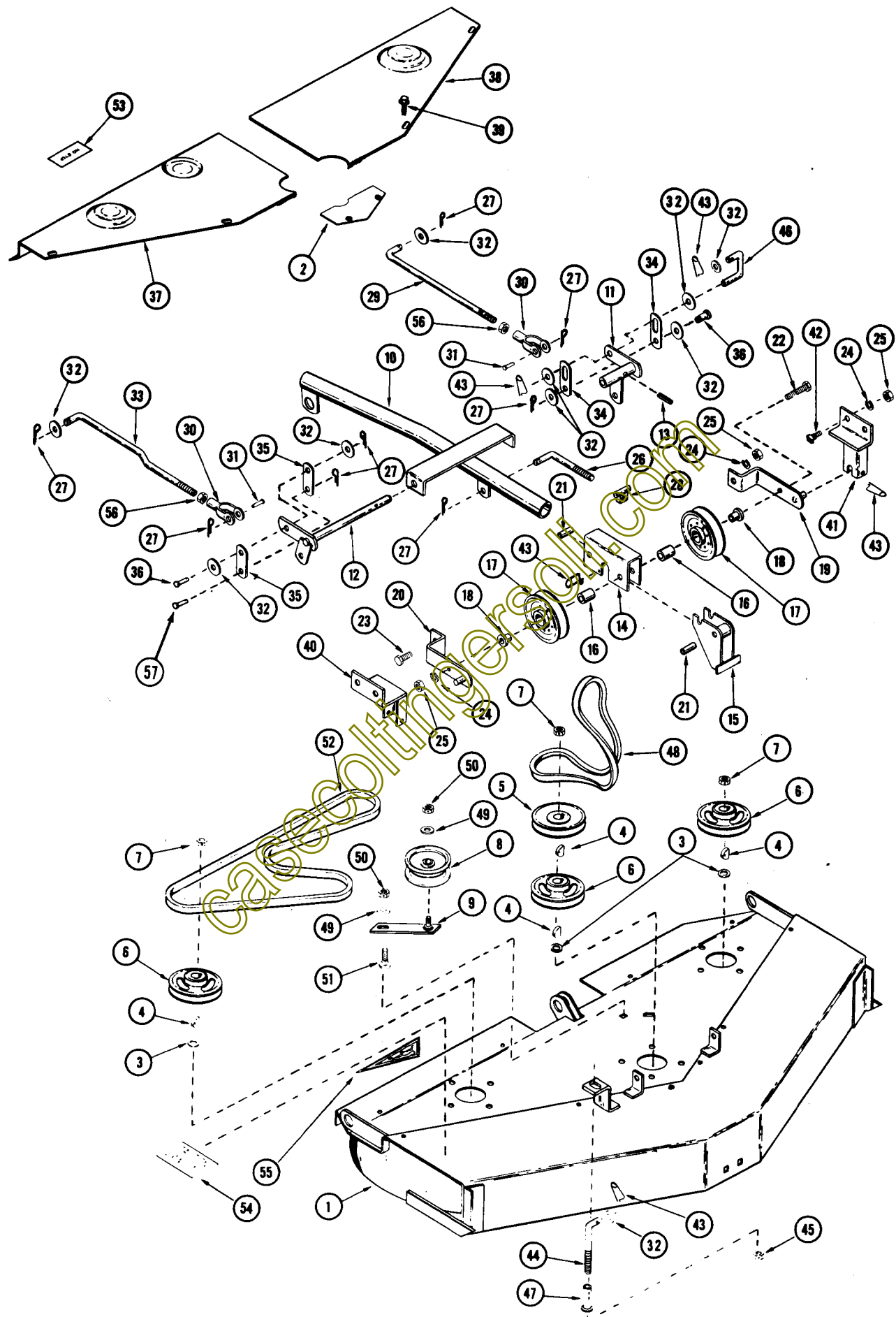
REF.	PART NO.	DESCRIPTION	REQ'D
1	C 12283	DECK - mower E-38	1
2	C 13594	COVER - front deck belt	1
3	C 10822	WASHER - mower spindle	3
4	126- 19	KEY - Woodruff #11	4
5	C 12252	PULLEY - mower drive	1
6	C 12253	PULLEY - mower deck	3
7	131- 172	NUT - Gripco 3/4"-16 Hex	3
8	C 12251	PULLEY - deck idler	1
9	C 12183	BRACKET - idler	1
10	C 12225	FRAME - mower lift	1
11	C 12230	BELLCRANK - lift	1
12	C 12259	LEVER - front lift	1
13	138- 2002	PIN - spirol roll 3/16" x 1-1/4"	1
14	C 12250	CLAMP - tube	1
15	C 12254	LEVER - tensioning	1
16	C 12249	SPACER - idler pulley	2
17	C 10463	PULLEY - idler	2
18	C 12264	BUSHING - idler pulley	2
19	C 12255	BRACKET - idler pulley support L. H.	1
20	C 12256	BRACKET - idler pulley support R. H.	1
21	C 12236	SPACER	2
22	113- 258	BOLT - 3/8" x 6" N.C. Hex	1
23	113- 257	BOLT - 3/8" x 2-1/2" N.C. Hex	1
24	192- 21	LOCKWASHER - 3/8"	6
25	129- 103	NUT - 3/8" N.C. Hex	6
26	C 12242	ROD - tension adjust	1
27	132- 310	PIN - cotter 1/8" x 1"	8
28	C 12239	NUT - adjusting	1
29	C 11985	ROD - leveling L.H.	1
30	C 10952	YOKE	2
31	141- 6	PIN - clevis 1/2"	2
32	195- 530	WASHER - plain 1/2"	10
33	C 12513	ROD - leveling R.H.	1
34	C 12267	LINK - bottom lift L.H.	2
35	C 11984	LINK - center lift	2
36	C 10821	PIN - clevis 1/2" x 7/8"	2
37	C 12364	GUARD - deck belt R.H.	1
38	C 12365	GUARD - deck belt L.H.	1
39	187- 1036	SCREW - 1/4" x 1/2" Self-tapping Hex Head	10
40	C 12218	BRACKET - mower mounting R.H.	1
41	C 12219	BRACKET - mower mounting L.H.	1
42	111- 362	BOLT - 3/8" x 1-1/4" N.C. Rd. Hd. Sq. Neck	4
43	C 10898	PIN - safety	6
44	C 12327	ROD - adjusting lift	1
45	131- 165	NUT - 1/2" N.C. Gripco	1
46	C 12329	ROD - lift link	1
47	C 12571	SLEEVE - lift link	1
48	C 14982	BELT - drive	1
49	195- 522	WASHER - plain 3/8"	2
50	131- 178	NUT - 3/8" N.C. Gripco	2
51	111- 317	BOLT - 3/8" x 7/8" N.C. Rd. Hd. Sq. Neck	1
52	C 12627	BELT - mower deck	1
53	C 12519	DECAL - no step	2
54	A 70404	DECAL - caution spinning blade	2
55	C 12664	DECAL - ASA safety	2
56	129- 105	NUT - 1/2" N.C. Hex	2
57	C 14265	PIN - clevis 1/2"	1



MODEL E44 ROTARY MOWER

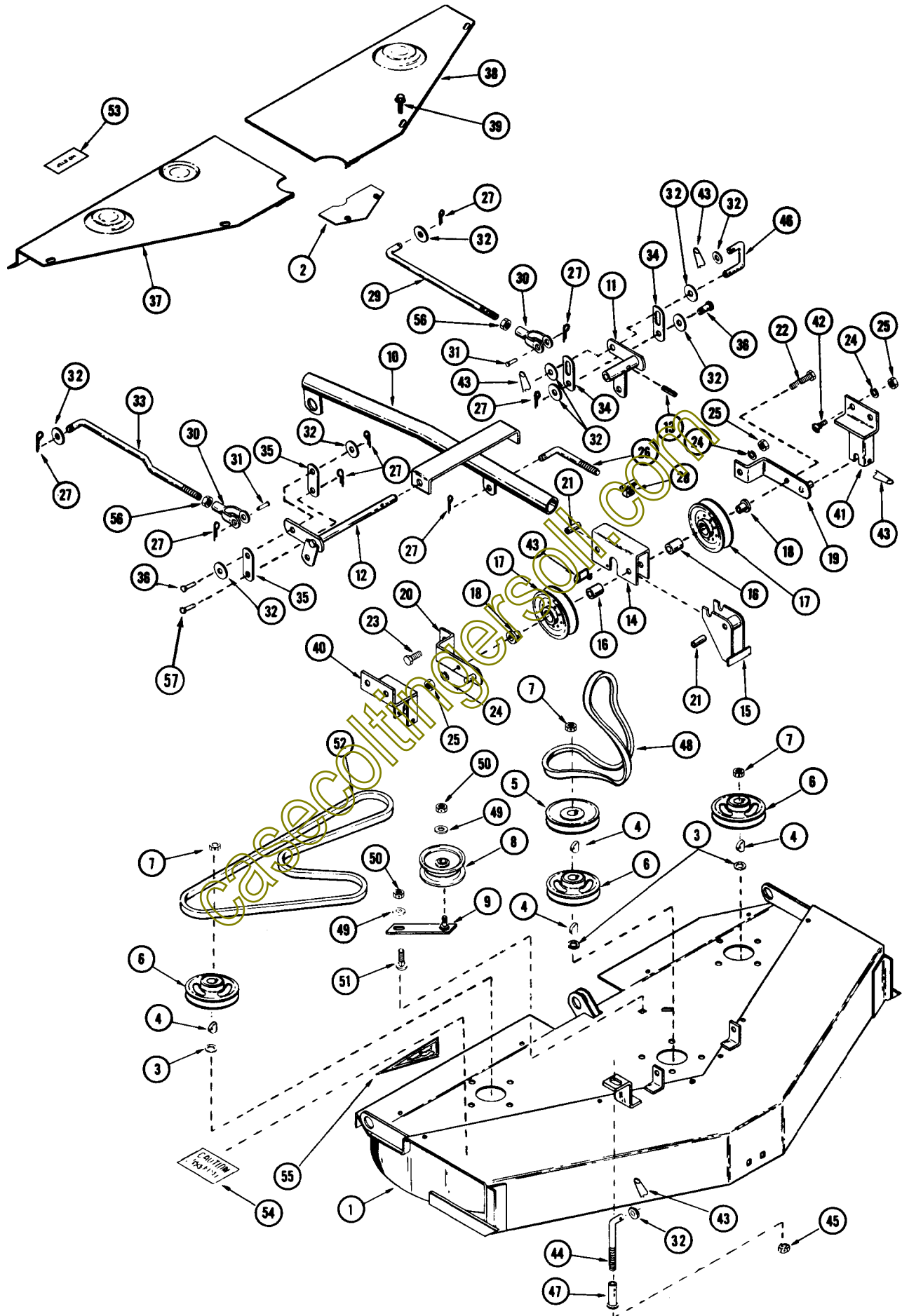
155 GARDEN TRACTOR

REF.	PART NO.	DESCRIPTION	REQ'D
1	C 12169	DECK - mower E-44	1
2	C 13594	COVER - front deck belt	1
3	C 10822	WASHER - mower spindle	3
4	126- 19	KEY - Woodruff #11	4
5	C 12252	PULLEY - mower drive	1
6	C 12253	PULLEY - mower deck	3
7	131- 172	NUT - Gripco 3/4"-16 Hex	3
8	C 12251	PULLEY - deck idler	1
9	C 12183	BRACKET - idler	1
10	C 12225	FRAME - mower lift	1
11	C 12230	BELLCRANK - lift	1
12	C 12259	LEVER - front lift	1
13	138- 2002	PIN - spirol roll 3/16" x 1-1/4"	1
14	C 12250	CLAMP - tube	1
15	C 12254	LEVER - belt tension	1
16	C 12249	SPACER - idler pulley	2
17	C 10463	PULLEY - idler	2
18	C 12264	BUSHING - idler pulley	2
19	C 12255	BRACKET - pivot L.H.	1
20	C 12256	BRACKET - pivot R.H.	1
21	C 12236	SPACER	2
22	113- 258	BOLT - 3/8" x 6" N.C. Hex	1
23	113- 257	BOLT - 3/8" x 2-1/2" N.C. Hex	1
24	192- 21	LOCKWASHER - 3/8"	6
25	129- 103	NUT - 3/8" N.C. Hex	6
26	C 12242	ROD - belt adjust	1
27	132- 310	PIN - cotter 1/8" x 1"	8
28	C 12239	NUT - adjusting	1
29	C 11985	ROD - front to rear lift L.H.	1
30	C 10952	YOKE	2
31	141- 6	PIN - clevis 1/2"	2
32	195- 530	WASHER - plain 1/2"	10
33	C 12513	ROD - front to rear lift R.H.	1
34	C 12267	LINK - bottom lift L.H.	2
35	C 11984	LINK - center lift	2
36	C 10821	PIN - clevis 1/2" x 7/8"	2
37	C 12278	GUARD - deck belt R.H.	1
38	C 12279	GUARD - deck belt L.H.	1
39	187- 1036	SCREW - 1/4" x 1/2" Self-tapping Hex Head	10
40	C 12218	BRACKET - mower mounting R.H.	1
41	C 12219	BRACKET - mower mounting L.H.	1
42	111- 362	BOLT - 3/8" x 1-1/4" N.C. Rd. Hd. Sq. Neck	4
43	C 10898	PIN - safety	6
44	C 12327	ROD - adjusting lift	1
45	131- 165	NUT - 1/2" N.C. Gripco	1
46	C 12329	ROD - lift link	1
47	C 12571	SLEEVE - lift link	1
48	C 14982	BELT - drive	1
49	195- 522	WASHER - plain 3/8"	2
50	131- 178	NUT - 3/8" N.C. Gripco	2
51	111- 317	BOLT - 3/8" x 7/8" N.C. Rd. Hd. Sq. Neck	1
52	C 10919	BELT - mower deck	1
53	C 12519	DECAL - no step	2
54	A 70404	DECAL - caution	2
55	C 12664	DECAL - ASA safety	2
56	129- 105	NUT - 1/2" N.C. Hex	2
57	C 14265	PIN - clevis 1/2"	1



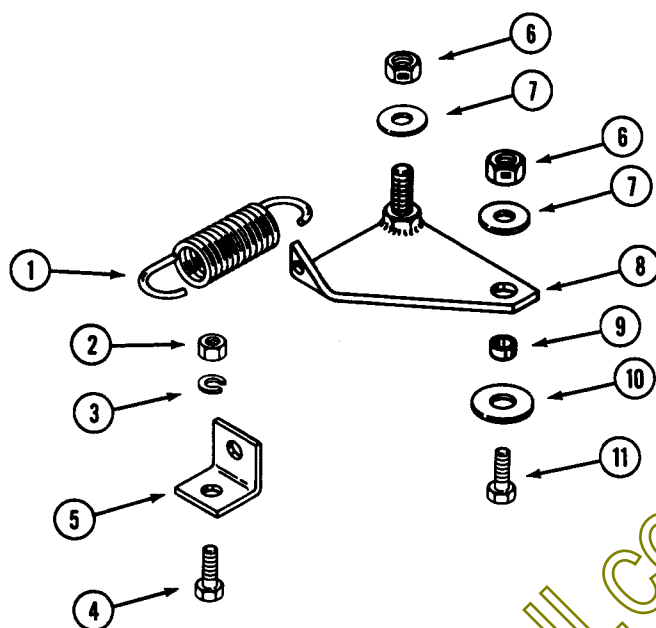
MODEL E44R ROTARY MOWER

REF.	PART NO.	DESCRIPTION	REQ'D
1	C 12169	DECK - mower E-44	1
2	C 13594	COVER - front deck belt	1
3	C 10822	WASHER - mower spindle	3
4	126- 19	KEY - Woodruff #11	4
5	C 12252	PULLEY - mower drive	1
6	C 12253	PULLEY - mower deck	3
7	131- 172	NUT - Gripco 3/4"-16 Hex	3
8	C 12251	PULLEY - deck idler	1
9	C 12183	BRACKET - idler	1
10	C 12225	FRAME - mower lift	1
11	C 12230	BELLCRANK - lift	1
12	C 12259	LEVER - front lift	1
13	138- 2002	PIN - spirol roll 3/16" x 1-1/4"	1
14	C 12250	CLAMP - tube	1
15	C 12254	SPACER - idler pulley	1
16	C 12249	PULLEY - idler pulley	2
17	C 10463	PULLEY - idler	2
18	C 12264	BUSHING - idler pulley	2
19	C 12255	BRACKET - idler pulley support L.H.	1
20	C 12256	BRACKET - idler pulley support R.H.	1
21	C 12236	SPACER	2
22	113- 258	BOLT - 3/8" x 6" N.C. Hex	1
23	113- 257	BOLT - 3/8" x 2-1/2" N.C. Hex	1
24	192- 21	LOCKWASHER - 3/8"	6
25	129- 103	NUT - 3/8" N.C. Hex	6
26	C 12242	ROD - belt adjust	1
27	132- 310	PIN - cotter 1/8" x 1"	8
28	C 12239	NUT - adjusting	1
29	C 11985	ROD - leveling L.H.	1
30	C 10952	YOKE	2
31	141- 6	PIN - clevis 1/2"	2
32	195- 530	WASHER - plain 1/2"	10
33	C 12513	ROD - R.H.	1
34	C 12267	LINK - leveling L.H.	2
35	C 11984	LINK - center lift	2
36	C 10821	PIN - clevis 1/2" x 7/8"	2
37	C 12276	GUARD - deck belt R.H.	1
38	C 12279	GUARD - deck belt L.H.	1
39	187- 1036	SCREW - 1/4" x 1/2" Self-tapping Hex Head	10
40	C 12281	BRACKET - mower mounting R.H.	1
41	C 12282	BRACKET - mower mounting L.H.	1
42	111- 362	BOLT - 3/8" x 1-1/4" N.C. Rd. Hd. Sq. Neck	4
43	C 10898	PIN - safety	6
44	C 12328	ROD - adjusting lift	1
45	131- 165	NUT - 1/2" N.C. Gripco	1
46	C 12330	ROD - lift link	1
47	C 12571	SLEEVE - lift link	1
48	C 14894	BELT - drive	1
49	195- 522	WASHER - plain 3/8"	2
50	131- 178	NUT - 3/8" N.C. Gripco	2
51	111- 317	BOLT - 3/8" x 7/8" N.C. Rd. Hd. Sq. Neck	1
52	C 10919	BELT - mower deck	1
53	C 12519	DECAL - no step	2
54	A 70404	DECAL - caution	2
55	C 12664	DECAL - ASA safety	2
56	129- 105	NUT - 1/2" N.C. Hex	2
57	C 14265	PIN - clevis 1/2"	1



MODEL E44T ROTARY MOWER
T-90 UTILITY TRANSPORTER

REF.	PART NO.	DESCRIPTION	REQ'D
1	C 12169	DECK - mower E-44	1
2	C 13594	COVER - front deck belt	1
3	C 10822	WASHER - mower spindle	3
4	126- 19	KEY - Woodruff #11	4
5	C 12252	PULLEY - mower drive	1
6	C 12253	PULLEY - mower deck	3
7	131- 172	NUT - Gripco 3/4"-16 Hex	3
8	C 12251	PULLEY - deck idler	1
9	C 12183	BRACKET - idler	1
10	C 12590	FRAME - mower lift	1
11	C 12230	BELLCRANK - lift	1
12	C 12259	LEVER - front lift	1
13	138- 2002	PIN - spirol roll 3/16" x 1-1/4"	1
14	C 12250	CLAMP - tube	1
15	C 12254	LEVER - tensioning	1
16	C 12249	SPACER - idler pulley	2
17	C 10463	PULLEY - idler	2
18	C 12264	BUSHING - idler pulley	2
19	C 12255	BRACKET - idler pulley support L.H.	1
20	C 12256	BRACKET - idler pulley support R.H.	1
21	C 12236	SPACER	2
22	113- 258	BOLT - 3/8" x 6" N.C. Hex	1
23	113- 257	BOLT - 3/8" x 2-1/2" N.C. Hex	1
24	192- 21	LOCKWASHER - 3/8"	6
25	129- 103	NUT - 3/8" N.C. Hex	6
26	C 12591	ROD - belt adjust	1
27	132- 310	PIN - cotter 1/8" x 1"	8
28	C 12239	NUT - adjusting	1
29	C 11985	ROD - leveling L.H.	1
30	C 10952	YOKE	2
31	141- 6	PIN - clevis 1/2"	2
32	195- 530	WASHER - plain 1/2"	10
33	C 12513	ROD - R.H.	1
34	C 12267	LINK - leveling L.H.	2
35	C 11984	LINK - center lift	2
36	C 10821	PIN - clevis 1/2" x 7/8"	2
37	C 12276	GUARD - deck belt R.H.	1
38	C 12279	GUARD - deck belt L.H.	1
39	187- 1036	SCREW - 1/4" x 1/2" Self-tapping Hex Head	10
40	C 12585	BRACKET - mower mounting R.H.	1
41	C 12586	BRACKET - mower mounting L.H.	1
42	111- 362	BOLT - 3/8" x 1-1/4" N.C. Rd. Hd. Sq. Neck	4
43	C 10898	PIN - safety	6
44	C 12592	ROD - adjusting lift	1
45	131- 165	NUT - 1/2" N.C. Gripco	1
46	C 12593	ROD - lift link	1
47	C 12571	SLEEVE - lift link	1
48	C 14894	BELT - drive	1
49	195- 522	WASHER - plain 3/8"	2
50	131- 178	NUT - 3/8" N.C. Gripco	2
51	111- 317	BOLT - 3/8" x 7/8" N.C. Rd. Hd. Sq. Neck	1
52	C 10919	BELT - mower deck	1
53	C 12519	DECAL - no step	2
54	A 70404	DECAL - caution	2
55	C 12664	DECAL - ASA safety	2
56	129- 105	NUT - 1/2" N.C. Hex	2
57	C 14265	PIN - clevis 1/2"	1



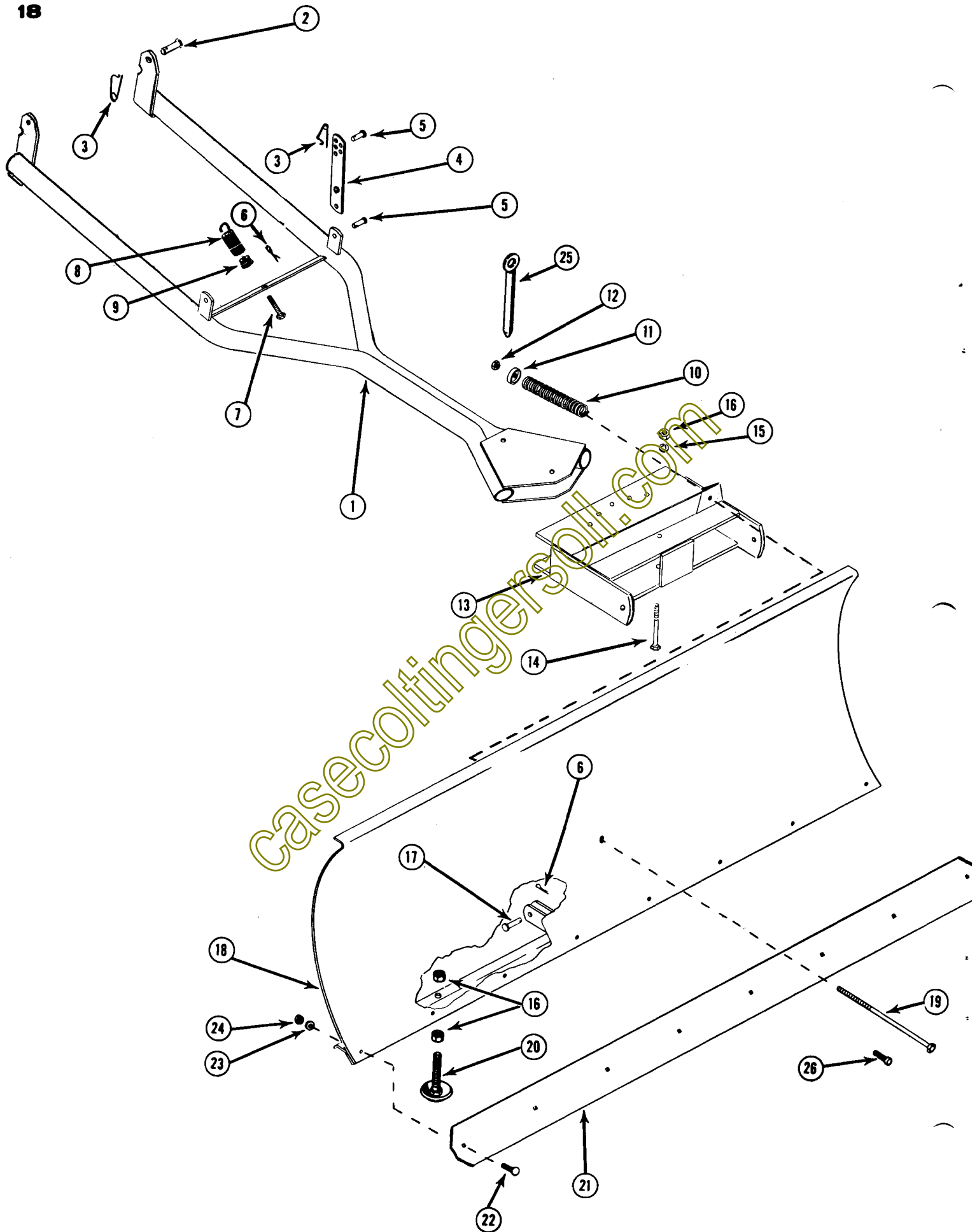
casecoltingersoll.com

C15081 DECK IDLER KIT

FOR "E" SERIES MOWERS

REF. PART NO.	DESCRIPTION	REQ'D
C 15081	KIT - deck idler	1
1 C 14482	SPRING - lift	1
2 129- 102	NUT - 5/16" NC hex ZP	1
3 192- 20	LOCKWASHER - 5/16" ZP	1
4 113- 102	BOLT - 5/16" x 3/4" NC hex ZP	1
5 C 15077	BRACKET - spring anchor	1
6 131- 178	NUT - lock 3/8" NC hex ZP	2
7 195- 522	WASHER - plain 3/8" ZP	2
8 C 14731	BRACKET - idler	1
9 C 14768	SPACER	1
10 195- 530	WASHER - plain 1/2" ZP	1
11 113- 207	BOLT - 3/8" x 1" NC hex ZP	1

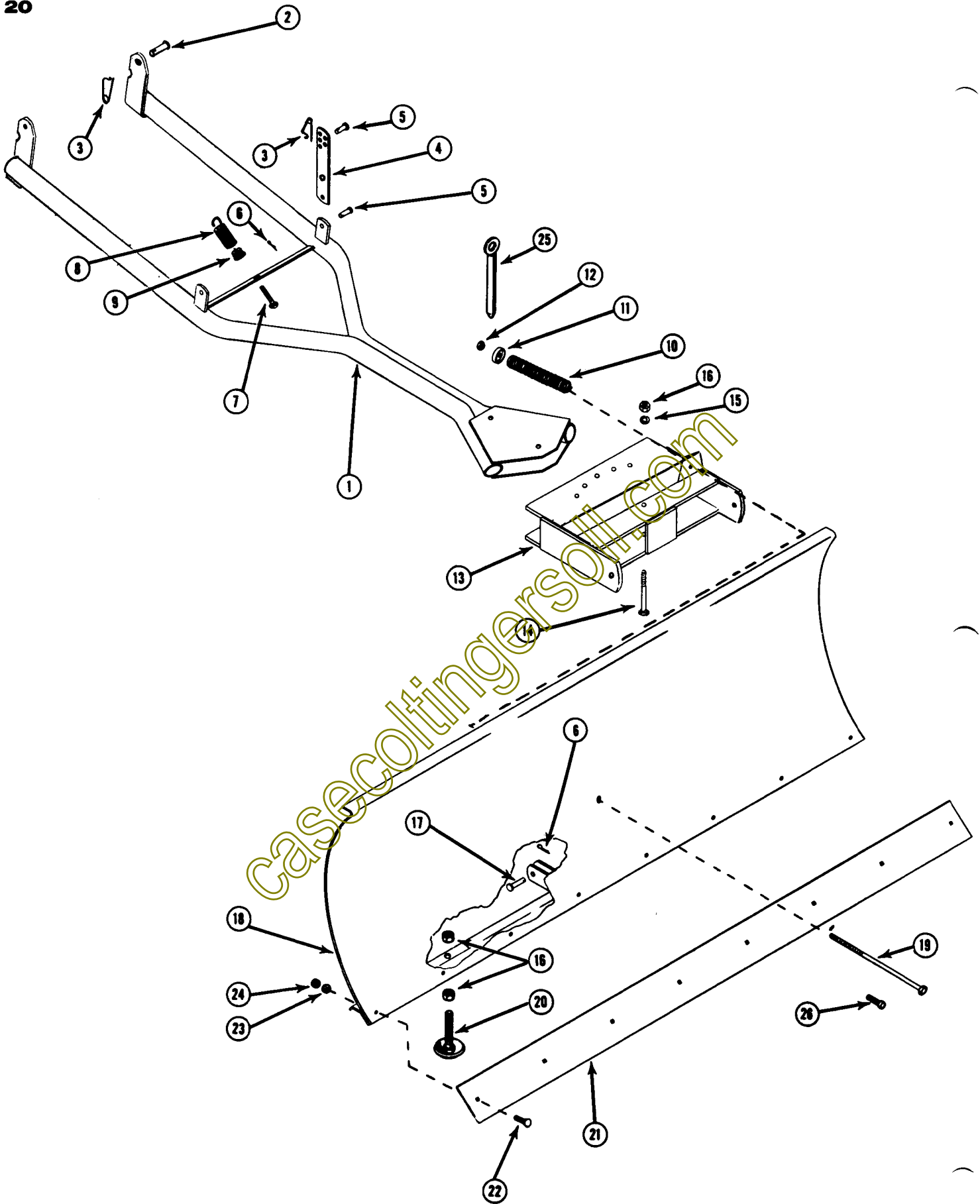
casecoltingersoll.com



MODEL D40 GRADER BLADE

155 GARDEN TRACTOR

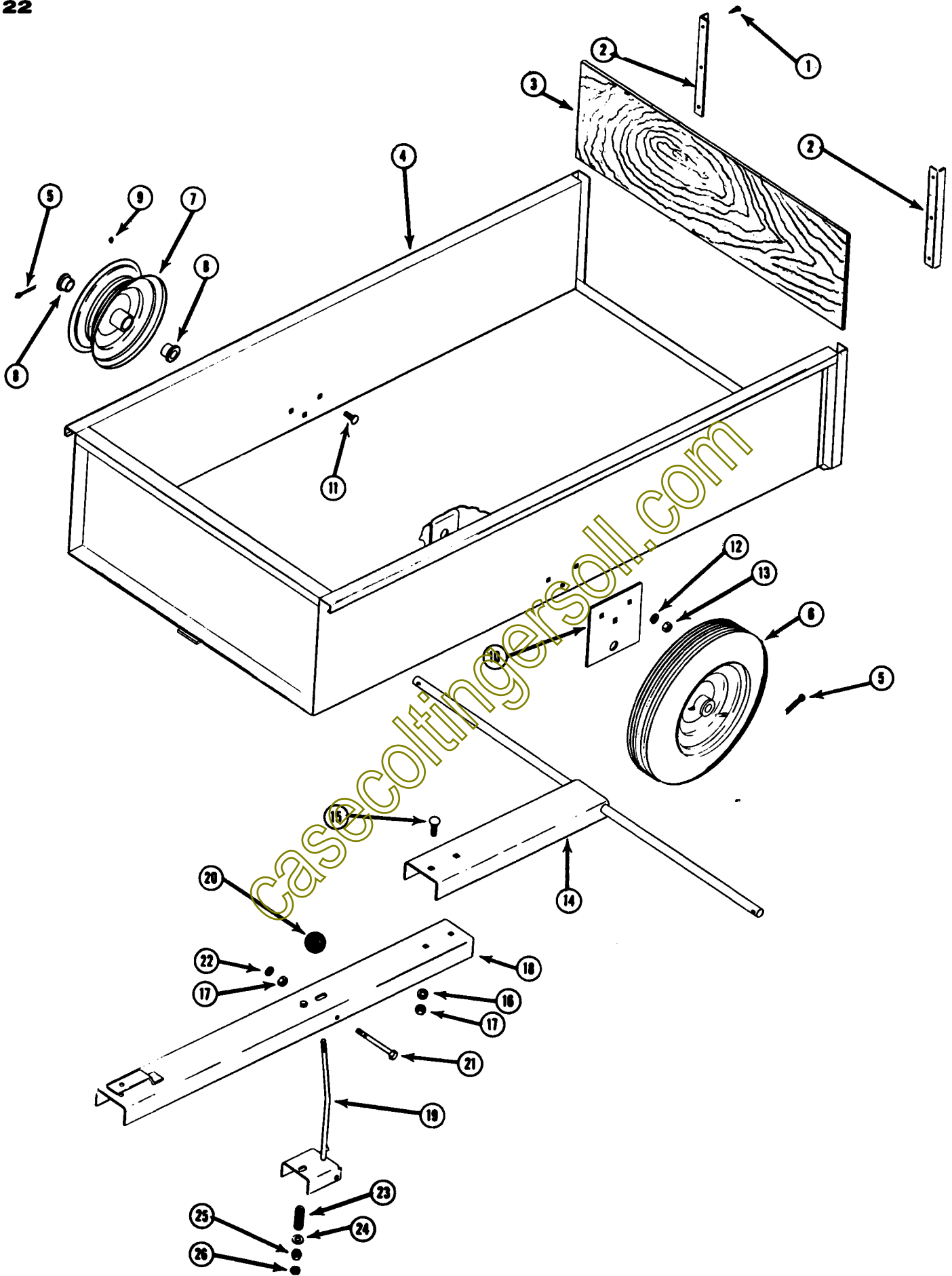
REF.	PART NO.	DESCRIPTION	REQ'D
1	C 10850	FRAME - grader	1
2	C 10820	PIN - clevis - 5/8"	2
3	C 10898	PIN - safety	4
4	C 12887	LINK - grader lift	2
5	C 10821	PIN - clevis - 1/2"	4
6	132- 48	PIN - cotter - 1/8" x 1"	4
7	C 10967	BOLT - 3/8" x 3" hex head	1
8	C 10966	SPRING - extension	1
9	C 10965	PLUG - spring adjustment	1
10	C 10921	SPRING - compression	1
11	C 10896	WASHER - cup	1
12	129- 103	NUT - 3/8"-16 N. C.	1
13	C 10873	WELDMENT - blade pivot	1
14	15- 856	BOLT - 1/2" x 3-1/2" N. C.	1
15	92- 8	WASHER - 1/2" SAE std. lock	1
16	25- 108	NUT - 1/2"-13 N. C.	5
17	141- 56	PIN - clevis - 1/2"	2
18	C 10870	BLADE - 44" grader	1
19	C 11049	BOLT - 3/8" x 10" N. C. ZP	1
20	C 10968	SHOE - grader	2
21	C 10871	BLADE - 44" scraper	1
22	11- 516	BOLT - 5/16" x 1" round head	9
23	92- 5	WASHER - 5/16" SAE std. lock	9
24	25- 105	NUT - 5/16"-18 hex	9
25	C 10888	PIN - locking	1
26	111- 342	BOLT - 3/8" x 1" round head, square neck	1



MODEL D40R GRADER BLADE

195 GARDEN TRACTOR AND T-90 UTILITY TRANSPORTER

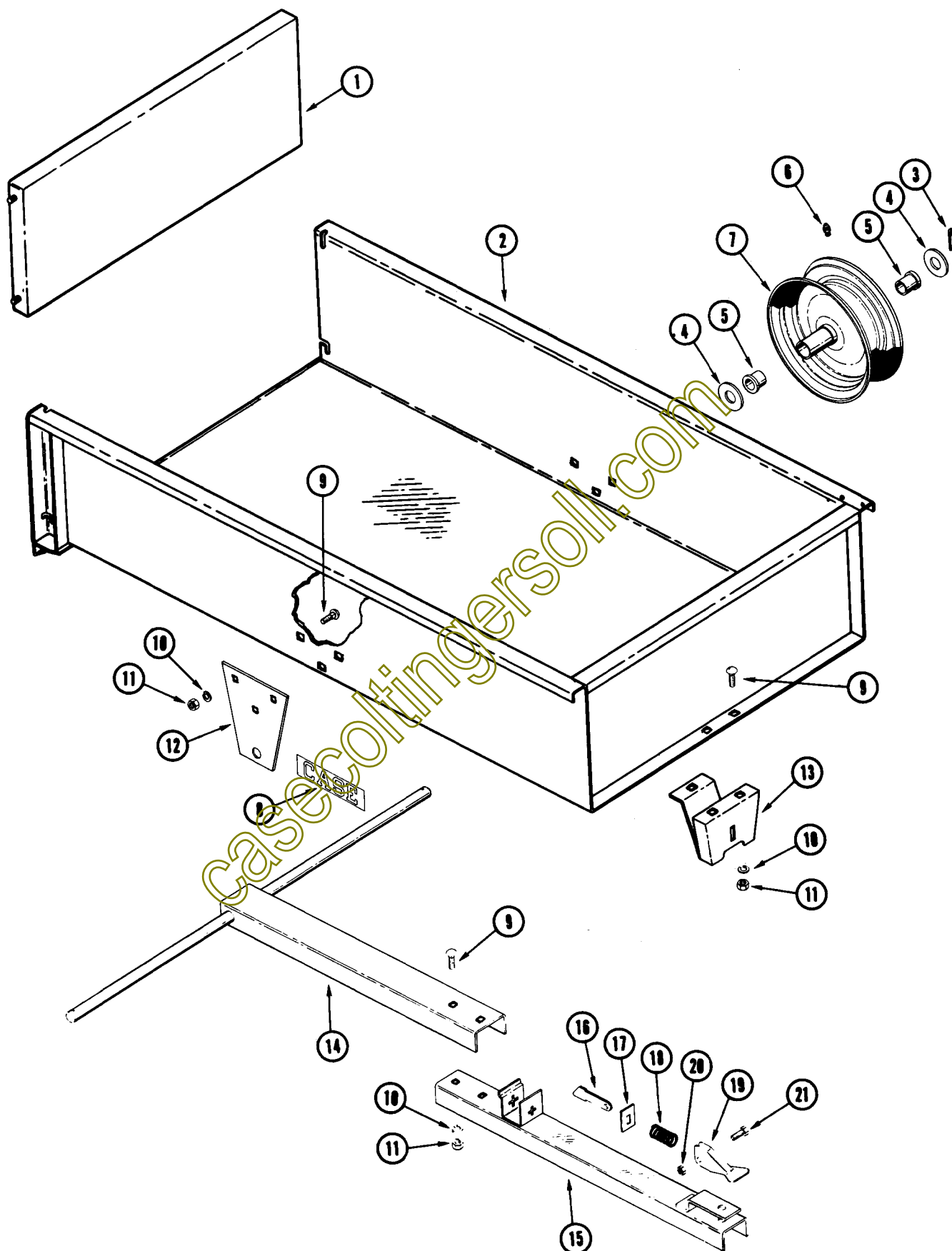
REF.	PART NO.	DESCRIPTION	REQ'D
1	C 10850	FRAME - grader	1
2	C 10820	PIN - clevis - 5/8"	2
3	C 10898	PIN - safety	4
4	C 12887	LINK - grader lift	2
5	C 10821	PIN - clevis - 1/2"	4
6	132- 48	PIN - cotter - 1/8" x 1"	4
7	C 10967	BOLT - 3/8" x 3" hex head	1
8	C 10966	SPRING - extension	1
9	C 10965	PLUG - spring adjustment	1
10	C 10921	SPRING - compression	1
11	C 10896	WASHER - cup	1
12	129- 103	NUT - 3/8"-16 N. C.	1
13	C 10873	WELDMENT - blade pivot	1
14	15- 856	BOLT - 1/2" x 3-1/2" N. C.	1
15	92- 8	WASHER - 1/2" SAE std. lock	1
16	25- 108	NUT - 1/2"-13 N. C.	5
17	141- 56	PIN - clevis - 1/2"	2
18	C 10881	BLADE - 50" grader	1
19	C 11049	BOLT - 3/8" x 10" N. C. ZP	1
20	C 10968	SHOE - grader	2
21	C 10878	BLADE - 50" scraper	1
22	11- 516	BOLT - 5/16" x 1" round head	10
23	92- 5	WASHER - 5/16" SAE std. lock	10
24	25- 105	NUT - 5/16"-18 hex	10
25	C 10888	PIN - locking	1
26	111- 342	BOLT - 3/8" x 1" - round head, square neck	1



MODEL C50 DUMP CART

155 AND 195 GARDEN TRACTORS AND T-90 UTILITY TRANSPORTER

REF. PART NO.	DESCRIPTION	REQ'D
1 186- 218	SCREW - 5/8" No. 5 round head	6
2 C 11436	ANGLE - stiffener	2
3 C 11437	TAIL GATE - wood	1
4 C 10660	BODY - trailer assembly	1
5 132- 93	PIN - cotter 3/16" x 1-1/4"	2
6 A 70063	WHEEL - assembly	2
7 A 70479	RIM - wheel 4 x 8	1
8 A 70398	BUSHING - wheel flanged 3/4"	2
9 219- 1	GREASE FITTING - zerk	1
10 C 10664	BRACKET - axle	2
11 12- 512	BOLT - 5/16" x 3/4" rd. hd., sq. neck	6
12 92- 5	WASHER - 5/16" SAE std. lock	6
13 25- 105	NUT - 5/16" N.C. Hex	6
14 C 10666	TONGUE - rear assembly with axle	1
15 12- 612	BOLT - 3/8" x 3/4" rd. hd., sq. neck	2
16 92- 6	WASHER - 3/8" SAE std. lock	2
17 25- 106	NUT - 3/8" N.C. Hex	3
18 C 10665	TONGUE - front assembly	1
19 C 10661	LEVER - release	1
20 C 10662	KNOB - release lever	1
21 15- 656	BOLT - 3/8" x 3-1/2" hex head	1
22 25- 146	NUT - 3/8" N.C. hex jam	1
23 C 10663	SPRING - release lever	1
24 95- 5	WASHER - 5/16" SAE std. plain	1
25 25- 105	NUT - 5/16" N.C. hex	1
26 25- 145	NUT - 5/16" N.C. hex jam	1



ROTARY MOWER, GRADER BLADE AND DUMP CART 25

MODEL E 50 DUMP CART

155 AND 195 GARDEN TRACTORS AND T-90 UTILITY TRANSPORTER

REF.	PART NO.	DESCRIPTION	REQ'D
1	C 13417	TAILGATE	1
2	C 13416	BODY	1
3	132- 312	PIN - cotter, 3/16" x 1-1/4"	2
4	195- 109	WASHER, 3/4"	4
5	A 70398	BUSHING - 3/4" flanged	4
6	219- 1	FITTING - lube	2
7	A 70479	WHEEL RIM	2
8	321- 429	DECAL - Case.	2
9	111- 215	BOLT - 5/16" x 3/4" Rd. Hd. Sq. Neck Zinc Plated	11
10	192- 20	LOCKWASHER - 5/16" Zinc Plated.	11
11	129- 102	NUT - 5/16" N.C. Hex Zinc Plated	11
12	C 13418	BRACKET - axle mounting	2
13	C 13419	BRACKET - release.	1
14	C 13425	TONGUE - rear assembly w/axle	1
15	C 13421	TONGUE - front	1
16	C 13422	LATCH - release.	1
17	C 13423	GUIDE - release	1
18	C 13420	SPRING - release	1
19	C 13424	LEVER - release.	1
20	131- 351	NUT - lock 5/16"	1
21	113- 103	BOLT - 5/16" x 1" N.C. Hex	1

casecoltingersoil.com

NUMERICAL INDEX

PART NO.	PAGE NO.	REF. NO.	PART NO.	PAGE NO.	REF. NO.	PART NO.	PAGE NO.	REF. NO.
A 70063	23	6	C 10898	13	43	C 12230	15	11
A 70398	23	8	C 10898	15	43	C 12230	17	11
A 70398	25	5	C 10898	17	43	C 12236	11	21
A 70404	11	54	C 10898	19	3	C 12236	13	21
A 70404	13	54	C 10898	21	3	C 12236	15	21
A 70404	15	54	C 10899	5	2	C 12236	17	21
A 70404	17	54	C 10899	7	2	C 12239	11	28
A 70479	23	7	C 10899	9	2	C 12239	13	28
A 70479	25	7	C 10919	13	52	C 12239	15	28
A 70514	9	27	C 10919	15	52	C 12239	17	28
A 70523	5	26	C 10919	17	52	C 12242	11	26
A 70523	9	28	C 10921	19	10	C 12242	13	26
A 70524	5	20	C 10921	21	10	C 12242	15	26
A 70524	7	20	C 10942	5	24	C 12249	11	16
A 70524	9	20	C 10942	7	24	C 12249	13	16
C 10463	11	17	C 10942	9	24	C 12249	15	16
C 10463	13	17	C 10952	11	30	C 12249	17	16
C 10463	15	17	C 10952	13	30	C 12250	11	14
C 10463	17	17	C 10952	15	30	C 12250	13	14
C 10660	23	4	C 10952	17	30	C 12250	15	14
C 10661	23	19	C 10965	19	9	C 12250	17	14
C 10662	23	20	C 10965	21	9	C 12251	11	8
C 10663	23	23	C 10966	19	8	C 12251	13	8
C 10664	23	10	C 10966	21	8	C 12251	15	8
C 10665	23	18	C 10967	19	7	C 12251	17	8
C 10666	23	14	C 10967	21	7	C 12252	11	5
C 10807	5	1	C 10968	19	26	C 12252	13	5
C 10807	7	1	C 10968	21	20	C 12252	15	5
C 10807	9	1	C 11049	19	19	C 12252	17	5
C 10808	5	8	C 11049	21	19	C 12253	11	6
C 10808	7	8	C 11436	23	2	C 12253	13	6
C 10808	9	8	C 11437	23	3	C 12253	15	6
C 10810	5	3	C 11984	11	35	C 12253	17	6
C 10810	7	3	C 11984	13	35	C 12254	11	15
C 10810	9	3	C 11984	15	35	C 12254	13	15
C 10820	19	2	C 11984	17	35	C 12254	15	15
C 10820	21	2	C 11985	11	29	C 12254	17	15
C 10821	11	36	C 11985	13	29	C 12255	11	19
C 10821	13	36	C 11985	15	29	C 12255	13	19
C 10821	15	36	C 11985	17	29	C 12255	15	19
C 10821	17	36	C 11990	7	13	C 12255	17	19
C 10821	19	5	C 11990	9	13	C 12256	11	20
C 10821	21	5	C 11992	7	10	C 12256	13	20
C 10822	5	25	C 11992	9	10	C 12256	15	20
C 10822	7	25	C 12169	13	1	C 12256	17	20
C 10822	9	25	C 12169	15	1	C 12259	11	12
C 10822	11	3	C 12169	17	1	C 12259	13	12
C 10822	13	3	C 12177	5	9	C 12259	15	12
C 10822	15	3	C 12177	7	9	C 12259	17	12
C 10822	17	3	C 12177	9	9	C 12261	5	6
C 10850	19	1	C 12183	11	9	C 12262	7	6
C 10850	21	1	C 12183	13	9	C 12262	9	6
C 10870	19	18	C 12183	15	9	C 12264	11	18
C 10871	19	21	C 12183	17	9	C 12264	13	18
C 10873	19	13	C 12218	11	40	C 12264	15	18
C 10873	21	13	C 12218	13	40	C 12264	17	18
C 10878	21	21	C 12219	11	41	C 12266	9	29
C 10881	21	18	C 12219	13	41	C 12267	11	34
C 10888	19	25	C 12225	11	10	C 12267	13	34
C 10888	21	25	C 12225	13	10	C 12267	15	34
C 10896	19	11	C 12225	15	10	C 12267	17	34
C 10896	21	11	C 12230	11	11	C 12272	5	21
C 10898	11	43	C 12230	13	11	C 12272	7	21

NUMERICAL INDEX

27

PART NO.	PAGE NO.	REF. NO.	PART NO.	PAGE NO.	REF. NO.	PART NO.	PAGE NO.	REF. NO.
C 12272	9	21	C 13416	25	2	111- 317	15	51
C 12278	13	37	C 13417	25	1	111- 317	17	51
C 12278	15	37	C 13418	25	12	111- 342	19	26
C 12278	17	37	C 13419	25	13	111- 342	21	26
C 12279	13	38	C 13420	25	18	111- 362	5	23
C 12279	15	38	C 13421	25	15	111- 362	7	23
C 12279	17	38	C 13422	25	16	111- 362	9	23
C 12281	15	40	C 13423	25	17	111- 362	11	42
C 12282	15	41	C 13424	25	19	111- 362	13	42
C 12283	11	1	C 13425	25	14	111- 362	15	42
C 12307	5	13	C 13594	11	2	111- 362	17	42
C 12309	5	10	C 13594	13	2	113- 102	17B	4
C 12311	5	19	C 13594	15	2	113- 103	25	21
C 12311	7	19	C 13594	17	2	113- 207	17B	11
C 12311	9	19	C 14265	11	57	113- 257	11	23
C 12323	5	11	C 14265	13	57	113- 257	13	23
C 12323	7	11	C 14265	15	57	113- 257	15	23
C 12323	9	11	C 14265	17	57	113- 257	17	23
C 12327	11	44	C 14482	17B	1	113- 258	11	22
C 12327	13	44	C 14731	17B	8	113- 258	13	22
C 12328	15	44	C 14786	17B	9	113- 258	15	22
C 12329	11	46	C 14894	15	48	113- 258	17	22
C 12329	13	46	C 14894	17	48	115- 206	5	7
C 12330	15	46	C 14982	11	48	115- 206	7	7
C 12364	11	37	C 14982	13	48	115- 206	9	7
C 12365	11	38	C 15077	17B	5	126- 19	11	4
C 12513	11	33	HARDWARE CODE NUMBERS			126- 19	13	4
C 12513	13	33	11- 516	19	22	126- 19	15	4
C 12513	15	33	11- 516	21	22	126- 19	17	4
C 12513	17	33	12- 512	23	11	129- 102	25	11
C 12518	5	27	12- 612	23	15	129- 102	17B	2
C 12518	7	26	15- 612	5	4	129- 103	5	18
C 12518	9	26	15- 612	7	4	129- 103	7	18
C 12519	11	53	15- 612	9	4	129- 103	9	18
C 12519	13	53	15- 656	23	21	129- 103	11	25
C 12519	15	53	15- 856	19	14	129- 103	13	25
C 12519	17	53	15- 856	21	14	129- 103	15	25
C 12520	5	16	25- 105	19	24	129- 103	17	25
C 12520	7	16	25- 105	21	24	129- 103	19	12
C 12520	9	16	25- 105	23	13	129- 103	21	12
C 12571	11	47	25- 105	23	25	129- 105	11	56
C 12571	13	47	25- 106	23	17	129- 105	13	56
C 12571	15	47	25- 108	19	16	129- 105	15	56
C 12571	17	47	25- 108	21	16	129- 105	17	56
C 12585	17	40	25- 145	23	26	131- 165	11	45
C 12586	17	41	25- 146	23	22	131- 165	13	45
C 12590	17	10	92- 5	19	23	131- 165	15	45
C 12591	17	26	92- 5	21	23	131- 165	17	45
C 12592	17	44	92- 5	23	12	131- 172	11	7
C 12593	17	46	92- 6	5	5	131- 172	13	7
C 12615	15	2	92- 6	7	5	131- 172	15	7
C 12615	17	2	92- 6	9	5	131- 172	17	7
C 12627	11	52	92- 6	23	16	131- 178	11	50
C 12643	13	48	92- 8	19	15	131- 178	13	50
C 12664	11	55	92- 8	21	15	131- 178	15	50
C 12664	13	55	95- 5	23	24	131- 178	17	50
C 12664	15	55	111- 215	25	9	131- 178	17B	6
C 12664	17	55	111- 317	11	51	131- 351	25	20
C 12887	19	4	111- 317	13	51	132- 48	19	6
C 12887	21	4				132- 48	21	6

NUMERICAL INDEX

PART NO.	PAGE NO.	REF. NO.	PART NO.	PAGE NO.	REF. NO.	PART NO.	PAGE NO.	REF. NO.
132-	93	23	5					
132-	310	5	15					
132-	310	7	15					
132-	310	9	15					
132-	310	11	27					
132-	310	13	27					
132-	310	15	27					
132-	310	17	27					
132-	312	25	3					
138-	2002	11	13					
138-	2002	13	13					
138-	2002	15	13					
138-	2002	17	13					
138-	2008	5	14					
138-	2008	7	14					
138-	2008	9	14					
138-	2033	5	12					
138-	2033	7	12					
138-	2033	9	12					
141-	6	11	31					
141-	6	13	31					
141-	6	15	31					
141-	6	17	31					
141-	56	19	17					
141-	56	21	17					
186-	218	23	1					
187-	1036	11	39					
187-	1036	13	39					
187-	1036	15	39					
187-	1036	17	39					
192-	20	17B	3					
192-	20	25	10					
192-	21	5	17					
192-	21	7	17					
192-	21	9	17					
192-	21	11	24					
192-	21	13	24					
192-	21	15	24					
192-	21	17	24					
195-	108	5	22					
195-	108	7	22					
195-	108	9	22					
195-	109	25	4					
195-	522	11	49					
195-	522	13	49					
195-	522	15	49					
195-	522	17	49					
195-	522	17B	7					
195-	530	11	32					
195-	530	13	32					
195-	530	15	32					
195-	530	17	32					
195-	530	17B	10					
219-	1	23	9					
219-	1	25	6					
321-	429	25	8					

casecollecting.com

Printed In U.S.A.